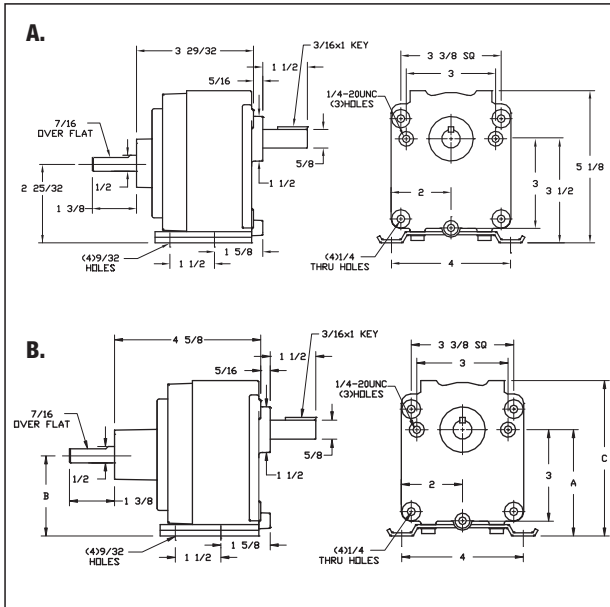
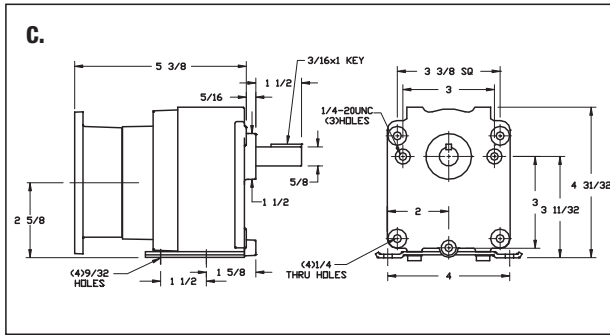




**A. and B.**  
Indirect Drive



**C.**  
42CZ/48C-Face



**Dayton**

**Indirect-Drive and 42CZ/48C-Face Parallel-Shaft Speed Reducers with Base**

- All-position mounting using face, base, and top
- Shipped with heavy-duty SAE 80W-90 oil lubricant in gearcase
- Spring-loaded lip oil seals on input and output shafts

Base allows high or low positioning of output shaft; face-mounting holes on output side of reducer. Heat-treated steel pinion with helical first stage gearing. Heavy-duty needle and ball bearings with thrust balls. Die-cast aluminum gearcase housing.

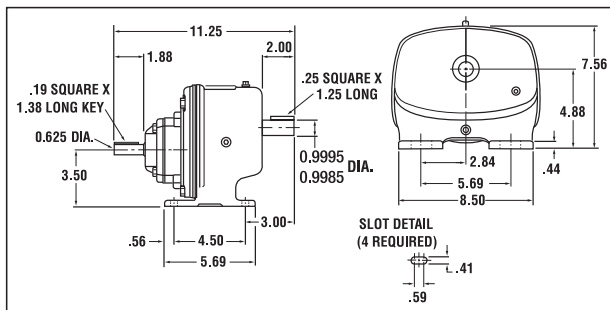
Item No.	Key	Dimensions (in.)		
		A	B	C
47498	B	3.328	2.625	4.953
47499 to 4Z503	B	3.718	3.000	5.344

Key	Nom. Output RPM*	Nom. Ratio	No. of Stages	Max. Input HP	Max. Output Torque	Item No.
<b>Indirect Drive Speed Reducers</b>						
A	15	118.5:1	3	0.05 hp	200.0 in-lb	2Z819
A	33	52.9:1	2	0.1 hp	175.0 in-lb	2Z820
A	72	23.4:1	2	0.1667 hp	100.0 in-lb	2Z821
B	19	92:1	3	0.1 hp	290.0 in-lb	4Z498
B	44	51:1	3	0.1667 hp	260.0 in-lb	4Z499
B	48	38:1	3	0.25 hp	295.0 in-lb	4Z500
B	61	28.1:1	2	0.25 hp	225.0 in-lb	4Z501
B	90	19:1	2	0.3333 hp	225.0 in-lb	4Z502
B	135	13:1	2	0.3333 hp	175.0 in-lb	4Z503
<b>42CZ/48C-Face Speed Reducers†</b>						
C	20	87.8:1	3	0.1 hp	254.0 in-lb	1L515
C	30	58.3:1	3	0.125 hp	278 in-lb	1L537
C	49	35.8:1	3	0.25 hp	295.0 in-lb	1L514
C	62	28.1:1	2	0.25 hp	240.0 in-lb	1L513
C	77	22.7:1	2	0.25 hp	184.0 in-lb	1L512
C	92	19.1:1	2	0.3333 hp	226.0 in-lb	1L511
C	138	12.7:1	2	0.3333 hp	176 in-lb	1L516

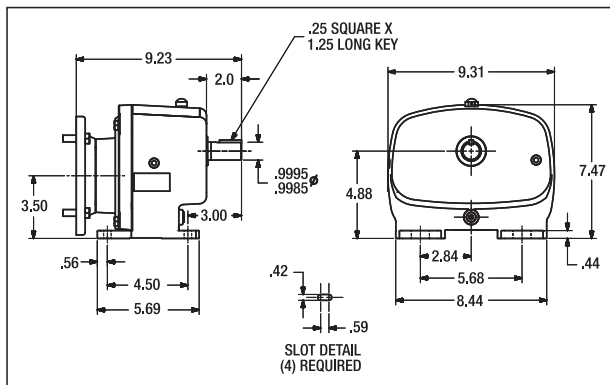
\* @ 1725 rpm. Maximum input speed is 1750 rpm. † C-Face units contain a 0.500" dia. bore with 0.125 x 0.062" keyway.



Indirect-Drive



56C-Face



**Dayton**

**Indirect-Drive and 56C-Face Parallel-Shaft Speed Reducers**

- Horizontal mounting
- Shipped with Klübersynth UH1 6-460 gear oil 34K212
- Spring-loaded double-lip seals on input and output shafts

Hardened steel pinions, helical and spur gears are computer-matched for high efficiency; designed per AGMA standards. Ball bearing-supported input shaft; deep-grooved ball bearing output shaft. Cast-aluminum gearcase.

Nom. Output RPM*	Overhung Load	Nom. Ratio	Max. Input HP	Max. Output Torque	Item No.
<b>Indirect Drive Speed Reducers</b>					
20	1,192 lb	87:1	0.3 hp	998 in-lb	4Z856
30	885 lb	57.5:1	0.5 hp	998 in-lb	4Z857
45	863 lb	38.5:1	0.5 hp	665 in-lb	4Z858
56	712 lb	31:1	0.75 hp	816 in-lb	4Z859
100	773 lb	17.5:1	0.75 hp	454 in-lb	4Z860
140	709 lb	12.5:1	1 hp	427 in-lb	4Z861
<b>56C-Face Speed Reducers</b>					
20	1,192 lb	87:1	0.3 hp	998 in-lb	4Z720
30	885 lb	57.5:1	0.5 hp	998 in-lb	4Z614
45	863 lb	38.5:1	0.5 hp	665 in-lb	4Z615
56	712 lb	31:1	0.75 hp	816 in-lb	4Z616
100	773 lb	17.5:1	0.75 hp	454 in-lb	4Z617
140	709 lb	12.5:1	1 hp	427 in-lb	4Z719

\* @ 1725 rpm.