

## 56C-Face Parallel-Shaft Speed Reducers

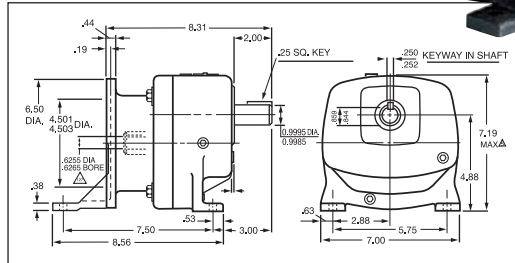


- 660 lb. overhung load
  - Horizontal mounting
  - Shipped with Klübersynth UH1
  - 6-460 gear oil 34K212
  - Spring-loaded double lip seals on input and output shaft
- Precision machined cast-iron housing for accurate alignment of gears. Hardened steel pinions, helical and spur gears are computer-matched for high efficiency; designed per AGMA standards. Input shaft is ball bearing supported. Output shaft has deep-grooved ball bearings.

Nominal Output RPM*	Nom. Ratio	Max. Input HP	Max. Output Torque	Item No.
30	57.5:1	0.5 hp	955 in-lb	<b>2Z932</b>
44	39:1	0.5 hp	651 in-lb	<b>2Z933</b>
60	29:1	0.5 hp	478 in-lb	<b>2Z934</b>
91	19:1	0.5 hp	326.0 in-lb	<b>2Z935</b>

\* @ 1725 rpm.

**2Z932**



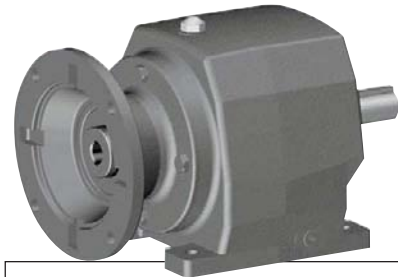
## C-Face Parallel-Shaft Speed Reducers



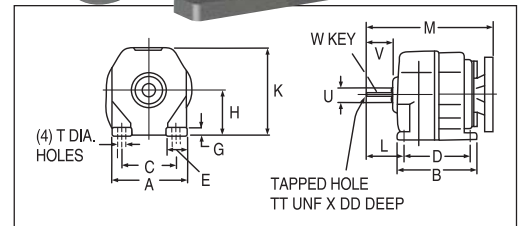
- All-position mounting
  - Shipped with Klübersynth UH1 6-460 gear oil 34K212
- Powdered epoxy paint. Dimensionally interchangeable with SEW Eurodrive inline helical reducers. Ratios up to 71:1 in only 2 stages; increases efficiency and reduces case size.

Nominal Output RPM*	NEMA Frame	Overhung Load	Nom. Ratio	Max. Input HP	Max. Output Torque	Mfr. Model	Item No.
24	56C	1,600 lb	71:1	1 hp	2,303 in-lb	F862B-71K-B5-M1	<b>1F828</b>
	56C	770 lb	71:1	0.5 hp	1,186 in-lb	F842B-71K-B5-M1	<b>1F846</b>
27	140TC/180C	1,360 lb	63:1	1.5 hp	3,027 in-lb	F862B-63K-B7-M1	<b>1F830</b>
	56C	1,360 lb	56:1	1 hp	2,018 in-lb	F862B-56K-B5-M1	<b>1F832</b>
31	56C	770 lb	56:1	0.5 hp	970 in-lb	F842B-56K-B5-M1	<b>1F850</b>
	56C	770 lb	50:1	0.75 hp	1,280 in-lb	F842B-50K-B5-M1	<b>1F852</b>
35	56C	770 lb	50:1	0.75 hp	1,180 in-lb	F842B-45K-B5-M1	<b>1F854</b>
	56C	770 lb	36:1	1 hp	1,254 in-lb	F842B-36K-B5-M1	<b>1F856</b>
48	56C	620 lb	28:1	1 hp	994 in-lb	F842B-28K-B5-M1	<b>1F858</b>
	56C	385 lb	28:1	0.5 hp	491 in-lb	F832B-28K-B5-M1	<b>1F876</b>
62	140TC/180C	620 lb	22:1	1.5 hp	1,158 in-lb	F842B-22K-B7-M1	<b>1F860</b>
	56C	385 lb	22:1	0.75 hp	574 in-lb	F832B-22K-B5-M1	<b>1F878</b>
97	140TC/180C	620 lb	18:1	2 hp	1,192 in-lb	F842B-18K-B7-M1	<b>1F862</b>
	56C	385 lb	18:1	1 hp	483 in-lb	F832B-18K-B5-M1	<b>1F880</b>

\* @ 1725 rpm.



**1F880**



Reducer Model	A	B	C	D	E	Dimensions						TT (UNF)	DD (DEEP)	M				W - Key SQ	Length
F832B	5.44"	4.33"	4.33"	3.35"	1.05"	0.48"	2.95"	5.79"	2.28"	0.75"	1.57"	0.25"	0.63"	9.82"	9.82"	10.65"	—	0.19"	1.28"
F842B	5.71"	6.30"	4.33"	5.12"	1.48"	0.67"	3.54"	6.99"	2.95"	1.00"	1.97"	0.25"	0.63"	10.73"	10.73"	11.55"	—	0.25"	1.75"
F862B	7.48"	7.87"	5.31"	6.50"	2.19"	0.81"	4.53"	9.06"	3.54"	1.25"	2.36"	0.38"	0.87"	12.26"	12.26"	14.61"	14.61"	0.25"	2.00"



## 56C-Face Parallel-Shaft Speed Reducers

Provide the power required for applications in many different industries. Designed with a precision machined die-cast aluminum housing, these reducers can be aligned seamlessly to drive most OEM equipment. Equipped with high quality helical and spur gearing. Factory lubricated for life.

Note: Additional sizes are available on Grainger.com.

Nom. Output RPM*	Overhung Load	Nom. Ratio	No. of Stages	Max. Input HP	Max. Output Torque	Mfr. Model	Item No.
12	1,383 lb	142.9:1	3	0.25 hp	992 in-lb	060-881-2143	<b>35FT53</b>
22	1,165 lb	79:1	3	0.5 hp	1,195 in-lb	060-881-2079	<b>35FT51</b>
60	838 lb	27.8:1	3	1 hp	1,137 in-lb	060-881-2029	<b>35FT45</b>
97	680 lb	17.8:1	2	1.25 hp	902 in-lb	060-881-2018	<b>35FT43</b>
253	506 lb	6.8:1	2	1.5 hp	399.0 in-lb	060-881-2007	<b>35FT39</b>
339	467 lb	5:1	2	1.5 hp	275.0 in-lb	060-881-2005	<b>35FT37</b>
447	425 lb	3.8:1	2	1.5 hp	204.0 in-lb	060-881-2004	<b>35FT35</b>

\* @ 1725 rpm.

**35FT35**

