



## C-Face Right-Angle Hollow-Shaft Speed Reducers

- Interchangeable with Winsmith MDSS models
- Symmetric hollow output shaft for flexibility in mounting
- Filled with Mobil Glygoyle 460 synthetic lubricant

White coating system is scratch resistant and suitable for washdown and outdoor applications. Exceeds ASTM B-117, 1000-hr. salt spray test. Open/close vent. Predrilled and tapped holes on top and bottom for bracket attachment. Lubricant meets NSF requirements and is acceptable for incidental food contact (H1) areas.



3XJCS

| Reducer Model No.      | Worm Center Distance | Item No. | Reducer Model No.          | Worm Center Distance | Driven Shaft O.D. | Driven Shaft Keyway | Item No. |
|------------------------|----------------------|----------|----------------------------|----------------------|-------------------|---------------------|----------|
| <b>Torque Arm Kits</b> |                      |          | <b>Bronze Bushing Kits</b> |                      |                   |                     |          |
| E20MWSS                | 2.0 in               | 3XJF9    | E20MWSS                    | 2.0 in               | 1 1/4 in          | 1/4 x 1/8"          | 3XJF2    |
| E26MWSS                | 2.63 in              | 3XJG1    | E26MWSS                    | 2.63 in              | 1 in              | 1/4 x 1/8"          | 3XJF3    |
| E30MWSS                | 3.0 in               | 3XJG2    | E26MWSS                    | 2.63 in              | 1 1/4 in          | 1/4 x 1/8"          | 3XJF4    |
|                        |                      |          | E30MWSS                    | 3.0 in               | 1 7/16 in         | 3/8 x 3/16"         | 3XJF6    |

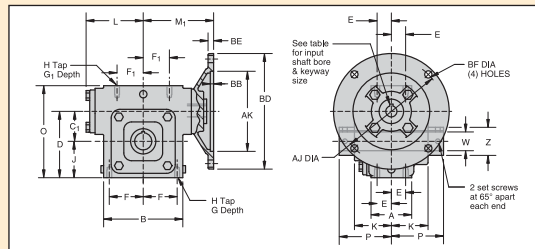
Note: Additional sizes are available on Grainger.com.

| Nom. Output RPM* | NEMA Frame | Worm Center Distance | Overhung Load | Nom. Ratio | Max. Input HP | Max. Output Torque | Mr. Model† | Item No. |
|------------------|------------|----------------------|---------------|------------|---------------|--------------------|------------|----------|
| 29 RPM           | 56C        | 2 in                 | 1,345 lb      | 60:1       | 0.3 hp        | 528 in-lb          | E20MWSS    | 3XJD2    |
|                  | 56C        | 2.63 in              | 1,823 lb      | 60:1       | 0.75 hp       | 1,268 in-lb        | E26MWSS    | 3XJD7    |
|                  | 56C/140TC  | 3 in                 | 2,020 lb      | 60:1       | 1 hp          | 1,766 in-lb        | E30MWSS    | 3XJE5    |
| 35 RPM           | 56C/140TC  | 3.5 in               | 3,186 lb      | 60:1       | 2 hp          | 3,573 in-lb        | E35MWSS    | 3XJF1    |
|                  | 56C/140TC  | 2.63 in              | 1,823 lb      | 50:1       | 1 hp          | 1,481 in-lb        | E26MWSS    | 3XJD6    |
| 43 RPM           | 56C/140TC  | 3 in                 | 2,020 lb      | 50:1       | 1.5 hp        | 2,305 in-lb        | E30MWSS    | 3XJE4    |
|                  | 56C        | 2 in                 | 1,345 lb      | 40:1       | 0.5 hp        | 585 in-lb          | E20MWSS    | 3XJC9    |
| 58 RPM           | 56C/140TC  | 3 in                 | 2,020 lb      | 40:1       | 2 hp          | 2,516 in-lb        | E30MWSS    | 3XJE3    |
|                  | 56C/140TC  | 2.63 in              | 1,823 lb      | 30:1       | 1.5 hp        | 1,427 in-lb        | E26MWSS    | 3XJD4    |
| 86 RPM           | 56C        | 2 in                 | 1,345 lb      | 30:1       | 0.75 hp       | 687 in-lb          | E20MWSS    | 3XJC8    |
|                  | 56C/140TC  | 2 in                 | 1,345 lb      | 20:1       | 1 hp          | 650 in-lb          | E20MWSS    | 3XJC7    |
| 172 RPM          | 56C/140TC  | 2.63 in              | 1,823 lb      | 20:1       | 2 hp          | 1,322 in-lb        | E26MWSS    | 3XJD3    |
|                  | 56C/140TC  | 2 in                 | 1,345 lb      | 10:1       | 2 hp          | 687 in-lb          | E20MWSS    | 3XJC6    |
| 345 RPM          | 180TC      | 3 in                 | 1,175 lb      | 5:1        | 7.5 hp        | 1,301 in-lb        | E30MWSS    | 3XJD8    |
|                  | 56C/140TC  | 2 in                 | 1,265 lb      | 5:1        | 3 hp          | 518 in-lb          | E20MWSS    | 3XJC5    |

\* @ 1725 rpm. † To complete Mr. Model No., add Nominal Ratio and NEMA Frame information.



## Winsmith C-Face Right-Angle Hollow-Shaft Speed Reducer Dimensional Drawings



| Key    | Flange Dimensions |              |            |
|--------|-------------------|--------------|------------|
|        | 56C               | 140TC        | 180TC      |
| AJ     | 5.88"             | 5.88"        | 7.25"      |
| AK     | 4.50"             | 4.50"        | 8.50"      |
| BB     | 0.19"             | 0.19"        | 0.19"      |
| BD     | 6.50"             | 6.50"        | 9.00"      |
| BE     | 0.31"             | 0.31"        | 0.38"      |
| BF     | 0.406"            | 0.406"       | 0.531"     |
| Keyway | 3/16 x 3/32"      | 3/16 x 3/32" | 1/4 x 1/8" |
| Bore*  | 0.6255"           | 0.8755"      | 1.1255"    |

\* Bore tolerances +0.001, -0.000.

| Reducer Model | Worm Center Dist. | Dimensions |       |       |       |       |       |       |         |         |       |       | Output Shaft |       |        |       |       |       |             |
|---------------|-------------------|------------|-------|-------|-------|-------|-------|-------|---------|---------|-------|-------|--------------|-------|--------|-------|-------|-------|-------------|
|               |                   | A          | B     | C1    | D     | E     | F     | F1    | G Depth | H Tap   | J     | L     | M1           | O     | W†     | K     | P     | Z     | Keyway      |
| E20MWSS       | 2.00"             | 2.38"      | 5.25" | 2.00" | 4.13" | 0.88" | 2.19" | 1.69" | 0.63"   | 3/8-16" | 2.13" | 3.44" | 4.06"        | 5.63" | 1.438" | 2.63" | 3.31" | 2.00" | 3/8 x 1/8"  |
| E26MWSS       | 2.63"             | 3.13"      | 5.88" | 2.63" | 5.75" | 1.13" | 2.44" | 2.44" | 0.69"   | 1/2-13" | 3.13" | 4.50" | 5.38"        | 7.88" | 1.688" | 2.81" | 3.50" | 2.50" | 3/8 x 3/16" |
| E30MWSS       | 3.00"             | 3.50"      | 6.62" | 3.00" | 6.50" | 1.31" | 2.75" | 2.75" | 0.75"   | 1/2-13" | 3.50" | 4.63" | 5.56"        | 9.00" | 1.938" | 3.00" | 3.69" | 2.63" | 1/2 x 3/16" |

† Shaft dia. tolerances +0.000, +0.002.



29TL62

## FLEXBLOC C-Face Right-Angle Hollow-Shaft Speed Reducers

- Universal gear housing
- Adaptable to any mounting position
- Filled with food grade synthetic lubricant
- Includes single and double output shafts with standard keys

Motor coupling provides accurate motor shaft alignment, minimizes fretting, and creates a low backlash/high-strength connection.

Fine-grained bronze alloy worm gear and hardened alloy steel worm pinion gear for durability. Oversize output ball bearings provide high radial and axial load capacities and long service life. Double-lip oil seals. Aluminum alloy housing.

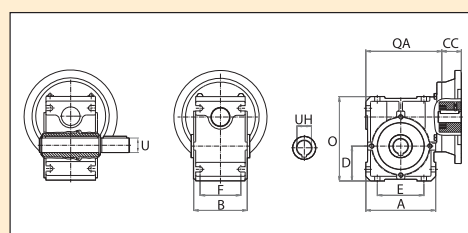
Note: Additional sizes are available on Grainger.com.



| Nom. Output RPM* | NEMA Frame | Worm Center Distance | Overhung Load | Nom. Ratio | Max. Input HP | Max. Output Torque | Mr. Model† | Item No. |
|------------------|------------|----------------------|---------------|------------|---------------|--------------------|------------|----------|
| 18               | 56C        | 1.57 in              | 720 lb        | 100:1      | 0.25 hp       | 301.0 in-lb        | SK1S140Y   | 29TL62   |
|                  | 56C        | 1.97 in              | 1,080 lb      | 100:1      | 0.37 hp       | 549 in-lb          | SK1S150Y   | 29TL63   |
|                  | 56C        | 2.48 in              | 1,415 lb      | 100:1      | 0.63 hp       | 974 in-lb          | SK1S163Y   | 29TL64   |
|                  | 56C        | 1.57 in              | 720 lb        | 80:1       | 0.25 hp       | 327.0 in-lb        | SK1S150Y   | 29TL67   |
| 22               | 56C        | 1.97 in              | 1,080 lb      | 80:1       | 0.44 hp       | 593 in-lb          | SK1S150Y   | 29TL68   |
|                  | 56C        | 2.48 in              | 1,415 lb      | 80:1       | 0.75 hp       | 1,044 in-lb        | SK1S163Y   | 29TL69   |
|                  | 56C        | 2.95 in              | 2,250 lb      | 80:1       | 1.06 hp       | 1,779 in-lb        | SK1S175Y   | 29TL70   |
|                  | 56C        | 1.22 in              | 405 lb        | 60:1       | 0.25 hp       | 212.0 in-lb        | SK1S131Y   | 29TL71   |
| 29               | 56C        | 1.57 in              | 720 lb        | 60:1       | 0.37 hp       | 354.0 in-lb        | SK1S140Y   | 29TL72   |
|                  | 56C        | 1.97 in              | 1,080 lb      | 60:1       | 0.5 hp        | 646 in-lb          | SK1S150Y   | 29TL73   |
|                  | 56C        | 2.48 in              | 1,415 lb      | 60:1       | 0.88 hp       | 1,150 in-lb        | SK1S163Y   | 29TL74   |
|                  | 56C        | 2.95 in              | 2,250 lb      | 60:1       | 1.37 hp       | 1,956 in-lb        | SK1S175Y   | 29TL75   |

\* @ 1750 rpm. † To complete Mr. Model include NEMA Frame and Nominal Ratio values.

## Nord FLEXBLOC C-Face Right-Angle Hollow-Shaft Speed Reducer Dimensional Drawings



| Reducer Model | Worm Center Distance | Dimensions |       |       |       |       |       |       |        |         |       | Motor Frame Dimensions CC |  |
|---------------|----------------------|------------|-------|-------|-------|-------|-------|-------|--------|---------|-------|---------------------------|--|
|               |                      | A          | B     | D     | E     | F     | O     | QA    | U      | UH      | 56C   | 140TC                     |  |
| SK1S131       | 1.22"                | 3.15"      | 2.48" | 1.57" | 2.13" | 1.73" | 3.82" | 3.82" | 0.625" | 0.6250" | 1.89" |                           |  |
| SK1S140       | 1.57"                | 3.94"      | 3.07" | 1.97" | 2.76" | 2.36" | 4.78" | 4.69" | 0.750" | 1.0000" | 1.46" | 1.93"                     |  |
| SK1S150       | 1.97"                | 4.72"      | 3.62" | 2.36" | 3.15" | 2.76" | 5.67" | 5.16" | 1.000" | 1.1250" | 1.46" | 1.93"                     |  |
| SK1S163       | 2.48"                | 5.67"      | 4.41" | 2.83" | 3.94" | 3.35" | 6.85" | 6.22" | 1.125" | 1.4375" | 1.46" | 1.93"                     |  |
| SK1S175       | 2.95"                | 6.77"      | 5.12" | 3.39" | 4.72" | 3.54" | 8.08" | 7.87" | 1.375" | 1.9375" | 1.61" | 1.61"                     |  |

