



1L295



C-Face Right-Angle Speed Reducers and Bases

- Left output shaft
- All-position mounting (mounting bases sold separately)
- Shipped without oil, use 34K212 (sold separately on Grainger.com)

Heavy-duty worm gear speed reducers with long-life seals have value-engineered features for flexible installation and simplified maintenance. Integral input worm and shaft of case-hardened alloy steel. Oversize ball and roller bearings for maximum performance. Fine-grain cast-iron housing.

Note: Models with stainless steel housing are available on Grainger.com.

Nominal Output RPM*	NEMA Frame	Worm Center Distance	Nom. Ratio	Max. Input HP	Max. Output Torque	Mfr. Model	Item No.
29	56C	1.75 in	60:1	0.3 hp	440 in-lb	F718-60-B5-G	1L295
	56C	2.06 in	60:1	0.5 hp	670 in-lb	F721-60-B5-G	1L324
	56C	2.38 in	60:1	0.5 hp	670 in-lb	F724-60-B5-G	1L329
	56C	2.62 in	60:1	0.75 hp	1,004 in-lb	F726-60-B5-G	1L370
	140TC/180C	3.75 in	60:1	2 hp	2,678 in-lb	F738-60E-B7-G	1L869
	180TC/210C	5.15 in	60:1	5 hp	7,392 in-lb	RF752-60E-B9-G	1L878
35	42CZ	1.0 in	50:1	0.16 hp	120.0 in-lb	F710-50-B4-G	1L237
	56C	1.0 in	50:1	0.16 hp	120.0 in-lb	F710-50-B5-G	1L251
	56C	1.33 in	50:1	0.16 hp	205.0 in-lb	F713-50-B5-G	1L269
	56C	1.54 in	50:1	0.25 hp	315.0 in-lb	F715-50-B5-G	1L282
	56C	1.75 in	50:1	0.3 hp	420 in-lb	F718-50-B5-G	1L296
	56C	2.06 in	50:1	0.5 hp	630 in-lb	F721-50-B5-G	1L325
56C	2.62 in	50:1	1 hp	1,260 in-lb	F726-50-B5-G	1L363	
56C	3.25 in	50:1	2 hp	2,520 in-lb	F732-50E-B5-G	1L858	

Nominal Output RPM*	NEMA Frame	Worm Center Distance	Nom. Ratio	Max. Input HP	Max. Output Torque	Mfr. Model	Item No.
44	42CZ	1.0 in	40:1	0.16 hp	128.0 in-lb	F710-40-B4-G	1L238
	56C	1.0 in	40:1	0.16 hp	128.0 in-lb	F710-40-B5-G	1L252
	56C	1.33 in	40:1	0.16 hp	178.0 in-lb	F713-40-B5-G	1L270
	56C	1.54 in	40:1	0.3 hp	355.0 in-lb	F715-40-B5-G	1L283
	56C	1.75 in	40:1	0.3 hp	355.0 in-lb	F718-40-B5-G	1L297
	56C	2.06 in	40:1	0.5 hp	533 in-lb	F721-40-B5-G	1L326
	56C	2.38 in	40:1	1 hp	1,066 in-lb	F724-40-B5-G	1L331
	56C	2.62 in	40:1	1 hp	1,066 in-lb	F726-40-B5-G	1L364
	140TC/180C	3.25 in	40:1	2 hp	2,131 in-lb	F732-40E-B7-G	1L857
	42CZ	1.0 in	30:1	0.16 hp	139.0 in-lb	F710-30-B4-G	1L239
	56C	1.33 in	30:1	0.25 hp	208.0 in-lb	F713-30-B5-G	1L271
	56C	1.54 in	30:1	0.3 hp	277.0 in-lb	F715-30-B5-G	1L284
56C	1.75 in	30:1	0.5 hp	416 in-lb	F718-30-B5-G	1L298	
56C	2.06 in	30:1	0.75 hp	624 in-lb	F721-30-B5-G	1L327	
56C	2.38 in	30:1	1 hp	832 in-lb	F724-30-B5-G	1L332	
56C	2.62 in	30:1	1.5 hp	1,247 in-lb	F726-30-B5-G	1L366	
140TC/180C	2.62 in	30:1	1.5 hp	1,247 in-lb	F726-30-B7-G	1L365	
56C	1.33 in	25:1	0.3 hp	234.0 in-lb	F713-25-B5-G	1L272	
56C	1.54 in	25:1	0.5 hp	350.0 in-lb	F715-25-B5-G	1L285	
56C	1.75 in	25:1	0.5 hp	350.0 in-lb	F718-25-B5-G	1L299	
56C	2.06 in	25:1	1 hp	702 in-lb	F721-25-B5-G	1L328	
56C	2.38 in	25:1	1.5 hp	1,056 in-lb	F724-25-B5-G	1L333	
140TC/180C	2.38 in	25:1	1.5 hp	1,056 in-lb	F724-25-B7-G	1L349	
42CZ	1.0 in	20:1	0.25 hp	130.0 in-lb	F710-20-B4-G	1L240	
56C	1.0 in	20:1	0.25 hp	130.0 in-lb	F710-20-B5-G	1L254	
56C	1.33 in	20:1	0.5	308 in-lb	F713-20-B5-G	1L273	
56C	1.54 in	20:1	0.5 hp	295.0 in-lb	F715-20-B5-G	1L286	
56C	1.75 in	20:1	0.75 hp	443 in-lb	F718-20-B5-G	1L300	
56C	2.06 in	20:1	1 hp	590 in-lb	F721-20-B5-G	1L318	

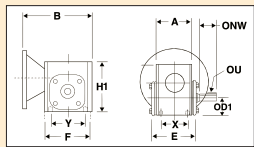
* @ 1750 rpm.

Reducer Model	Worm Center Distance	Base Mounting Hole Pattern Width	Base Mounting Hole Pattern Length	Base Width	Base Length	Item No.
Cast Iron Mounting Bases						
710	1.0 in		3.75 in	3.69 in	4.63 in	4NY17
713	1.33 in		4.38 in	4.19 in	5.38 in	4YA78
715	1.54 in		4.31 in	5.25 in	6.44 in	4YA79
718	1.75 in		4.5 in	5.75 in	7.0 in	4YA80
721	2.06 in		4.69 in	6.38 in	7.75 in	4YA81
724	2.38 in		4.88 in	7.06 in	8.5 in	4YA82
726	2.62 in		5.25 in	8.0 in	9.63 in	4YA83



Boston Gear C-Face Right-Angle Speed Reducer Dimensional Drawings

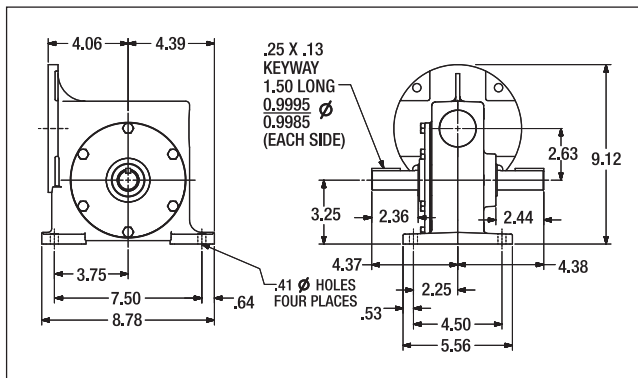
Right- and left-hand shafts are determined while facing reducer C-Face input.



Reducer Model	Worm Center Distance	Overhung Load	Speed Reducer Dimensions												Output Shaft				
			A	42CZ	56C	180TC	210TC	250TC	E	F	H1	X	Y	Tap Size	Depth	OD1	OU	ONW	Keyway
710	1.00"	150 lb.	2.50"	4.78"	5.56"	—	—	3.34"	3.25"	3.63"	1.69"	2.63"	1/4-20"	0.44"	1.31"	0.500"	1.19"	1/8 x 3/8"	
713	1.33"	200 lb.	2.88"	—	6.06"	—	—	4.30"	4.25"	4.64"	2.00"	3.25"	3/8-18"	0.50"	1.72"	0.625"	2.00"	3/8 x 1"	
715	1.54"	300 lb.	3.69"	—	7.06"	—	—	5.06"	5.13"	5.38"	2.75"	4.19"	3/8-18"	0.50"	1.91"	0.750"	1.78"	3/8 x 1"	
718	1.75"	600 lb.	3.69"	—	7.44"	—	—	5.03"	5.50"	5.75"	2.75"	4.19"	3/8-18"	0.50"	2.06"	0.875"	1.78"	3/8 x 1"	
721	2.06"	700 lb.	3.81"	—	8.06"	—	—	5.19"	6.00"	6.38"	2.88"	5.00"	3/8-16"	0.56"	2.28"	1.000"	2.09"	1/4 x 1 1/4"	
724	2.38"	900 lb.	4.06"	—	8.44"	8.88"	—	5.43"	6.38"	6.94"	2.88"	5.00"	3/8-16"	0.56"	2.50"	1.125"	2.38"	1/4 x 1 1/4"	
726	2.62"	1000 lb.	4.44"	—	9.44"	9.88"	—	5.90"	7.38"	8.00"	3.38"	6.38"	3/8-16"	0.56"	2.94"	1.125"	2.63"	1/4 x 1 1/4"	
732	3.25"	1300 lb.	5.88"	—	11.06"	11.50"	—	7.56"	9.00"	9.38"	4.00"	7.50"	1/2-14"	0.66"	3.50"	1.375"	3.25"	3/8 x 2 1/8"	
738	3.75"	2000 lb.	6.38"	—	12.06"	12.50"	—	8.38"	10.00"	10.44"	4.75"	8.50"	1/2-13"	0.81"	3.88"	1.625"	3.50"	3/8 x 2 1/4"	
752	5.16"	2200 lb.	7.38"	—	—	—	—	22.56"	9.65"	13.13"	13.75"	5.81"	11.00"	3/8-11"	1.00"	5.31"	2.000"	4.16"	1/2 x 2 1/8"



2Z154



C-Face Right-Angle Speed Reducers

- 29 to 173 output rpm, continuous duty
- Double-output shaft
- Horizontal floor or ceiling mount
- 2.63" worm center distance
- Shipped with Klübersynth UH1 6-460 gear oil 34K212
- Ball bearings

For use with 1/4 to 3/4 HP, NEMA 56C, 1725 rpm motors. Case-hardened, ball bearing-supported worm. High-strength bronze, tapered roller bearing-supported output gear. Cast-iron housing.

Nominal Output RPM*	Overhung Load	Nom. Ratio	Max. Input HP	Max. Output Torque	Item No.
29	1,117 lb	60:1	0.5 hp	537 in-lb	62128
35	986 lb	50:1	0.5 hp	498 in-lb	22151
43	870 lb	40:1	0.5 hp	431 in-lb	62129
69	679 lb	25:1	0.75 hp	492 in-lb	22152
86	629 lb	20:1	0.75 hp	422 in-lb	22153
138	487 lb	12.5:1	0.75 hp	292.0 in-lb	22154
173	432 lb	10:1	0.75 hp	226.0 in-lb	22936

* @ 1725 rpm.

CAD DRAWINGS Available Online

Grainger's CAD capability lets you download 2D drawings and 3D CAD files in your choice of format.

> CAD available on select products. Go to Grainger.com

