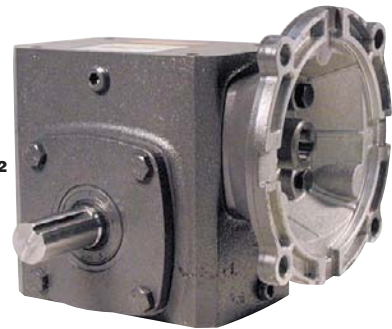


Nom. Output RPM*	NEMA Frame	Worm Center Distance	Nom. Ratio	Max. Input HP	Max. Output Torque	SHAFT OUTPUT ASSEMBLY		
						Left Item No.	Right Item No.	Double Output Item No.
29	56C	1.33 in	60:1	0.25 hp	309.0 in-lb	4Z284	4RN71	4Z001
	56C	1.54 in	60:1	0.25 hp	280.0 in-lb	4RN80	4RN88	4RN96
	56C	1.75 in	60:1	0.3 hp	415 in-lb	4Z292	3GD39	4RP05
	56C	2.06 in	60:1	0.5 hp	636 in-lb	4Z300	4RP13	4Z008
	56C	2.37 in	60:1	0.5 hp	663 in-lb	4RP21	4RP28	4RP35
	56C	2.62 in	60:1	0.75 hp	1,021 in-lb	4Z730	3GD47	4RP42
	56C	3.0 in	60:1	0.75 hp	1,034 in-lb	4RP50	4RP58	4RP66
	56C	3.25 in	60:1	1 hp	1,371 in-lb	3GD55	4RP74	4Z015
	56C	1.33 in	50:1	0.25 hp	225.0 in-lb	4Z285	4RN72	4RN79
	56C	1.54 in	50:1	0.25 hp	267.0 in-lb	4RN81	4RN89	4RN97
35	56C	1.75 in	50:1	0.5 hp	449 in-lb	4Z293	3GD40	4RP06
	56C	2.06 in	50:1	0.5 hp	581 in-lb	4Z301	4RP14	—
	56C	2.37 in	50:1	0.5 hp	582 in-lb	4RP22	4RP29	4RP36
	56C	2.62 in	50:1	0.75 hp	895 in-lb	4Z731	3GD48	4RP43
	56C	3.0 in	50:1	1 hp	1,233 in-lb	4RP51	4RP59	4RP67
	56C	3.25 in	50:1	1.5 hp	1,857 in-lb	3GD56	4RP75	6Z130
	56C	1.33 in	40:1	0.25 hp	220.0 in-lb	4Z286	4RN73	4Z002
	56C	1.54 in	40:1	0.3 hp	310.0 in-lb	4RN82	4RN90	4RN98
	56C	1.75 in	40:1	0.5 hp	477 in-lb	4Z294	3GD41	4RP07
	56C	2.06 in	40:1	0.5 hp	492 in-lb	4Z302	4RP15	4Z009
44	56C	2.37 in	40:1	0.75 hp	758 in-lb	4RP23	4RP30	4RP37
	56C	2.62 in	40:1	1 hp	1,028 in-lb	4Z732	3GD49	4RP44
	56C	3.0 in	40:1	1 hp	1,011 in-lb	4RP52	4RP60	4RP68
	56C	3.25 in	40:1	1.5 hp	1,563 in-lb	3GD57	4RP76	4Z016
	56C	1.33 in	30:1	0.3 hp	233.0 in-lb	4Z287	4RN74	4Z003
	56C	1.54 in	30:1	0.3 hp	248.0 in-lb	4RN83	4RN91	4RN99
	56C	1.75 in	30:1	0.5 hp	401 in-lb	4Z295	3GD42	4RP08
	56C	2.06 in	30:1	0.75 hp	610 in-lb	4Z303	4RP16	4Z010
	56C	2.37 in	30:1	1 hp	809 in-lb	4RP24	4RP31	4RP38
	56C	2.62 in	30:1	1.5 hp	983 in-lb	4Z733	3GD50	4RP45
58	56C	3.0 in	30:1	1.5 hp	1,245 in-lb	4RP53	4RP61	4RP69
	56C	3.25 in	30:1	2 hp	1,689 in-lb	3GD58	4RP77	4Z017
	56C	1.33 in	20:1	0.5 hp	212.0 in-lb	4Z288	4RN75	4Z004
	56C	1.54 in	20:1	0.5 hp	280.0 in-lb	4RN84	4RN92	4RP01
	56C	1.75 in	20:1	0.75 hp	436 in-lb	4Z296	3GD43	4RP09
	56C	2.06 in	20:1	1 hp	586 in-lb	4Z304	4RP17	4Z011
	56C	2.37 in	20:1	1.5 hp	892 in-lb	4RP25	4RP32	4RP39
	56C	2.62 in	20:1	1.5 hp	891 in-lb	4Z734	3GD51	4RP46
	140TC/180C	3.0 in	20:1	2 hp	1,204 in-lb	4RP54	4RP62	4RP70
	180TC/210C	3.25 in	20:1	3 hp	1,816 in-lb	3GD59	4RP78	4Z018
88	56C	1.33 in	15:1	0.5 hp	203.0 in-lb	4Z289	4RN76	4Z005
	56C	1.54 in	15:1	0.5 hp	218.0 in-lb	4RN85	4RN93	4RP02
	56C	1.75 in	15:1	1 hp	430 in-lb	4Z297	3GD44	4RP10
	56C	2.06 in	15:1	1.5 hp	614 in-lb	4Z305	4RP18	4Z012
	56C	2.37 in	15:1	1.5 hp	686 in-lb	4RP26	4RP33	4RP40
	56C	2.62 in	15:1	2 hp	925 in-lb	4Z735	3GD52	4RP47
	140TC/180C	3.0 in	15:1	3 hp	1,405 in-lb	4RP55	4RP63	4RP71
	180TC/210C	3.25 in	15:1	3 hp	1,407 in-lb	3GD60	4RP79	4Z019
	56C	1.33 in	10:1	0.75 hp	182.0 in-lb	4Z290	4RN77	4Z006
	56C	1.54 in	10:1	0.75 hp	233.0 in-lb	4RN86	4RN94	4RP03
117	56C	1.75 in	10:1	1.5 hp	407 in-lb	4Z298	3GD45	4RP11
	56C	2.06 in	10:1	2 hp	554 in-lb	4Z306	4RP19	4Z013
	56C	2.37 in	10:1	2 hp	651 in-lb	4RP27	4RP34	4RP41
	56C	2.62 in	10:1	3 hp	972 in-lb	4Z736	3GD53	4RP48
	180TC/210C	3.0 in	10:1	3 hp	970 in-lb	4RP56	4RP64	4RP72
	180TC/210C	3.25 in	10:1	5 hp	1,629 in-lb	3GD61	4RP80	4Z020

\* @ 1750 rpm.



Left Shaft Assembly 4Z292



## C-Face Right-Angle Speed Reducers and Bases

- 29 to 350 rpm, continuous duty
- All-position mounting with optional bases, except input motor shaft up
- Shipped with Klübersynth UH1 6-460 gear oil 34K212
- Double-lipped and spring-loaded shaft seals; large oil sump

Interchangeable with most Grove (Flexaline) and Ohio (Uniline) reducers. Thread-rolled and hardened alloy steel worm for higher strength and lower power loss; forged bronze and hardened worm gear. Ball bearings on input shaft, tapered roller bearings on output shaft. Cast-iron housing. For low-speed/high-torque applications when coupled to a NEMA 56C-Face, 1750-rpm motor (not included).

Nom. Output RPM*	NEMA Frame	Worm Center Distance	Nom. Ratio	Max. Input HP	Max. Output Torque	SHAFT OUTPUT ASSEMBLY		
						Left Item No.	Right Item No.	Double Output Item No.
350	56C	1.33 in	5:1	1 hp	163.0 in-lb	4Z291	4RN78	4Z007
	56C	1.54 in	5:1	1 hp	163.0 in-lb	4RN87	4RN95	4RP04
	56C	1.75 in	5:1	2 hp	276.0 in-lb	4Z299	3GD46	4RP12
	56C	2.06 in	5:1	2 hp	329.0 in-lb	4Z307	4RP20	4Z014
	56C	2.62 in	5:1	3 hp	496 in-lb	4Z737	3GD54	4RP49
180TC/210C	3.0 in	5:1	5 hp	834 in-lb	4RP57	4RP65	4RP73	
210TC/250UC	3.25 in	5:1	7.5 hp	1,260 in-lb	3GD62	4RP61	4Z021	

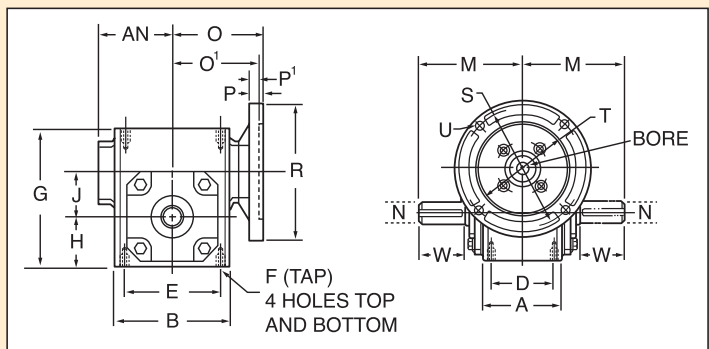
Worm Center Distance	Bolt Hole Dia.	SHAFT OUTPUT ASSEMBLY	
		HORIZONTAL Item No.	VERTICAL Item No.
1.33 in	0.34 in	6X499	6X502
1.54 in	0.41 in	4RN65	4RN68
1.75 in	0.41 in	6X093	6X094
2.06 in	0.47 in	6X500	6X503
2.37 in	0.47 in	4RN66	4RN69
2.62 in	0.53 in	1A507	1A508
3 in	0.53 in	4RN67	4RN70
3.25 in	0.53 in	6X501	6X504



## Dayton C-Face Right-Angle Speed Reducer Dimensional Drawings

Right- and left-hand shafts are determined while facing reducer C-Face input.

Motor Frame No.	Dimensions					Input Shaft	
	P	P1	R	S	T	U	Keyway
56C	0.44"	N"	6.62"	5.88"	4.5"	0.41"	0.625" x 0.188 x 1.38"
140TC	0.44"	N"	6.62"	5.88"	4.5"	0.41"	0.875" x 0.188 x 1.38"
180TC	N"	0.56"	9.26"	7.25"	8.5"	0.53"	1.125" x 0.250 x 1.13"
210TC	N"	0.56"	9.00"	7.25"	8.5"	0.53"	1.375" x 0.313 x 1.38"



Worm Center Distance	Overhung Load	Dimensions										Output Shaft W	Keyway	56C/140TC O	182TC/184TC 213TC/215TC O1	
		A	B	D	E	F	G	H	J	AN	M					N
1.33"	275"	3.50"	4.25"	3.00"	3.00"	1/4-20"	4.94"	1.75"	1.33"	2.13"	4.38"	0.625"	2.00"	0.188 x 1.25"	3.94	—
1.54"	388"	3.69"	5.13"	2.75"	4.19"	5/8-18"	5.38"	1.91"	1.54"	2.56"	4.31"	0.750"	1.78"	0.188 x 1.14"	4.50	—
1.75"	700"	3.69"	5.50"	2.75"	4.19"	5/8-18"	5.75"	2.06"	1.75"	2.75"	4.31"	0.875"	1.78"	0.188 x 1.14"	4.69	—
2.06"	875"	3.81"	6.00"	3.00"	4.75"	5/8-18"	6.38"	2.28"	2.06"	3.00"	4.69"	1.000"	2.09"	0.250 x 1.32"	5.06	—
2.37"	845"	4.06"	6.38"	2.88"	5.00"	3/8-16"	6.94"	2.50"	2.37"	3.19"	5.08"	1.125"	2.37"	0.250 x 1.64"	5.25	—
2.62"	1300"	4.44"	7.38"	3.38"	6.38"	3/8-16"	8.00"	2.94"	2.63"	3.69"	5.63"	1.250"	2.63"	0.250 x 1.93"	5.75	—
3.00"	967"	5.25"	8.12"	4.00"	7.00"	7/8-14"	8.88"	3.25"	3.00"	4.06"	6.75"	1.250"	3.25"	0.250 x 2.31"	6.20	—
3.25"	1500"	5.88"	9.00"	4.00"	7.50"	7/8-14"	9.38"	3.50"	3.25"	5.03"	7.06"	1.500"	3.25"	0.375 x 2.50"	6.56	7.00