



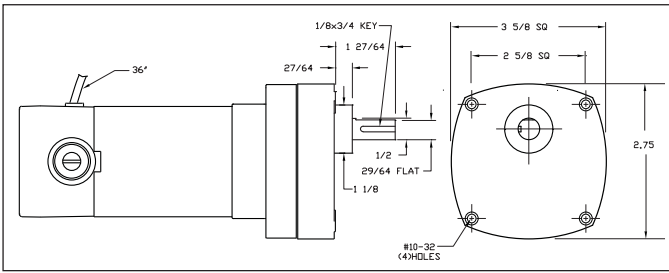
Dayton



6Z913

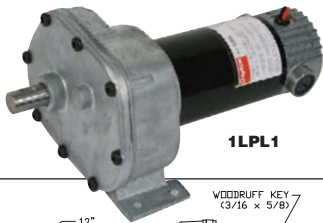
90VDC Permanent-Magnet Parallel-Shaft Gearmotors

- Enclosure: totally enclosed nonventilated
- Gearcase: die-cast aluminum
- Lubrication: permanent heavy fluid gear oil
- Gears: 1st stage steel, helical; subsequent stages steel or heat-treated powdered metal spur
- Bearings: needle on case output shaft; ball on motor
- Mounting: all-position; for optional base mounting bracket 2A754, available on Grainger.com®
- Rotation: reversible
- Brushes: externally replaceable
- Ambient: 40°C
- Seals: spring-loaded lip-type on input and output shaft
- Accept direct motor-mount speed control 2PUX3 (sold separately on Grainger.com)
- Accept pulse generator 6Z392 or 5JJ65 (sold separately on Grainger.com)

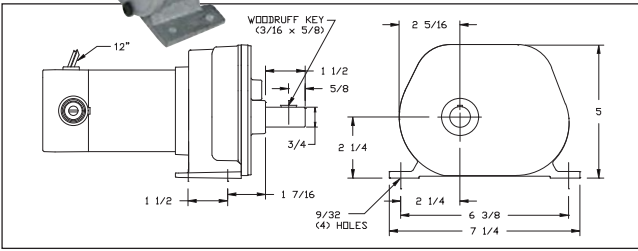


Nameplate RPM	Max. Torque	Overhung Load	Input HP	Gear Ratio	Full Load Amps	Length Less Shaft	Item No.	REPLACEMENT MOTOR BRUSH SETS
2.6 RPM	100 in-lb	90 lb	1/40	702:1	0.36 A	7 3/8 in	6Z910	6VHY3
5 RPM	100 in-lb	90 lb	1/40	362:1	0.36 A	7 3/8 in	6Z911	6VHY3
9.6 RPM	160 in-lb	115 lb	1/20	362:1	0.26 A	8 in	2H569 *	6VHY3
19 RPM	100 in-lb	90 lb	1/40	186:1	0.36 A	7 3/8 in	6Z912	6VHY3
20 RPM	150 in-lb	150 lb	1/20	96:1	0.58 A	7 3/8 in	2H567 *	6VHY3
37 RPM	100 in-lb	90 lb	1/40	96:1	0.62 A	7 1/2 in	6Z913	6VHY3
71 RPM	74 in-lb	90 lb	1/20	49:1	0.62 A	7 1/2 in	6Z914	6VHY3
139 RPM	150 in-lb	130 lb	1/10	49:1	1.08 A	8 3/4 in	2H565	6VHY6
	40 in-lb	90 lb	1/20	25:1	0.62 A	7 1/2 in	6Z915	6VHY3
	83 in-lb	230 lb	1/10	25:1	1.08 A	8 3/4 in	2H563	6VHY6
	20 in-lb	90 lb	1/20	13:1	0.62 A	7 1/2 in	6Z916	6VHY3
	42 in-lb	220 lb	1/10	13:1	1.08 A	8 3/4 in	2H561	6VHY6

* Gear limited.



1LPL1



90VDC Permanent-Magnet Parallel-Shaft Gearmotors

Dayton

- Enclosure: totally enclosed nonventilated
- Gearcase: die-cast zinc
- Lubrication: grease-filled
- Gears: phenolic and hardened steel
- Bearings: porous
- Mounting: all-position
- Rotation: reversible
- Brushes: externally replaceable
- Ambient: 40°C
- Seals: O-ring type on output
- Accept direct motor-mount speed control 2PUX3 (sold separately on Grainger.com)

Nameplate RPM	Max. Torque	Overhung Load	Input HP	Gear Ratio	Full Load Amps	Length Less Shaft	Item No.
6.5 RPM	500 in-lb	250 lb	1/5	267:1	0.84 A	8 1/2 in	1LPL1
13 RPM	250 in-lb	250 lb	1/5	135:1	0.84 A	8 1/2 in	1LPK8
21 RPM	150 in-lb	250 lb	1/5	81:1	0.84 A	8 1/2 in	1LPK5
46 RPM	75 in-lb	250 lb	1/5	38:1	0.84 A	8 1/2 in	1LPK6

Replacement Motor Brush Set
Motor Brush Set **6YHY6**



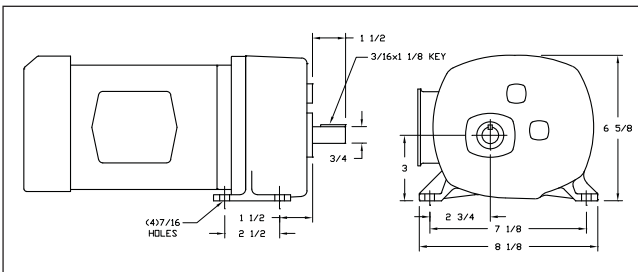
6Z406

90VDC Permanent-Magnet Parallel-Shaft Gearmotors

Dayton

- Gearcase: die-cast aluminum
- Lubrication: permanent, heavy fluid gear oil
- Gears: hardened steel; 1st stage helical, subsequent stages spur
- Bearings: heavy-duty ball and thrust balls on case, ball on motor
- Mounting: all-position
- Rotation: reversible
- Brushes: externally replaceable
- Ambient: 40°C
- Seals: lip-type on input and output shafts

Nameplate RPM	Max. Torque	Overhung Load	Input HP	Gear Ratio	Full Load Amps	Length Less Shaft	Item No.
9 RPM	1,087 in-lb	325 lb	1/4	196:1	2.0 A	11 3/4 in	6Z406
14 RPM	960 in-lb	325 lb	1/4	131:1	2.6 A	11 3/4 in	6Z407
20 RPM	727 in-lb	325 lb	1/4	87:1	2.7 A	11 3/4 in	6Z408
43 RPM	353 in-lb	325 lb	1/4	41:1	2.7 A	11 3/4 in	6Z409
63 RPM	238 in-lb	325 lb	1/4	28:1	2.7 A	11 3/4 in	6Z410
91 RPM	152 in-lb	325 lb	1/4	19:1	2.7 A	11 3/4 in	6Z411
148 RPM	101 in-lb	325 lb	1/4	12:1	2.7 A	11 3/4 in	6Z412
20 RPM	1,112 in-lb	325 lb	1/2	87:1	4.2 A	14 in	6Z413
34 RPM	822 in-lb	325 lb	1/2	50:1	5.0 A	14 in	6Z414
40 RPM	664 in-lb	325 lb	1/2	41:1	5.0 A	14 in	6Z415
60 RPM	464 in-lb	325 lb	1/2	28:1	5.0 A	14 in	6Z416
90 RPM	305 in-lb	325 lb	1/2	19:1	5.0 A	14 in	6Z417
144 RPM	202 in-lb	325 lb	1/2	12:1	5.0 A	14 in	6Z418



Description	For Use With	Item No.
Replacement Parts		
Motor Brush Set	6Z406, 6Z407, 6Z408, 6Z409, 6Z410, 6Z411, 6Z412, 6Z413B, 6Z414B, 6Z415B, 6Z416B, 6Z417B, 6Z418B	6YHY9
Motor Brush and Spring Set	6Z406A, 6Z407A, 6Z408A, 6Z409A, 6Z410A, 6Z411A, 6Z412A, 6Z413, 6Z414, 6Z415, 6Z416, 6Z417, 6Z418, 6Z413A, 6Z414A, 6Z415A, 6Z416A, 6Z417A, 6Z418A	11N180