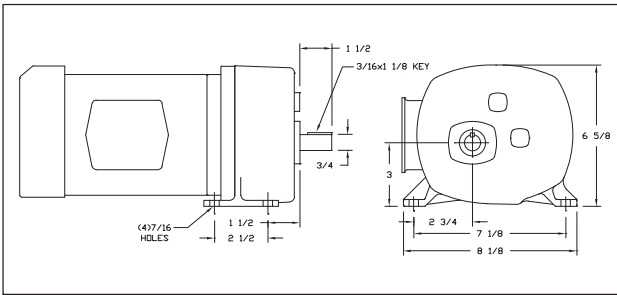




**3-Phase  
4Z384**

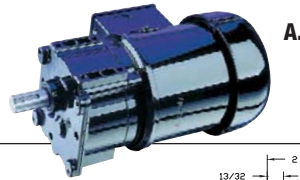


**115VAC Split-Phase and  
208-230/460VAC 3-Phase  
Parallel-Shaft Gearmotors**

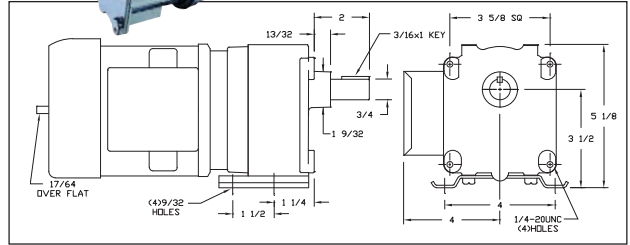
- Enclosure: totally enclosed fan-cooled
- Gearcase: die-cast aluminum
- Lubrication: permanent heavy gear oil
- Gears: hardened steel, AGMA Class 9
- Bearings: heavy-duty ball and needle roller, and thrust balls on case; ball on motor
- Mounting: all-position
- Rotation: reversible
- Thermal protection: none
- Ambient: 40°C
- Brake: for split-phase adaptable to 4Z447; for 3-phase adaptable to 2LV2 (sold separately on Grainger.com)

Nameplate RPM	Max. Torque	Input HP	Gear Ratio	Full Load Amps	Length Less Shaft	Item No.
<b>Split-Phase, 115V AC, Overhung Load 325 lb</b>						
5.4 RPM	1,087 in-lb	1/4 hp	316:1	4	12 3/16 in	6Z399
8.5 RPM	974 in-lb	1/4 hp	210:1	4	12 3/16 in	6Z400
12 RPM	992 in-lb	1/4 hp	143:1	4	12 3/16 in	6K351
18 RPM	800 in-lb	1/4 hp	95:1	4	12 3/16 in	6Z401
18 RPM	1,017 in-lb	1/2 hp	95:1	5.5	12 3/16 in	6Z402
22 RPM	1,105 in-lb	1/2 hp	80:1	7.8	12 3/4 in	6Z403
27 RPM	500 in-lb	1/4 hp	64:1	4	12 3/16 in	6K352
27 RPM	700 in-lb	1/2 hp	64:1	5.5	12 3/16 in	6K396
39 RPM	450 in-lb	1/2 hp	43:1	5.5	12 3/16 in	2Z842
41 RPM	700 in-lb	1/2 hp	43:1	7.8	12 3/4 in	6K375
59 RPM	240 in-lb	1/4 hp	29:1	4	12 3/16 in	6K353
59 RPM	320 in-lb	1/2 hp	29:1	5.5	12 3/16 in	6K369
61 RPM	480 in-lb	1/2 hp	29:1	7.8	12 3/4 in	6K583
89 RPM	220 in-lb	1/2 hp	19:1	5.5	12 3/16 in	2Z843
91 RPM	320 in-lb	1/2 hp	19:1	7.8	12 3/4 in	6K383
134 RPM	100 in-lb	1/4 hp	13:1	4	12 3/16 in	6K354
137 RPM	215 in-lb	1/2 hp	13:1	7.8	12 3/4 in	6K506
153 RPM	125 in-lb	1/2 hp	11:1	5.5	12 3/16 in	2Z844
276 RPM	70 in-lb	1/4 hp	6:1	5.5	12 3/16 in	2Z845
<b>3-Phase, 208-230/460V AC, Overhung Load 325 lb</b>						
18 RPM	1,028 in-lb	1/2 hp	95:1	1.32/0.66	12 3/16 in	6Z404 *
21 RPM	1,017 in-lb	1/2 hp	80:1	1.79/0.89	12 3/16 in	6Z405 *
27 RPM	687 in-lb	1/2 hp	64:1	1.32/0.66	12 3/16 in	4Z384 *
40 RPM	483 in-lb	1/2 hp	43:1	1.32/0.66	12 3/16 in	4Z385 *
40 RPM	737 in-lb	1/2 hp	43:1	1.79/0.89	12 3/16 in	4Z390 *
59 RPM	493 in-lb	1/2 hp	29:1	1.79/0.89	12 3/16 in	4Z391 *
60 RPM	322 in-lb	1/2 hp	29:1	1.32/0.66	12 3/16 in	4Z386 *
89 RPM	327 in-lb	1/2 hp	19:1	1.79/0.89	12 3/16 in	4Z392 *
90 RPM	214 in-lb	1/2 hp	19:1	1.32/0.66	12 3/16 in	4Z387 *
133 RPM	219 in-lb	1/2 hp	13:1	1.79/0.89	12 3/16 in	4Z393 *
155 RPM	124 in-lb	1/2 hp	11:1	1.32/0.66	12 3/16 in	4Z388 *
276 RPM	105 in-lb	1/2 hp	6:1	1.79/0.89	12 3/16 in	4Z394 *
279 RPM	69 in-lb	1/2 hp	6:1	1.32/0.66	12 3/16 in	4Z389 *

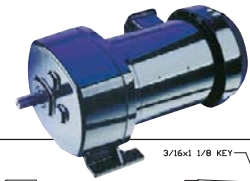
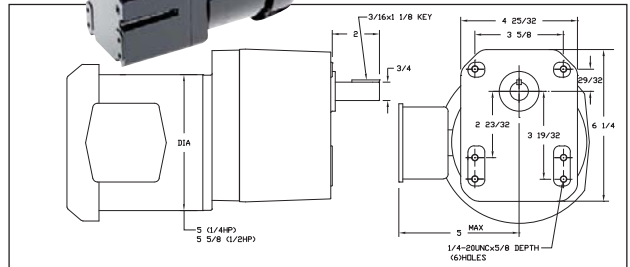
\* Operable on 190/380V, 50 Hz at 5/6 of 60 Hz ratings for HP and RPM.



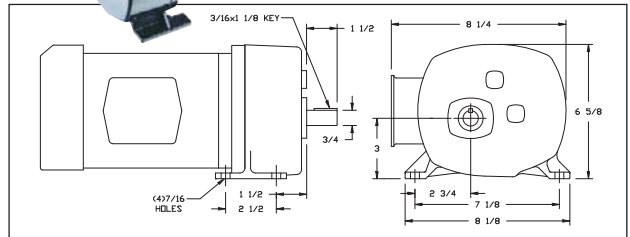
**A.**



**B.**



**C.**



**230VAC Inverter-Duty 3-Phase  
Parallel-Shaft Gearmotors**

- Enclosure: totally enclosed fan-cooled
- Gearcase: die-cast aluminum
- Operating range: 6 to 90 Hz
- Constant torque: 6 to 60 Hz
- Constant HP: 60 to 90 Hz
- No gear-limited ratios
- Lubrication: lifetime oil sealed
- Gears: hardened steel, AGMA Class 9
- Mounting: all-position
- 60/50 Hz
- Rotation: reversible
- Thermal protection: thermostat
- Ambient: 40°C

Note: Ratings shown are at 60 Hz. Gearmotors are also operable at 50 Hz, with HP and rpm at 5/6 of the 60 Hz rating.

Key	Nameplate RPM	Max. Torque	Overhung Load	Input HP	Gear Ratio	Full Load Amps	Length Less Shaft	Item No.
A	60 RPM	244 in-lb	257 lb	1/4 hp	28:1	0.75	11 3/32 in	4ZJ52 *
	90 RPM	165 in-lb	238 lb	1/4 hp	19:1	0.75	11 3/32 in	4ZJ54 *
	155 RPM	91.7 in-lb	206 lb	1/4 hp	11:1	0.75	11 3/32 in	4ZJ55 *
B	19 RPM	717 in-lb	900 lb	1/4 hp	90:1	0.75	10 3/4 in	4ZJ49
	24 RPM	580 in-lb	750 lb	1/4 hp	70:1	0.75	10 3/4 in	4ZJ50
C	63.1 RPM	440 in-lb	600 lb	1/2 hp	28:1	1.6	14 3/8 in	4ZJ53
	29 RPM	941 in-lb	600 lb	1/2 hp	59:1	1.6	13 7/8 in	4ZJ51
	282 RPM	100 in-lb	491 lb	1/2 hp	6:1	1.6	13 3/8 in	4ZJ56

\* Unit has rear shaft extension.