

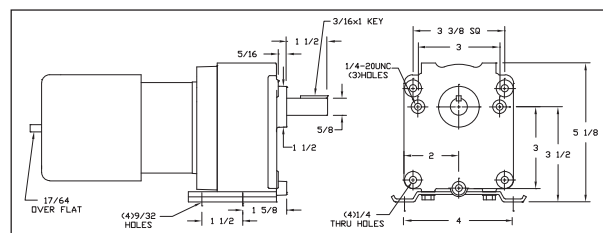
115VAC Shaded Pole and Split-Phase Parallel-Shaft Gearmotors

Dayton

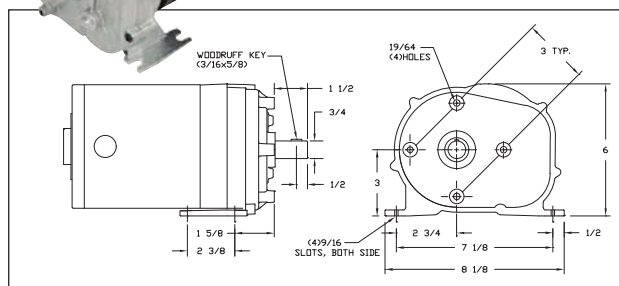
- Enclosure: totally enclosed fan cooled
- Gearcase: die-cast aluminum
- Lubrication: permanent heavy gear oil
- Gears: hardened steel, AGMA Class 9
- Bearings: heavy-duty needle roller and thrust ball bearings on case; ball on motor
- Mounting: all-position
- 60 Hz
- Rotation: clockwise facing output shaft on shaded pole models; reversible on split-phase models
- Thermal protection: none
- Ambient: 40°C
- Brake: adaptable to 5X400. 1 brake disk required for all units (sold separately on Grainger.com)



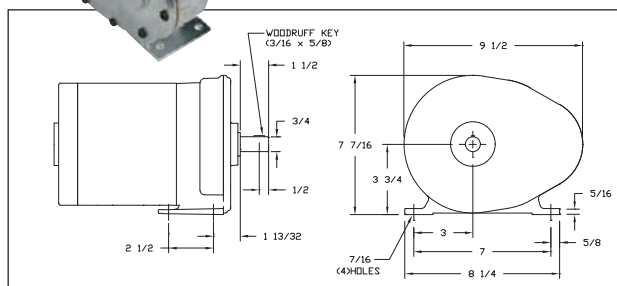
Nameplate RPM	Max. Torque	Overhung Load	Input HP	Gear Ratio	Full Load Amps	Length Less Shaft	Item No.
Shaded Pole							
4.1 RPM	200 in-lb	175 lb	1/40 hp	396:1	1.5	8 3/8 in	3M326
6.1 RPM	200 in-lb	175 lb	1/40 hp	265:1	1.5	8 3/8 in	3M327
14 RPM	200 in-lb	175 lb	1/20 hp	118:1	1.9	8 1/2 in	3M328
30 RPM	126 in-lb	175 lb	1/4 hp	53:1	2.3	8 7/8 in	3M329
70 RPM	55 in-lb	175 lb	1/4 hp	23:1	2.3	8 7/8 in	3M330
Split-Phase							
14 RPM	200 in-lb	175 lb	1/4 hp	118:1	1.5	9 1/8 in	22817
30 RPM	125 in-lb	175 lb	1/4 hp	53:1	1.5	9 1/8 in	6K303
68 RPM	55 in-lb	175 lb	1/4 hp	23:1	1.5	9 1/8 in	22818
100 RPM	38 in-lb	175 lb	1/4 hp	17:1	1.5	9 1/8 in	22841



A.



B.



115VAC Split-Phase Parallel-Shaft Gearmotors

Dayton

- Enclosure: open dripproof
- Gearcase: die-cast zinc
- Lubrication: grease filled
- Gears: cut steel and phenolic
- Bearings: A. porous bronze sleeve on case; ball on motor
- B. ball on case and motor
- Mounting: all-position
- 60 Hz
- Rotation: reversible
- Thermal protection: none
- Ambient: 40°C

Key	Nameplate RPM	Max. Torque	Overhung Load	Input HP	Gear Ratio	Full Load Amps	Length Less Shaft	Item No.
A	6 RPM	600 in-lb	300 lb	1/4 hp	286:1	3.1	9 1/8 in	1LPP7 *
	12 RPM	600 in-lb	300 lb	1/2 hp	144:1	3.3	9 1/8 in	1LPP6 *
	18 RPM	550 in-lb	300 lb	1/2 hp	97:1	3.6	9 1/8 in	1LPP5 *
	30 RPM	400 in-lb	190 lb	1/4 hp	57:1	3.9	9 1/8 in	1LPP4 *
	40 RPM	330 in-lb	190 lb	1/4 hp	43:1	4.1	9 1/8 in	1LPP3
	60 RPM	200 in-lb	190 lb	1/4 hp	29:1	3.9	9 1/8 in	1LPP2
	90 RPM	150 in-lb	150 lb	1/4 hp	19:1	4.1	9 1/8 in	1LPP1
	120 RPM	100 in-lb	110 lb	1/4 hp	14:1	3.9	9 1/8 in	1LPN9
	31 RPM	800 in-lb	400 lb	1/2 hp	56:1	8.3	10 in	1LPU5
	62 RPM	400 in-lb	400 lb	1/2 hp	28:1	8.3	10 in	1LPU4
B	92 RPM	287 in-lb	400 lb	1/2 hp	19:1	8.3	10 in	1LPU3

* Output torque is gear limited.

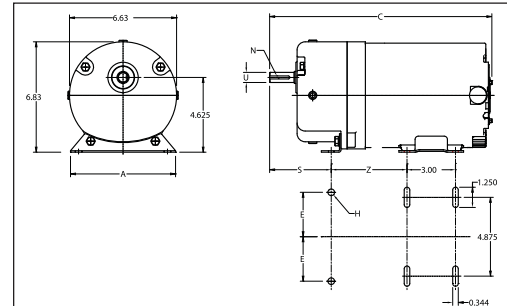
Dayton

115VAC Split-Phase and 208-230/460VAC 3-Phase Parallel-Shaft Gearmotors

- Enclosure: open dripproof
- Gearcase: cast-iron
- Lubrication: factory filled with AGMA4 oil
- Gears: steel
- Bearings: ball on case; ball on motor
- Mounting: horizontal
- 60 Hz
- Rotation: reversible
- Thermal protection: none
- Ambient: 40°C



4FDY9



Nameplate RPM	Max. Torque	Overhung Load	Input HP	Gear Ratio	Full Load Amps	A	C	E	H	Dimensions (in.)	N	S	U	Z	Shaft Length	Item No.
Split-Phase, 115V AC																
45 RPM	438 in-lb	385 lb	1/2 hp	38:1	5.9	7.13	14.27	3.125	0.410	.2500 x 1.375	4.375 in	1"	4.750	2.25"		4FDY9
89 RPM	219 in-lb	245 lb	1/4 hp	19:1	5.9	6.50	13.65	2.750	0.344	.1875 x 1.125	3.81"	3/8 in	4.688	1.63"		4FDZ1
157 RPM	125 in-lb	245 lb	1/4 hp	11:1	5.9	6.50	13.65	2.750	0.344	.1875 x 1.125	3.812"	3/8 in	4.688	1.63"		4FDZ2
288 RPM	69 in-lb	245 lb	1/4 hp	6:1	5.9	6.50	13.65	2.750	0.344	.1875 x 1.125	3.812 in	3/8 in	4.688	1.63 in		4FDZ3
3-Phase, 208-230/460V AC																
157 RPM	125 in-lb	245 lb	1/4 hp	11:1	1.4-1.3/0.7	6.50	13.65	2.750	0.344	.1875 x 1.125	3.81"	3/8 in	5.125	1.63"		4FDZ4

Sign in to **Grainger.com**® to see **YOUR Pricing** and **MORE**