



115, 230, and
115/230VAC Permanent
Split Capacitor Parallel-
Shaft Gearmotors



Note: Ratings shown are at 60 Hz. 60/50-Hz gearmotors are also operable at 50 Hz, with HP and rpm at 5/6 of the 60-Hz rating. 6Z081, 6Z082, 6Z083, 6A197, 6Z084, and 6A196 are operable at 60 Hz only.

- A.
Gearcase: die-cast aluminum
Lubrication: permanent heavy gear oil
Gears: 1st stage steel, subsequent stages steel or heat-treated powdered metal
Bearings: Heavy-duty needle on case; ball on motor
Mounting: all-position (optional mounting bracket 2A754)
Rotation: reversible
Thermal protection: none; impedance on 6Z073 to 6Z076
Ambient: 40°C
Brake: adaptable to 5X400 (sold separately on Grainger.com)



A.
Shown with
conduit box
accessory

- B.
Enclosure: totally enclosed, nonventilated
Gearcase: CNC machined, die-cast aluminum
Lubrication: grease-filled
Gears: first stage high-strength polymer and powdered metal
Bearings: ball bearings for motor, needle for output shaft
Mounting: all-position (optional mounting bracket 2A754)
Rotation: reversible
Thermal protection: none
Ambient: 40°C
Brake: adaptable to 5X400 (sold separately on Grainger.com)



B.

- C.
Enclosure: totally enclosed, nonventilated
Gearcase: die-cast zinc
Lubrication: grease-filled
Gears: steel, 1st stage acetal
Bearings: sleeve on case; ball on motor
Mounting: all-position
Rotation: reversible
Thermal protection: none
Ambient: 40°C



C.

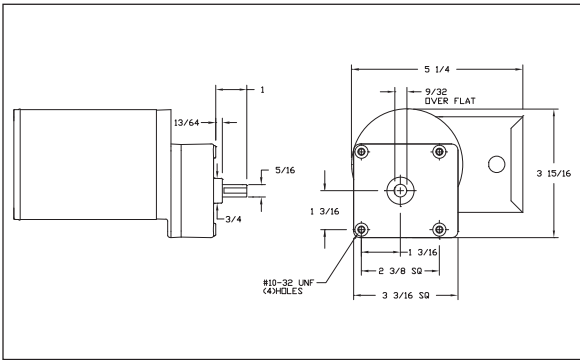
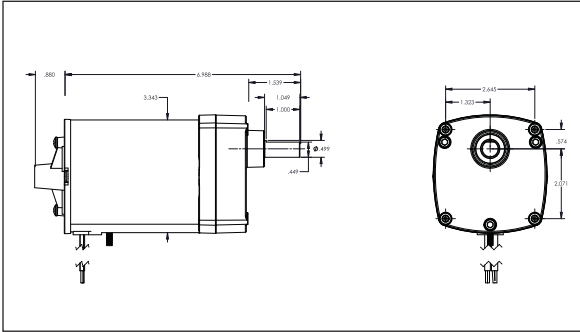
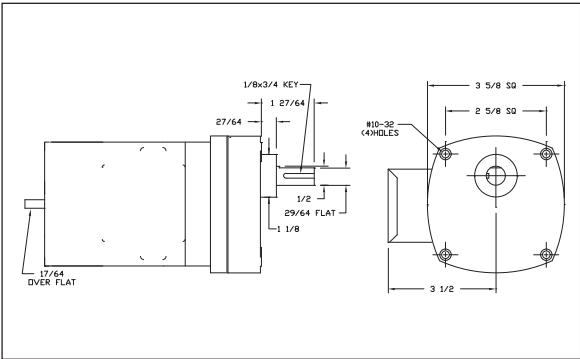


Table with 11 columns: Key, Nameplate RPM, Max. Torque, Overhung Load, Input HP, Gear Ratio, Full Load Amps, Length Less Shaft, Capacitor Req., Item No.
Rows include Open, 115V AC, 60/50 Hz; Open, 230V AC, 60/50 Hz; and TENV, 115V AC, 60 Hz.

Table with 11 columns: Key, Nameplate RPM, Max. Torque, Overhung Load, Input HP, Gear Ratio, Full Load Amps, Length Less Shaft, Capacitor Req., Item No.
Rows include TENV, 230V AC, 60/50 Hz; TENV, 115V AC, 60/50 Hz; TENV, 115/230V AC, 60/50 Hz; and Accessories.