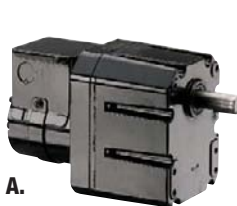


115/230VAC Permanent Split Capacitor Parallel- Shaft Gearmotors

Dayton



A.



B.



C.

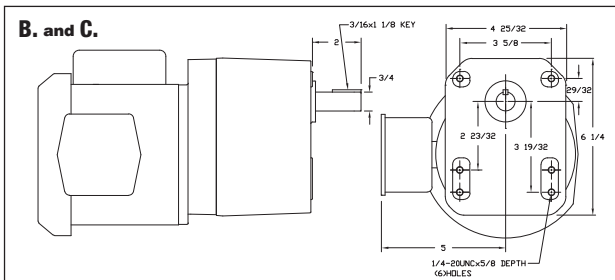
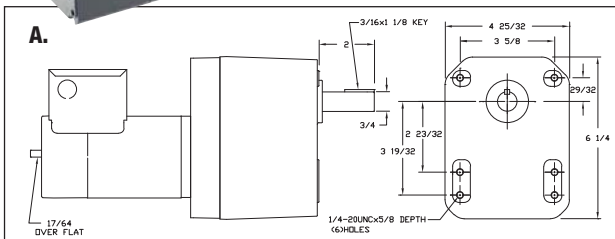
- Gearcase: die-cast aluminum
- Lubrication: permanent heavy gear oil
- Gears: hardened steel, AGMA Class 9
- Bearings: needle throughout with thrust ball on case and ball on motor
- Mounting: all position
- 60/50 Hz

- Rotation: reversible
- Thermal protection: none
- Ambient: 40°C
- Capacitor: included
- Brake: adaptable to 5X400 (A. and B. units), sold separately on Grainger.com

Note: Ratings shown are at 60 Hz. Gearmotors are also operable at 50 Hz, with HP and rpm at 5/6 of the 60-Hz rating.

Key	Nameplate RPM	Max. Torque	Overhung Load	Input HP	Gear Ratio	Full Load Amps	Length Less Shaft	Item No.
TENV								
A	1.2 RPM	710 in-lb	900 lb	1/8 hp	1427:1	0.36/0.21	9 1/4 in	2H618
TEFC								
B	6 RPM	710 in-lb	900 lb	1/8 hp	276:1	2.1/1.1	11 5/8 in	2H616 *
	12 RPM	700 in-lb	900 lb	1/8 hp	138:1	2.1/1.1	11 5/8 in	2H614 *
	14 RPM	630 in-lb	900 lb	1/8 hp	116:1	2.1/1.1	11 5/8 in	2H612 *
	30 RPM	660 in-lb	650 lb	1/2 hp	54:1	5.2/2.8	16 in	2H610 †
C	58 RPM	490 in-lb	600 lb	1/2 hp	28:1	5.2/2.8	16 in	2H608 †
	81 RPM	345 in-lb	550 lb	1/2 hp	20:1	5.2/2.8	16 in	2H606 †

* Capacitor remotely mounted. † No rear-shaft extension.



115/230VAC Permanent Split Capacitor Parallel-Shaft Gearmotors

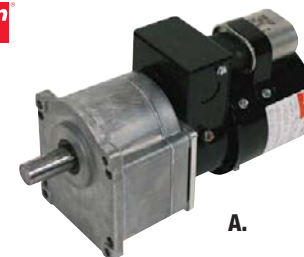
Dayton

- Enclosure: totally enclosed fan cooled
- Gearcase: machined die-cast aluminum
- Lubrication: permanent heavy-duty gear oil
- Gears: hardened steel, AGMA Class 9
- Bearings: ball and needle on case, ball on motor
- Mounting: all position
- 60/50 Hz

- Rotation: reversible
- Thermal protection: none
- Motor dia.: A. 4", B. 5.5"
- Ambient: 40°C
- Capacitor: included
- Brake: adaptable to 5X400 (sold separately on Grainger.com)

Note: Ratings shown are at 60 Hz. Gearmotors are also operable at 50 Hz, with HP and rpm at 5/6 of the 60-Hz rating.

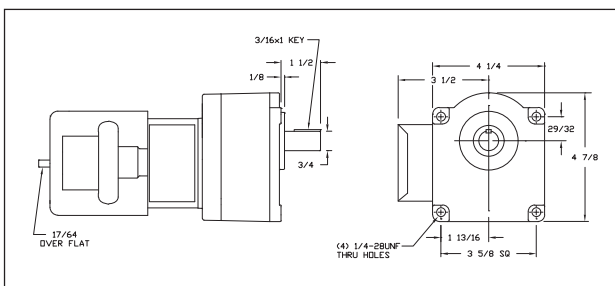
Key	Nameplate RPM	Max. Torque	Overhung Load	Input HP	Gear Ratio	Full Load Amps	Length Less Shaft	No. of Brake Discs Req.	Item No.
A	6 RPM	500 in-lb	300 lb	1/2 hp	266:1	1.2/0.63	9 1/2 in	1	1LPX6
	10 RPM	500 in-lb	300 lb	1/2 hp	164:1	1.2/0.63	9 1/2 in	1	1LPX5
	14 RPM	340 in-lb	300 lb	1/2 hp	114:1	1.2/0.63	9 1/2 in	1	1LPX3
	15 RPM	500 in-lb	400 lb	1/2 hp	108:1	2.05/1.05	10 in	2	1LPX4
	20 RPM	500 in-lb	400 lb	1/2 hp	80:1	2.05/1.05	10 in	2	1LPX2
	30 RPM	360 in-lb	400 lb	1/2 hp	54:1	2.05/1.05	10 in	2	1LPX1
B	43 RPM	265 in-lb	400 lb	1/2 hp	38:1	2.05/1.05	10 in	2	1LPW9
	63 RPM	180 in-lb	400 lb	1/2 hp	26:1	2.05/1.05	10 in	2	1LPW8
	91 RPM	130 in-lb	400 lb	1/2 hp	18:1	2.05/1.05	10 in	2	1LPW7
	156 RPM	77 in-lb	400 lb	1/2 hp	10:1	2.05/1.05	10 in	2	1LPW6



A.



B.



115/230VAC Permanent Split Capacitor Parallel-Shaft Gearmotors

Dayton

- Enclosure: totally enclosed fan cooled
- Gearcase: die-cast zinc
- Lubrication: grease filled
- Gears: heat-treated steel/phenolic
- Bearings: porous bronze sleeve on case; ball on motor
- Mounting: all-position
- 60/50 Hz

- Rotation: reversible
- Thermal protection: none
- Ambient: 40°C
- Capacitor included
- Brake: adaptable to 5X400 using 1 disc in brake (sold separately on Grainger.com)

Note: Ratings shown are at 60 Hz. Gearmotors are also operable at 50 Hz, with HP and rpm at 5/6 of the 60 Hz rating.

Nameplate RPM	Max. Torque	Overhung Load	Input HP	Gear Ratio	Full Load Amps	Length Less Shaft	Item No.
6 RPM	600 in-lb	250 lb	1/12 hp	267:1	1.2/0.63	9 1/2 in	1LPL5
12 RPM	400 in-lb	250 lb	1/12 hp	135:1	1.2/0.63	9 1/2 in	1LPL4
20 RPM	250 in-lb	250 lb	1/12 hp	81:1	1.2/0.63	9 1/2 in	1LPL3

1LPL3

