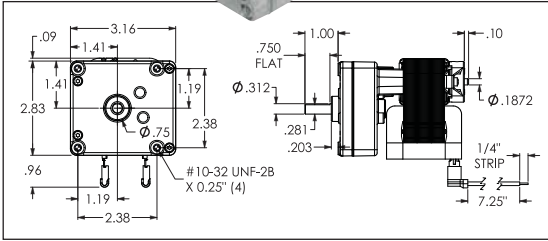
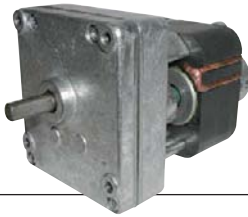




1MBF3



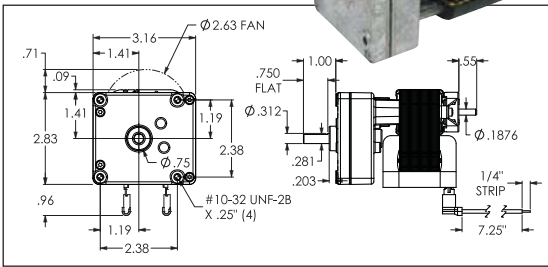
115VAC Shaded Pole Parallel-Shaft Gearmotors



- Enclosure: open
- Gearcase: die-cast zinc
- Lubrication: grease filled
- Gears: heat-treated cut steel and acetal
- Bearings: porous bronze sleeve on both case and motor
- Mounting: all-position
- 60 Hz
- Rotation: clockwise facing output shaft
- Thermal protection: impedance

Nameplate RPM	Max. Torque	Overhung Load	Input HP	Gear Ratio	Full Load Amps	Length Less Shaft	Item No.
1.1 RPM	50 in-lb	41 lb	1/670 hp	3231:1	0.38	4 in	1MBF3
2.2 RPM	32 in-lb	41 lb	1/476 hp	1526:1	0.38	4 in	1MBF4
6.6 RPM	25 in-lb	41 lb	1/229 hp	504:1	0.38	4 in	1MBF5
11.5 RPM	26 in-lb	41 lb	1/38 hp	294:1	0.57	3 7/8 in	1MBF6
20 RPM	15 in-lb	41 lb	1/59 hp	168:1	0.57	3 7/8 in	1MBF7
30.6 RPM	12 in-lb	41 lb	1/42 hp	107:1	0.57	3 7/8 in	1MBF8
66 RPM	4.7 in-lb	41 lb	1/48 hp	51:1	0.57	3 7/8 in	1MBF9
130 RPM	2.7 in-lb	41 lb	1/45 hp	26:1	0.57	3 7/8 in	1MBG1
197 RPM	2.2 in-lb	41 lb	1/95 hp	16:1	0.38	3 1/2 in	1MBG2

1MBG3



115VAC Shaded Pole Parallel-Shaft Gearmotors

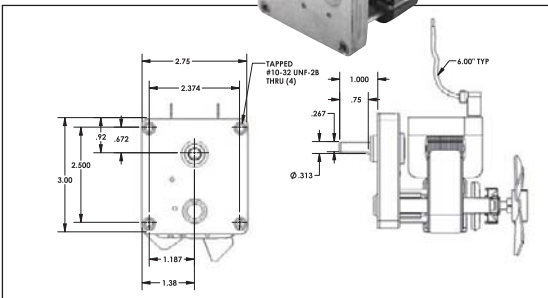
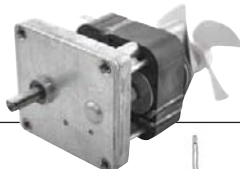


- Enclosure: open
- Gearcase: gasketed die-cast zinc with screws
- Lubrication: grease filled
- Gears: hardened steel and phenolic
- Bearings: roller on case; ball and porous bronze sleeve on motor
- Mounting: all-position
- 60/50 Hz
- Rotation: clockwise facing output shaft
- Thermal protection: auto
- Insulation: Class B

Note: Ratings shown are at 60 Hz. Gearmotors are also operable at 50 Hz, with HP and rpm at 5/6 of the 60 Hz rating.

Nameplate RPM	Max. Torque	Overhung Load	Input HP	Gear Ratio	Full Load Amps	Length Less Shaft	Item No.
1.1 RPM	100 in-lb	54 lb	1/316 hp	3231:1	0.62	4 3/4 in	1MBG3
6.7 RPM	50 in-lb	41 lb	1/111 hp	504:1	0.62	4 3/4 in	1MBG4
13 RPM	50 in-lb	18 lb	1/64 hp	252:1	1.2	4 3/4 in	1MBG5
214 RPM	5 in-lb	2 lb	1/43 hp	16:1	1.4	4 3/4 in	1MBG6
368 RPM	3.3 in-lb	1 lb	1/42 hp	9:1	1.4	4 3/4 in	1MBG7

52JD91



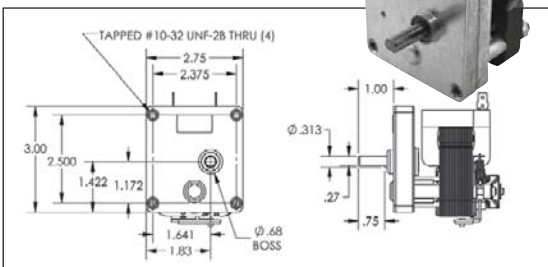
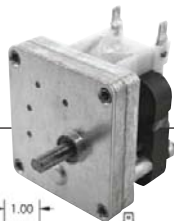
115VAC Shaded Pole Parallel-Shaft Gearmotors



- Enclosure: open
- Gearcase: die-cast zinc with steel cover
- Lubrication: grease filled
- Gears: sintered steel
- Bearings: porous bronze sleeve on case and motor
- 60 Hz
- Rotation: clockwise facing output shaft
- Thermal protection: auto
- Ambient: 40°C

Nameplate RPM	Starting Torque	Max. Torque	Overhung Load	Input HP	Gear Ratio	Full Load Amps	Length Less Shaft	Gearmotor Mounting Position	Item No.
Magnetic Brake									
25 RPM	11 in-lb	13 in-lb	30 lb	1/70 hp	125.5:1	0.75	4 1/8 in	All Angle	52JD92
50 RPM	4.5 in-lb	6 in-lb	30 lb	1/70 hp	69.2:1	0.75	4 1/8 in		52JD93
Cone Brake									
25 RPM	11 in-lb	13 in-lb	30 lb	1/70 hp	125.5:1	0.75	4 1/8 in	Horizontal	52JD91
50 RPM	4.5 in-lb	6 in-lb	30 lb	1/70 hp	69.2:1	0.75	4 1/8 in		52JD94

52JE19



115 and 230VAC Shaded Pole Parallel-Shaft Gearmotors



- Enclosure: open
- Gearcase: die-cast zinc with steel cover
- Lubrication: grease filled
- Gears: sintered steel
- Bearings: porous bronze sleeve on both case and motor
- Mounting: all-position
- Rotation: clockwise facing output shaft
- Thermal protection: impedance
- Ambient: 40°C

Nameplate RPM	Max. Torque	Overhung Load	Input HP	Gear Ratio	Full Load Amps	Length Less Shaft	Item No.
115V AC, 60 Hz							
7 RPM	30 in-lb	30 lb	1/100 hp	439.3:1	Magnetic	0.52	3 1/4 in
7 RPM	30 in-lb	30 lb	1/100 hp	439.3:1	Cone	0.52	3 1/2 in
230V AC, 50 Hz (3 leads)							
5.8 RPM	30 in-lb	30 lb	1/100 hp	439.3:1	Magnetic	0.26	3 3/4 in