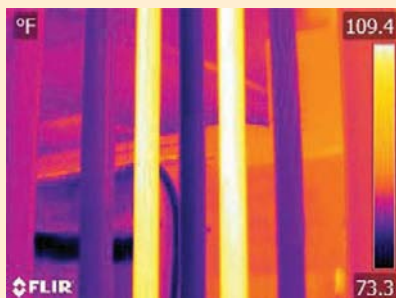
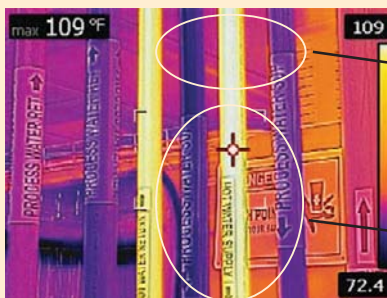


MSX Technology Makes Infrared Imaging Affordable for Everyday Use

Multispectral dynamic imaging (MSX) makes it easier to interpret an infrared image by adding visual-spectrum detail—eliminating the need to refer back to a visual image. Visible edges are detected and added to the infrared image for extraordinary infrared detail that instantly highlights and orients problem locations. Text becomes clearly visible to read labels or identifiers within the image.



Hot Water Transfer
Without MSX



Hot Water Transfer
Pipes With MSX

Image detail
orients the
problem location

Visible text
labels are
easy to read

The infrared images shown are for illustrative purposes only, and may not have been taken by the camera series depicted.

E4, E5, E6, and E8 Infrared Cameras with Wi-Fi Connectivity

- With MSX Enhancement
- IR detector resolution up to 76,800 pixels (320 x 240)
- On-board 640 x 480 digital camera
- 3" color LCD
- Easy to use; weigh only 1.27 lb.

Diagnostic instruments capture and store simultaneous infrared (IR), visual, and MSX-enhanced image data as radiometric JPEGs. Feature spot measurement mode and blending function (Fusion).

Each includes FLIR Tools reporting software, USB cable, power supply/charger with 4 plugs, hard carrying case, and swappable rechargeable battery. NIST Certified model includes calibration certificate.

Enhanced features on E6 and E8 models include level/span picture-in-picture image and area box measurement mode. E8 model also includes an extra battery and external battery charger.



22UL83

Temp. Range (F)	Temp. Accuracy (F)	Thermal Sensitivity	Detector Resolution	Picture In Picture	Focus Method	Removable Memory Card	Data Logging	NIST Certified	Mfr. Model	Item No.
-4° to 482°	+/-2.0% or +/-3.6° Whichever is Greater	150 mK	80 x 60 Pixels	No	Auto	No	Yes	No	FLIR E4	22UL83
-4° to 482°	+/-2.0% or +/-3.6° Whichever is Greater	150 mK	80 x 60 Pixels	No	Auto	No	Yes	Yes	FLIR E4-NIST	22UL84
-4° to 752°	+/-3.6°	150 mK	160 x 120 Pixels	Yes	Auto	Yes	Yes	No	FLIR E5-XT WiFi	54ZW44
-4° to 1022°	+/-3.6°	60 mK	240 x 180 Pixels	Yes	Auto	Yes	Yes	No	FLIR E6-XT WiFi	54ZW45
-4° to 1022°	+/-3.6°	50 mK	320 x 240 Pixels	Yes	Auto	Yes	Yes	No	FLIR E8-XT WiFi	54ZW46

Training

Thermal imaging professionals can learn to get the most out of their equipment at the Infrared Training Center (ITC), the world's largest dedicated IR applications training organization. ITC courses from beginner (Level I), to seasoned professional (Level III), lead to certification accepted by NETA (InterNational Electrical Testing Association), an ANSI standards developer.



Item	Item No.
For All Infrared Cameras Regardless of the Manufacturer	
Level I Certification Training	2PZE7
Level II Certification Training	3EMK9
Level III Certification Training	3EML1



2PZE7



3EMK9



3EML1

Accessories for Flir IR Cameras



Item	For Use With	Features	Mfr. Model	Item No.
Battery	FLIR T5xx Series and IR FLIR Ex Series Cameras	High Capacity, Li-Ion Rechargeable	T199300ACC	423N32
Battery Charger	FLIR T5xx Series	External Battery Charger Lets You Charge A Battery While Using The Camera So That You Never Run Out of Battery Power	T199362ACC	22UL70
Battery Charger, Incl. Power Car Charger	FLIR Ex Series	Battery Charger	T198531	22UL71
	FLIR K2	Power Supply with 4 Multi-Plugs US, EU, UK, AU	T199128	48GE76
	FLIR E series, K2, C2, C3	Stand-alone 2-bay battery charger	T198125	22DD12
			T198532	22UL72
Infrared Lens	FLIR Exx Series, FLIR T5xx, T8xx Series	Can Be Shared Between Cameras Without The Need for Secondary Pairing or Factory Recalibration, Case Protects Lens During Transport and Storage, Interchangeable Auto Cal Lens 14°	T199588	423N29
	FLIR Exx Series, FLIR T5xx, T8xx Series	Can Be Shared Between Cameras Without The Need for Secondary Pairing or Factory Recalibration, Case Protects Lens During Transport and Storage, Interchangeable Auto Cal Lens 24°	T199589	423N31
Lens	T1010, T1020, T1030SC, T1040, T1050SC	—	T199077	460X55
	T1010, T1020, T1030SC, T1040, T1050SC	—	T199066	460X56
Li-Ion Rechargeable Battery	FLIR K45, FLIR K55, FLIR K65	3.6V, 4.4Ah	T199368ACC	48GE68
	FLIR K Series	3.6V, 2.6Ah	T199423ACC	48GE75
Wide Angle Infrared Lens	FLIR Exx Series, FLIR T5xx, T8xx Series	Can Be Shared Between Cameras Without The Need for Secondary Pairing or Factory Recalibration, Case Protects Lens During Transport and Storage, Interchangeable Auto Cal Lens 42°	T199590	423N30



423N33



423N29



460X55