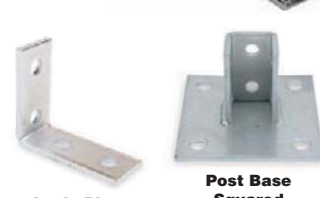




Superstrut[®] Metal Framing



Strut Channel Size	L	Gauge	ZINC-PLATED STEEL Item No.	WHITE PAINTED STEEL Item No.	PRE-GALVANIZED STEEL Item No.	GREEN PAINTED STEEL Item No.	BLACK PAINTED STEEL Item No.	ALUMINUM Item No.	304 STAINLESS STEEL Item No.	
Back to Back Slotted Channel										
1½ in x 1½ in	1 ft	14 ga	—	45YX11	45YX04	45YW96	45YX18	—	45YX25	
	1 ft 6 in	14 ga	—	45YX12	45YX05	45YW97	45YX19	—	45YX26	
	2 ft	14 ga	—	45YX13	45YX06	45YW98	45YX20	—	45YX27	
	3 ft	14 ga	—	45YX14	45YX07	45YW99	45YX21	—	45YX28	
	4 ft	14 ga	—	45YX15	45YX08	45YX01	45YX22	—	45YX29	
	5 ft	14 ga	—	45YX16	45YX09	45YX02	45YX23	—	45YX30	
	10 ft	14 ga	—	45YX17	45YX10	45YX03	45YX24	—	45YX31	
	1 ft	12 ga	—	45YW75	45YW68	45YW61	45YW82	—	45YW89	
	1 ft 6 in	12 ga	—	45YW76	45YW69	45YW62	45YW83	—	45YW90	
	2 ft	12 ga	—	45YW77	45YW70	45YW63	45YW84	—	45YW91	
3 ft	12 ga	—	45YW78	45YW71	45YW64	45YW85	—	45YW92		
4 ft	12 ga	—	45YW79	45YW72	45YW65	45YW86	—	45YW93		
5 ft	12 ga	—	45YW80	45YW73	45YW66	45YW87	—	45YW94		
10 ft	12 ga	—	45YW81	45YW74	45YW67	45YW88	—	45YW95		
Side to Side Solid Channel										
1½ in x 3¼ in	10 ft	12 ga	—	45YX35	45YX32	45YX33	45YX36	—	45YX34	
Single Solid Channel										
1½ in x 1½ in	1 ft	12 ga	—	45YW01	45YV95	45YV90	45YV07	45YV19	45YV13	
	1 ft 6 in	12 ga	—	45YW02	45YV96	45YV91	45YV08	45YV20	45YV14	
	2 ft	12 ga	—	45YW03	45YV97	45YV92	45YV09	45YV21	45YV15	
	3 ft	12 ga	—	45YW04	45YV98	45YV93	45YV10	45YV22	45YV16	
	4 ft	12 ga	—	45YW05	45YV99	45YV94	45YV11	45YV23	45YV17	
	5 ft	12 ga	—	45YW06	—	—	45YV12	45YV24	45YV18	
	10 ft	12 ga	2HAL5	—	5YB82	4A975	—	45YV25	2HAN3	
	1 ft	14 ga	—	45YW36	45YV31	45YV26	45YV42	45YV54	45YV48	
	1 ft 6 in	14 ga	—	45YW37	45YV32	45YV27	45YV43	45YV55	45YV49	
	2 ft	14 ga	—	45YW38	45YV33	45YV28	45YV44	45YV56	45YV50	
1½ in x 1¾ in	3 ft	14 ga	—	45YW39	45YV34	45YV29	45YV45	45YV57	45YV51	
	4 ft	14 ga	—	45YW40	45YV35	45YV30	45YV46	45YV58	45YV52	
	5 ft	14 ga	—	45YW41	—	—	45YV47	45YV59	45YV53	
	10 ft	14 ga	2HAN2	—	5YB83	5YB84	—	45YV60	2HAL6	
	Single Slotted Channel									
	1½ in x 1½ in	1 ft	12 ga	—	45YV30	45YV25	45YV20	45YV36	45YV48	45YV42
		1 ft 6 in	12 ga	—	45YV31	45YV26	45YV21	45YV37	45YV49	45YV43
		2 ft	12 ga	—	45YV32	45YV27	45YV22	45YV38	45YV50	45YV44
		3 ft	12 ga	—	45YV33	45YV28	45YV23	45YV39	45YV51	45YV45
		4 ft	12 ga	—	45YV34	45YV29	45YV24	45YV40	45YV52	45YV46
5 ft		12 ga	—	45YV35	—	—	45YV41	45YV53	45YV47	
10 ft		12 ga	2HAL8	—	5YB79	4A974	—	45YV54	2HAL9	
20 ft		12 ga	3ULX2 *	—	3ULW9	—	—	—	—	
1 ft		14 ga	—	45YV65	45YV60	45YV55	45YV71	45YV83	45YV77	
1 ft 6 in		14 ga	—	45YV66	45YV61	45YV56	45YV72	45YV84	45YV78	
1½ in x 1¾ in	2 ft	14 ga	—	45YV67	45YV62	45YV57	45YV73	45YV85	45YV79	
	3 ft	14 ga	—	45YV68	45YV63	45YV58	45YV74	45YV86	45YV80	
	4 ft	14 ga	—	45YV69	45YV64	45YV59	45YV75	45YV87	45YV81	
	5 ft	14 ga	—	45YV70	—	—	45YV76	45YV88	45YV82	
	10 ft	14 ga	2HAN5	—	5YB80	5YB81	—	45YV89	2HAL3	
	20 ft	14 ga	3ULX3 *	—	3ULX1	—	—	—	—	
	Single Long Slotted Channel									
	1½ in x 1½ in	10 ft	12 ga	2HAN6	—	3ULW4	3ULW5	—	45YV18	3ULW8 *
	1½ in x 1¾ in	10 ft	14 ga	2HAN9	—	3ULW6	3ULW7	—	45YV19	—

Description	SILVER Item No.	GOLD Item No.	Description	SILVER Item No.	GOLD Item No.
Fittings and Brackets					
Angle Plate, 90°, 2-Hole	5YE32	2HAE9	Flat Plate, Corner, 3-Hole	2HAK4	2HAK1
Angle Plate, 90°, 3-Hole	2HAJ1	2HAF7	Flat Plate, Corner, 5-Hole, Webbed	5YEC9	2HAJ5
Angle Plate, 90°, 4-Hole	5YE33	2HAF2	Post Base Angled	2HZD7	—
Angle Bracket 90°, 3-Hole	5YE25	—	Post Base Squared	2HZD8	—
U Style with Plate	—	2HCJ4	2-Hole 90° Angle Plate w/Tabs	—	2HAE3
Z Style with Set Screw	—	2HCJ5	Angle Bracket, Long Adj. Slot	—	2HAE4
Notched Hold Down	—	2HCJ6	Angle Bracket, Short Adj. Slot	—	2HAE5
Strut Through Clamp, For 12-ga.	—	2HCJ7	45° Angle Fitting	—	2HAE6
Channel Z Bracket, For 12-ga.	5YB93	2HAU8	135° Angle Fitting	—	2HAE7
Channel Z Bracket, For 14-ga.	5YE46	2HAU9	Wing Shape Fitting, 3 Tabs	—	2HAE8
Channel U Bracket, For 12-ga.	5YE15	2HAU6	Wing Shape Fitting, Tab Left	—	2HAF1
Channel U Bracket, For 14-ga.	5YE48	2HAU7	Wing Shape Fitting, Tab Right	—	2HAF3
Flat Plate, Straight, 2-Hole	2HAJ7	2HAJ4	Wing Shape Fitting, 180° Tabs	—	2HAF5
Flat Plate, Straight, 3-Hole	5YE34	2HAF4	Channel Joiner Fitting, 4-Hole	2HAL1	2HAK7
Flat Plate, Straight, 4-Hole	5YE56	2HAJ8	Channel Joiner Strap	5YE17	—
Flat Plate Tee, 4-Hole	5YE23	2HAF6	Junction Box, 2-Angle Bracket	5YE24 *	—
Flat Plate Tee, 5-Hole, Webbed	5YE37	2HAJ2	Channel Cover	5YE42 *	2HAK2 *
Flat Plate Cross, 5-Hole	5YE35	2HAF8	End Cap for 1½" sq. Channel	2HAK9 †	—
			End Cap for 1½" x 1¾" Channel	2HAL4 †	—

Description	1/4"		3/8"		1/2"		1/4"		3/8"		1/2"	
	Item No.	Pkg. Qty.	Item No.	Pkg. Qty.	Item No.	Pkg. Qty.	Item No.	Pkg. Qty.	Item No.	Pkg. Qty.	Item No.	Pkg. Qty.
Hardware												
Spring Nuts, Silver, For 14-ga.	5YE44	25	5YE45	25	5YE43	25	—	—	2HAK3	50	4A987	25
Spring Nuts, Silver, For 12-ga.	5YE10	25	5YE11	25	4A985	25	—	—	2HAK6	100	—	—
Spring Nuts, SS, For 12-ga.	2HAL7	25	2HAN1	25	2HAN4	25	—	—	2HAF9 *	50	2HAF9 *	50
Springless Nuts, Silver	5YE28	25	5YE29	25	4A986	25	—	—	2HAP3 *	1	2HAP8 *	1
Channel Hex Nuts, Silver	5YE51	25	5YE52	25	5YE50	25	—	—	2HAR3 *	1	2HAR5 *	1
Channel Square Washer, Silver	5YE58	25	5YE59	25	5YE57	25	—	—	—	—	—	—
Channel Square Washer, Gold	2HAK5	25	2HAK8	25	2HAL2	25	—	—	2HCK1	1	2HCJ9	1
Square Washer, Stainless Steel	—	—	2HAP1	25	2HAP4	25	—	—	2HCK3	1	2HCK2	1
Trapnut, Gold	4KFU8 *	1	4KFU9 *	1	4KFV1 *	1	—	—	2HCJ8	1	—	—
							5YE54	25	5YE55	25	5YE53	25

Description	1/2 in		3/4 in		1 in		1 1/4 in		1 1/2 in		2 in		1/2"		3/8"		1"		1 1/4"		1 1/2"		2"		
	Item No.	Pkg. Qty.	Item No.	Pkg. Qty.	Item No.	Pkg. Qty.	Item No.	Pkg. Qty.	Item No.	Pkg. Qty.	Item No.	Pkg. Qty.	Item No.	Pkg. Qty.	Item No.	Pkg. Qty.	Item No.	Pkg. Qty.	Item No.	Pkg. Qty.	Item No.	Pkg. Qty.	Item No.	Pkg. Qty.	
Strut Straps/Clamps, Small Diameter																									
Universal Pipe Clamps, Silver	10	4A982	10	4A983	10	4A984	10	5YB98	10	5YB97	10	5YB99	—	—	—	—	—	—	—	—	—	—	—	—	—
Universal Pipe Clamps, Gold	10	—	10	—	10	—	10	—	10	—	10	—	—	—	—	—	—	—	—	—	—	—	—	—	
Rigid Pipe Straps, Stainless Steel	10	2HCH7	10	2HCH8	10	2HCH9	10	2HCJ1	10	2HCJ2	10	2HCJ3	10	2HAU5 *	—	—	—	—	—	—	—	—	—	—	—
Angler Pipe Clamps, Gold	10	2HAR9 *	10	2HAU1 *	10	2HAU2 *	10	2HAU3 *	10	2HAU4 *	10	—	—	—	—	—	—	—	—	—	—	—	—	—	—
Strut Straps/Clamps, Large Diameter																									
Clevis Hanger	—	—	1	—	—	—	2HCK4	—	2HCK5	—	2HCK6	—	—	—	—	—	—	—	—	—	—	—	—	—	—
Riser Clamp	—	—	—	—	—	—	2HCK8	—	—	—	2HCK9	—	—	—	—	—	—	—	—	—	—	—	—	—	—
Conduit Strap Clamp, Silver	—	—	—	—	—	—	—	—	—	5YB94	—	5YB95	—	—	—	—	—	—	—	—	—	—	—	—	—
Conduit Strap Clamp, Gold	—	—	—	—	—	—	—	—	—	2HAR4	—	2HAR6	—	—	—	—	—	—	—	—	—	—	—	—	—
Cushioned Pipe Clamps																									
O.D. Tubing Straps	—	—	—	—	—	—	2HCG6	—	2HCG9	—	2HCH1	—	2HCH2	—	—	—	—	—	—	—	—	—	—	—	—
Channel Cushioned Clamp	—	—	—	—	—	—	—	—	—	5YE22	—	—	—	—	—	—	—	—	—	—	—	—	—	—	—

* Superstrut brand. † Painted white.