



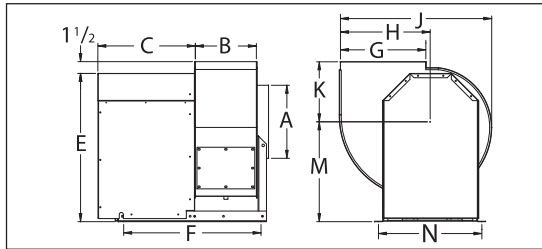
Utility Exhaust Blowers

- For spark-resistant industrial applications
- Aluminum wheel with shaft seal and rub ring

Scroll is clockwise rotation and can be rotated in 45° increments to 8 positions; shipped in upblast position. Units feature bolted access door and gray polyester coating. Weather hood included. All models are UL and C-UL Listed.

Note: Review OSHA Codes. OSHA complying guards required when fan blades are exposed and within reach of personnel.

WARNING: Use a hazardous location motor where flammable vapors are involved.



Direct-Drive—488V85 and 488V87 have electronically commutated (EC) motors for up to 70% energy savings. Potentiometer dial on motor allows speed control down to 80%. Internal or external mounting.

- UL-705 Listed for power ventilators
- Max. inlet temp.: 180°F
- Optional EC Control Kits 43Y140, 35YV92, and 35YV94 on page 2955

Belt-Drive—For commercial kitchen exhaust applications. 1" threaded drain connection point on bottom of blower. Fan motor and drive package components packed separately. Blower is only permissible for UL-762 applications when mounted on exterior of the building, scroll must remain in upblast position for proper grease draining.

- UL-762 Listed for Restaurant Exhaust Appliances (YZHW)
- Max. inlet air temp.: 300°F
- Max. ambient temp.: 104°F

Wheel Dia. (in.)	Shaft Dia. (in.)	Dimensions (in.)											MASON FLOOR-MOUNT VIBRATION ISOLATOR Item No.	MASON FLOOR-MOUNT SPRING ISOLATOR Item No.	
		A	B	C	E	F	G	H	J	K	M	N			
Direct-Drive															
11 1/8	—	11	9 1/2	9 1/2	25 3/32	19 3/16	11 3/64	11 3/64	19 1/64	10 11/16	18 4/64	12 3/64	4C955	5XR76	
15	—	15 3/4	10 3/16	9 1/2	25 3/32	19 3/64	15 5/64	15 5/64	27 3/64	13 35/64	18 4/64	12 3/64	4C876	5XR70	
Belt-Drive															
11 1/8	3/4	11 1/64	8 1/2	15 1/2	22 1/4	20 21/32	11 5/32	11 3/64	20 3/32	10 11/16	15 1/8	16 1/64	4C955	5XR76	
12 1/4	1	12 1/8	9 5/32	15 1/2	22 1/4	21 21/32	13 1/64	13 1/64	23 1/64	11 5/64	15 1/8	16 1/64	4C955	5XR76	
13 1/2	1	14 1/64	10 3/64	16 3/4	24 3/4	22 4/64	14 2/64	14 2/64	28 3/64	12 19/32	16 3/8	17 1/16	4C876	5XR70	
15	1 3/16	15 3/4	12 3/64	18 1/2	27 1/2	24 3/16	15 29/32	16 1/16	28 3/32	13 35/64	18 1/2	20 1/64	4C876	5XR70	
16 1/2	1 3/16	17 3/64	13 1/4	19 1/2	30	28 3/4	17 9/64	17 3/4	31	14 1/2	20 3/8	22 3/64	4C876	5XR70	
18 1/4	1 3/16	19 3/32	14 3/8	22	33 1/4	32 3/4	19 1/64	19 3/64	34 3/16	15 39/64	22 3/8	25 3/8	4C961	5XR70	
20	1 3/16	21	16	23 3/4	36 1/8	35 5/8	21 1/64	21 1/32	37 23/64	16 23/32	24 1/2	25 3/8	4C877	5XR72	
22 1/4	1 3/16	23 23/64	17 4/64	24	41 1/2	34 57/64	23 35/64	23 4/64	41 29/64	18 5/32	28 3/4	28 1/4	4C877	5XR72	
24 1/2	1 1/16	25 23/32	19 1/32	25	45 3/4	36 17/32	25 59/64	26 1/64	45 35/64	19 19/32	21 1/2	31 1/32	4C988	5XR72	
Wheel Dia. (in.)	0.250"	CFM Air Delivery @ Static Pressure Shown*				1.50"	Blower RPM	Motor HP	Sones @ 0.750" SP @ 5 ft.	Motor	Speed Control	Open Dripproof 1-Phase Motor 115V, 60 Hz Item No.			
Direct-Drive, With EC Motor															
11 1/8 in	683	443	709	979	—	1050	1/2 hp	—	1,800	43Y140	488V85				
	1033	875	1109	—	—	1400	—	—	—	—	—				
	1358	1238	—	—	—	1750	—	—	—	—	—				
15 in	1215	793	1434	1097	1611	800	3/4 hp	—	1,800	43Y140	488V87				
	1950	1703	2257	2059	—	1125	—	—	—	—	—				
	2635	2448	—	—	—	1450	—	—	—	—	—				

Wheel Dia. (in.)	CFM Air Delivery @ Static Pressure Shown*						Blower RPM	Motor HP	Max. BHP†	COMPLETE WITH DRIVE PACKAGE**				WITHOUT DRIVE PACKAGE** Item No.	
	0.250"	0.500"	0.750"	1.00"	1.50"	3.00"				Open Dripproof 1-Phase Motor 115/230V, 60 Hz Item No.	Hazardous Location 1-Phase Motor 115/230V, 60 Hz Item No.	Open Dripproof 3-Phase Motor 230/460V, 60 Hz Item No.	Hazardous Location 3-Phase Motor 230/460V, 60 Hz Item No.		
Belt-Drive															
11 1/8 in	893	836	771	696	518	—	2048	1/4 hp	0.25 hp	7DG05	—	7DG06	—	488V75	
	989	938	882	819	674	494	—	2246	1/2 hp	0.33 hp	7DG07	—	7DG08		—
	1151	1106	1061	1011	899	769	—	2581	1/2 hp	0.5 hp	7DG09	—	7DG10		—
	1326	1288	1249	1209	1121	1018	778	2949	3/4 hp	0.75 hp	7DG11	—	—		—
	1467	1432	1397	1361	1284	1199	1,005	3245	1 hp	1.0 hp	7DG12	—	7DG13		—
	1015	893	737	—	—	—	—	1400	1/4 hp	0.15 hp	7DF95	7DF96	7DG01		—
	1246	1158	1047	922	—	—	—	1670	1/4 hp	0.25 hp	7DF97	7DF98	7DG02		—
	1383	1307	1215	1109	738	—	—	1833	1/2 hp	0.33 hp	7DF99	—	7DG03		7DF87
	1608	1542	1472	1389	1198	788	—	2103	1/2 hp	0.5 hp	7DG00	—	7DG04		—
	1861	1802	1744	1681	1528	1359	—	2408	3/4 hp	0.75 hp	7DF88	—	7DF89		—
2060	2005	1953	1900	1776	1629	1,237	2650	1 hp	1.0 hp	7DF90	—	7DF91	—		
2373	2323	2277	2232	2135	2024	1,764	3033	1 1/2 hp	1.5 hp	7DF92	—	7DF93	—		
2628	2582	2539	2498	2415	2322	2,100	3346	2 hp	2.0 hp	—	—	7DF94	—		
12 1/4 in	1597	1495	1376	1226	—	—	1643	1/2 hp	0.33 hp	7HT17	—	7HT18	—	488V77	
	1862	1783	1683	1578	1296	—	1889	1/2 hp	0.5 hp	7HT19	—	7HT20	—		
	2151	2081	2004	1917	1715	1448	—	2159	3/4 hp	0.75 hp	7HT21	—	7HT22		—
	2379	2311	2253	2172	2013	1806	1,024	2373	1 hp	1.0 hp	7HT23	—	7HT24		—
	2741	2681	2626	2574	2434	2293	1,928	2716	1 1/2 hp	1.5 hp	7HT25	—	7HT26		—
	3030	2976	2921	2875	2761	2635	2,335	2991	2 hp	1.98 hp	7HT27	—	—		—
13 1/2 in	1671	1509	1309	—	—	—	1261	1/4 hp	0.25 hp	7F966	7F967	7F968	—	488V78	
	1862	1720	1559	1351	—	—	1384	1/2 hp	0.33 hp	7F969	7F970	7F971	7F972		
	2176	2056	1926	1783	1296	—	—	1589	3/4 hp	0.5 hp	7F973	7F974	7F975		7F976
	2522	2419	2311	2196	1929	1395	—	1819	1 hp	0.75 hp	7F977	—	7F979		7F980
	2795	2703	2607	2507	2290	2011	—	2002	1 hp	1.0 hp	7F981	—	7F983		—
	3224	3145	3062	2979	2801	2607	2,015	2292	1 1/2 hp	1.5 hp	7F985	—	7F986		—
	3562	3491	3418	3342	3186	3018	2,618	2522	2 hp	2.0 hp	7A0U6	—	7F989		—
	4105	4042	3980	3915	3783	3645	3,347	2892	3 hp	3.0 hp	—	—	7A0U7		—
	2119	1926	1694	1268	—	—	—	1161	1/2 hp	0.33 hp	7HT32	7HT33	7HT34		7HT35
	2483	2322	2144	1933	—	—	—	1333	1/2 hp	0.5 hp	7HT36	7HT37	7HT38		7HT39
2885	2748	2602	2443	2044	—	—	1526	3/4 hp	0.75 hp	7HT40	7HT41	7HT42	7HT43		
3201	3078	2950	2814	2506	2007	—	1680	1 hp	1.0 hp	7HT44	7HT45	7HT46	7HT47		
3696	3591	3482	3368	3124	2847	—	1923	1 1/2 hp	1.5 hp	7HT48	—	7HT49	7HT50		
4087	3993	3894	3794	3584	3352	2,730	2116	2 hp	2.0 hp	7HT51	—	7HT52	7HT53		
4706	4623	4540	4453	4277	4091	3,670	2423	3 hp	3.0 hp	—	—	7HT54	—		

* Performance certified is for installation type B: free inlet, ducted outlet. † Power rating (BHP) does not include transmission losses. Performance ratings do not include the effects of aperturancs (accessories). The AMCA Certified ratings Seal applies to air performance ratings only. ‡ Motor is rated 208-230V. ** Drive package consists of appropriate motor, belt, and sheaves to obtain the performance listed.

CONTINUED