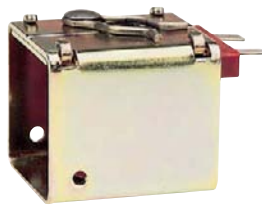


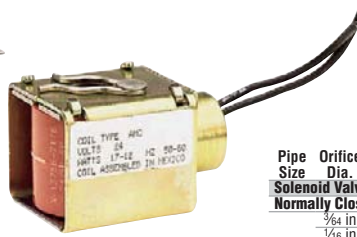
1-800-GRAINGER (472-4643)



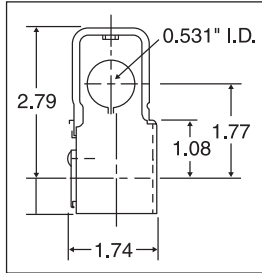
**Valve Coil
Key A
6X542**



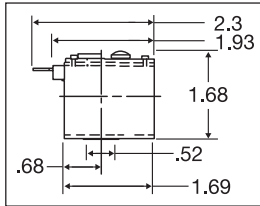
**Valve Coil
Key B
3A439**



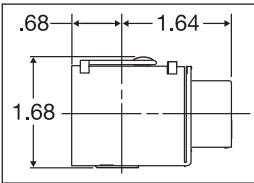
**Valve Coil
Key C
4A705**



**A.
Junction Box 7/8"
Dia. Conduit Hole**



**B.
1/4" Spade
Terminal**



**C.
1/2" Conduit
Connection**



Solenoid Valves and Valve Coils

Solenoid Valves—Feature 2-way design and have Buna N gaskets (do not exceed temperature limitations). To prevent backflow, add a check valve to the system (sold separately on page 2901). Valves that have OPD minimums beginning with 0 (e.g., 0 to 300 psi) are direct-acting and will open and close when line pressures are within minimum and maximum psi ranges. Valves that have OPD minimums starting at 2 or 5 (e.g., 5 to 150 psi) are designated pilot-operated and will open and close only if pressure differential between the inlet and outlet is within OPD ranges. Normally closed valves will open when energized. Normally open valves will close when energized. Meet Fluid Control Institute, Inc. and National Fluid Power Association (NFPA) standards. UL Listed and CSA Certified.

- Max. fluid temp.: 180°F
- Mount in any position

WARNING: Not for use in hazardous atmospheres.

Note: Maximum suggested cycling rate is 10 times per min.



**Solenoid
Valve
1A576**

Solenoid Valve Coils—For use with Dayton® solenoid valves on this page only. Continuous duty coils, for Class F, H, and B insulation with NEMA coil enclosure. Coils and valves, when assembled, are UL Listed. For steam valves, use Class H coil. 12 and 24VDC coils have integral pulse modulation circuit for the same OPD ratings as AC coils. CSA Certified, except 3PU19 and 3PU18 are UL Listed only.

WARNING: Not for use in hazardous atmospheres.

| Coil Insulation Class** | 120V AC Item No. | 12V DC Item No. | Voltage 208/240V AC Item No. | 24V AC Item No. | 24V DC Item No. |
|-----------------------------|------------------|-----------------|------------------------------|-----------------|-----------------|
| Solenoid Valve Coils | | | | | |
| A | F 6X543 | 3PU19 | 6X544 | 6X542 | 3PU18 |
| A | H 2A204 | — | 2A205 | 2A203 | — |
| B | B 3A440 | — | 3A441 | — | — |
| C | F 4A706 | — | 4A707 | 4A705 | — |
| B | F — | — | — | 3A439 | — |

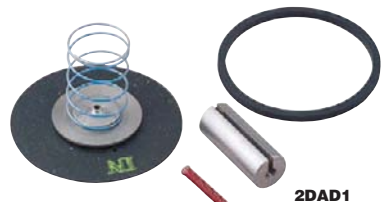
| Pipe Size | Orifice Dia. | Cv of Volume† | Min. Operating Pressure | Max. Operating Pressure Differential* | Safe Working Pressure | Item No. |
|---|--------------|---------------|-------------------------|---------------------------------------|-----------------------|----------|
| Solenoid Valve Less Coil | | | | | | |
| Normally Closed, Brass | | | | | | |
| 3/4 in | 0.05 | 0 | psi | 500 | psi | 2CZ23 |
| 1/8 in | 0.12 | 0 | psi | 500 | psi | 3A422 |
| 1/2 in | 0.22 | 0 | psi | 300 | psi | 1A574 |
| 1/2 in | 0.34 | 0 | psi | 150 | psi | 2CZ21 |
| 3/2 in | 0.48 | 0 | psi | 100 | psi | 2CZ25 |
| 3/2 in | 0.22 | 0 | psi | 300 | psi | 2CZ28 |
| 1/2 in | 0.34 | 0 | psi | 150 | psi | 1A575 |
| 3/2 in | 0.48 | 0 | psi | 100 | psi | 2CZ22 |
| 1/4 in | 0.7 | 0 | psi | 20 | psi | 2CZ29 |
| 1/4 in | 1.2 | 2 | psi | 200 | psi | 3A433 |
| 1/4 in | 1.2 | 2 | psi | 200 | psi | 4A699 |
| 3/8 in | 1.7 | 0 | psi | 10 | psi | 2CZ27 |
| 3/8 in | 2.2 | 2 | psi | 200 | psi | 4A700 |
| 1/2 in | 3.5 | 5 | psi | 250 | psi | 4A701 |
| 3/8 in | 2.8 | 0 | psi | 100 | psi | 4A697 |
| 3/8 in | 2.8 | 5 | psi | 150 | psi | 1A576 |
| 1/2 in | 3.5 | 5 | psi | 250 | psi | 3A435 |
| 1/2 in | 3.6 | 0 | psi | 100 | psi | 3A434 |
| 3/4 in | 3.6 | 5 | psi | 150 | psi | 1A577 |
| 3/4 in | 5.5 | 0 | psi | 100 | psi | 3A436 |
| 3/4 in | 5.5 | 5 | psi | 125 | psi | 1A578 |
| 1 in | 7.0 | 5 | psi | 250 | psi | 3A437 |
| 1 in | 13.0 | 5 | psi | 125 | psi | 1A579 |
| 1 in | 13.0 | 5 | psi | 250 | psi | 3A438 |
| 1 1/4 in | 16.0 | 5 | psi | 250 | psi | 1A580 |
| 1 1/2 in | 25.0 | 5 | psi | 250 | psi | 1A581 |
| Normally Closed, Stainless Steel | | | | | | |
| 1/8 in | 0.12 | 0 | psi | 500 | psi | 4A688 |
| 1/2 in | 0.22 | 0 | psi | 300 | psi | 3A423 |
| 3/2 in | 0.48 | 0 | psi | 100 | psi | 4A690 |
| 3/4 in | 0.05 | 0 | psi | 500 | psi | 4A691 |
| 1/8 in | 0.12 | 0 | psi | 500 | psi | 3A425 |
| 3/2 in | 0.22 | 0 | psi | 300 | psi | 4A692 |
| 1/4 in | 0.34 | 0 | psi | 150 | psi | 2A195 |
| 3/2 in | 0.48 | 0 | psi | 100 | psi | 3A431 |
| 3/8 in | 0.56 | 0 | psi | 60 | psi | 4A693 |
| 1/4 in | 0.7 | 0 | psi | 20 | psi | 3A432 |
| Normally Open, Stainless Steel | | | | | | |
| 1/8 in | 0.09 | 0 | psi | 150 | psi | 3A424 |
| 3/2 in | 0.17 | 0 | psi | 75 | psi | 3A428 |

Solenoid Valve Rebuild Kits

Replacement parts for Dayton solenoid valves. All come with plunger assembly, gasket, spring, and instructions. See Grainger.com for a complete listing of kit contents.

| Description | For Use With | Item No. |
|------------------------|---|----------|
| Diaphragm Assembly | 3A434, 3A436, 4A697 | 2DA05 |
| | 1A576, 1A577 | 2DA06 |
| | 1A582, 1A583, 4A776 | 2DAC9 |
| | 1A578 | 2DAD1 |
| | 1A579 | 2DAD2 |
| | 4A694, 4A695 | 2DAD3 |
| | 4A696 | 2DAD4 |
| | 2CZY8, 2CZY9, 3A426, 3A429 | 2DAA3 |
| | 1A574, 2CZ21, 2CZ23, 2CZ25, 3A422, 3A423, 4A688, 4A689, 4A690 | 2DAA4 |
| | 2CZ26 | 2DAA7 |
| 2CZ27 | 2DAA8 | |
| O-Ring, Spanner Wrench | 1A575, 2A195, 2A196, 3A425, 3A431, 4A691, 4A692, 4A693 | 2DAA9 |
| | 2CZ22, 2CZ28, 2CZ29, 3A432 | 2DAB1 |
| | 2A194, 4A703, 4A704 | 2DAB4 |
| | 3A427, 3A430 | 2DAB5 |
| | 3A424, 3A428 | 2DAC8 |
| | 2A197, 2CZ24, 2DAA1 | 2DAD5 |

| Description | For Use With | Item No. |
|------------------------------|---------------------|----------|
| Piston Assembly, Piston Ring | 2DAA2 | 2DAB2 |
| | 3A433, 4A699, 4A700 | 2DAB3 |
| | 2A198, 4A702 | 2DAB6 |
| | 2A199 | 2DAB7 |
| | 2A200 | 2DAB8 |
| | 2A201 | 2DAB9 |
| | 2A202 | 2DAC1 |
| | 3A435, 4A701 | 2DAC2 |
| | 3A437 | 2DAC3 |
| | 3A438 | 2DAC4 |
| Piston Assembly, Piston Ring | 1A580 | 2DAC5 |
| | 1A581 | 2DAC6 |
| | 4A715 | 2DAC7 |



2DAD1



2DAA3

Sign in to **Grainger.com**® to see **YOUR Pricing** and **MORE**