



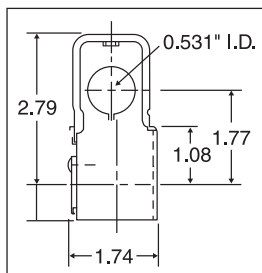
**Valve Coil
Key A
6X542**



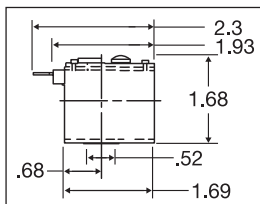
**Valve Coil
Key B
3A439**



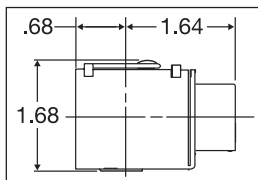
**Valve Coil
Key C
4A705**



**A.
Junction Box 7/8"
Dia. Conduit Hole**



**B.
1/4" Spade
Terminal**



**C.
1/2" Conduit
Connection**



Solenoid Valves and Valve Coils

Solenoid Valves—Feature 2-way design and have Buna N gaskets (do not exceed temperature limitations). To prevent backflow, add a check valve to the system (sold separately on page 2777). Valves that have operating pressure differential (OPD) minimums beginning with 0 (e.g., 0 to 300 psi) are direct-acting and will open and close when line pressures are within minimum and maximum psi ranges. Valves that have OPD minimums starting at 2 or 5 (e.g., 5 to 150 psi) are designated pilot-operated and will open and close only if pressure differential between the inlet and outlet is within OPD ranges. Normally closed valves will open when energized. Normally open valves will close when energized. Meet Fluid Control Institute, Inc. and National Fluid Power Association (NFPA) standards. UL Listed and CSA Certified.

- Max. fluid temp.: 180°F
- Mount in any position

WARNING: Not for use in hazardous atmospheres.

Note: Maximum suggested cycling rate is 10 times per min.



**Solenoid Valve
Less Coil
4A700**

Solenoid Valve Coils—For use with Dayton solenoid valves on this page only. Continuous duty coils, for Class F, H, and B insulation with NEMA coil enclosure. Coils and valves, when assembled, are UL Listed. For steam valves, use Class H coil. 12 and 24VDC coils have integral pulse modulation circuit for the same OPD ratings as AC coils. CSA Certified, except 3PU19 and 3PU18 are UL Listed only.

WARNING: Not for use in hazardous atmospheres.

Coil Insulation Class**	120V AC Item No.	12V DC Item No.	Voltage 208/240V AC Item No.	24V AC Item No.	24V DC Item No.
Solenoid Valve Coils					
A F	6X543	3PU19	6X544	6X542	3PU18
A H	2A204	—	2A205	2A203	—
B B	3A440	—	3A441	—	—
C F	4A706	—	4A707	4A705	—
B F	—	—	—	3A439	—

† Coefficient of Volume (Cv): the amount of water in gpm at standard connections (60°F, specific gravity = 1) which will pass through the valve with a 1 psi pressure drop and the valve in the full-open position.

**NEMA Class F (311°F), Class H (356°F), Class B (266°F).

Pipe Size	Orifice Dia.	Cv of Volume†	Min. Operating Pressure Differential	Max. Operating Pressure Differential Air/Inert Gas	Safe Working Water Pressure	Item No.
Solenoid Valve Less Coil						
Normally Closed, Brass						
1/8 in	3/64 in	0.05	0 psi	500 psi	500 psi	2C223
	1/16 in	0.12	0 psi	500 psi	500 psi	3A422
	3/32 in	0.22	0 psi	300 psi	500 psi	1A574
	1/8 in	0.34	0 psi	150 psi	500 psi	2C221
1/4 in	3/32 in	0.48	0 psi	100 psi	500 psi	2C225
	1/8 in	0.22	0 psi	300 psi	500 psi	2C228
	1/8 in	0.34	0 psi	150 psi	500 psi	1A575
	1/4 in	0.48	0 psi	100 psi	500 psi	2C222
3/8 in	1/4 in	0.7	0 psi	20 psi	500 psi	2C229
	1/4 in	1.2	2 psi	200 psi	350 psi	3A433
	1/4 in	1.2	2 psi	200 psi	350 psi	4A699
	3/8 in	1.7	0 psi	10 psi	500 psi	2C227
1/2 in	3/8 in	2.2	2 psi	200 psi	350 psi	4A700
	1/2 in	3.5	5 psi	250 psi	300 psi	4A701
	3/4 in	2.8	0 psi	100 psi	300 psi	4A697
	3/4 in	2.8	5 psi	150 psi	300 psi	1A576
3/4 in	1/2 in	3.5	5 psi	250 psi	300 psi	3A435
	3/4 in	3.6	0 psi	100 psi	300 psi	3A434
	3/4 in	3.6	5 psi	150 psi	300 psi	1A577
	3/4 in	5.5	0 psi	100 psi	300 psi	3A436
1 in	3/4 in	5.5	5 psi	125 psi	300 psi	1A578
	1 in	7.0	5 psi	250 psi	300 psi	3A437
	1 in	13.0	5 psi	125 psi	250 psi	1A579
	1 1/2 in	13.0	5 psi	250 psi	300 psi	3A438
1 1/4 in	1 1/4 in	16.0	5 psi	250 psi	300 psi	1A580
	1 1/2 in	25.0	5 psi	250 psi	300 psi	1A581
Normally Closed, Stainless Steel						
1/8 in	3/64 in	0.12	0 psi	500 psi	500 psi	4A688
	1/16 in	0.22	0 psi	300 psi	500 psi	3A423
	3/32 in	0.48	0 psi	100 psi	500 psi	4A690
	3/64 in	0.05	0 psi	500 psi	500 psi	4A691
1/4 in	1/8 in	0.12	0 psi	500 psi	500 psi	3A425
	3/32 in	0.22	0 psi	300 psi	500 psi	4A692
	1/4 in	0.34	0 psi	150 psi	500 psi	2A195
	3/8 in	0.48	0 psi	100 psi	500 psi	3A431
3/8 in	1/2 in	0.56	0 psi	60 psi	500 psi	4A693
	1/4 in	0.7	0 psi	20 psi	500 psi	3A432
Normally Open, Stainless Steel						
1/4 in	1/16 in	0.09	0 psi	150 psi	500 psi	3A424
	3/32 in	0.17	0 psi	75 psi	500 psi	3A428

Voltage	Pipe Size NPT	VA	VA	Inrush Holding Watts
Solenoid Valve Coils				
12VDC	All	60	5	4.0
	1/8"	23	19	9.0
	1/4"	28	19	9.0
	3/8", 1/2", 3/4"	57	19	8.5
120VAC	1"	29	19	8.5
	1-1/4", 1-1/2"	23	19	9.0
	1/8"	26	19	9.0
	1/4"	29	19	9.0
208/240VAC	3/8", 1/2", 3/4"	60	24	10.6
	1"	31	24	10.6
	1-1/4", 1-1/2"	31	19	9.0
	1/8"	26	18	8.3
24VAC	1/4"	30	18	8.3
	3/8", 1/2", 3/4"	53	16	7.5
	1"	27	16	7.5
	1-1/4", 1-1/2"	24	18	8.3
24VDC	All	48	4	4.0

Solenoid Valve Rebuild Kits

Replacement parts for Dayton solenoid valves. All come with plunger assembly, gasket, spring, and instructions. See Grainger.com for a complete listing of kit contents.

Description	For Use With	Item No.
Diaphragm Assembly	3A434, 3A436, 4A697	2DAA5
	1A576, 1A577	2DAA6
	1A582, 1A583, 4A776	2DAC9
	1A578	2DAD1
	1A579	2DAD2
	4A694, 4A695	2DAD3
	4A696	2DAD4
	2CZY8, 2CZY9, 3A426, 3A429	2DAA3
	1A574, 2CZ21, 2CZ23, 2CZ25, 3A422, 3A423, 4A688, 4A689, 4A690	2DAA4
	2CZ26	2DAA7
O-Ring, Spanner Wrench	2CZ27	2DAA8
	1A575, 2A195, 2A196, 3A425, 3A431, 4A691, 4A692, 4A693	2DAA9
	2CZ22, 2CZ28, 2CZ29, 3A432	2DAB1
	2A194, 4A703, 4A704	2DAB4
	3A427, 3A430	2DAB5
	3A424, 3A428	2DAC8
	2A197, 2CZ24, 2DAA1	2DAD5
	2DAA2	2DAB2
	3A433, 4A699, 4A700	2DAB3
	2A198, 4A702	2DAB6
Piston Assembly, Piston Ring	2A199	2DAB7
	2A200	2DAB8
	2A201	2DAB9
	3A435, 4A701	2DAC2
	3A437	2DAC3
	3A438	2DAC4
	1A580	2DAC5
	1A581	2DAC6
	4A715	2DAC7
	2DAA2	2DAB2



2DAA3