



Find more Air Cylinders at Grainger.com®

Double-Acting Stainless Steel Body Air Cylinders

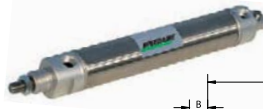
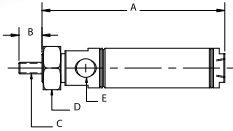


- Operating pressure range: 8 to 250 psi
- Operating temp. range: 40° to 140°F
- Include magnetic piston for use with autoswitches

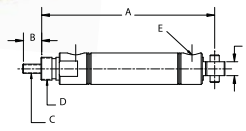
Permanently lubricated, nonrepairable cylinders are dimensionally interchangeable with a variety of manufacturers' cylinders. Stainless steel tube and chrome-plated carbon steel piston rod improve corrosion resistance. Piston magnet allows autoswitches to sense stroke piston. NPT ports. Additional sizes, switches, and brackets available on Grainger.com®.



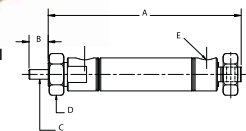
Nose Mount



Rear Pivot Mount



Double End Mount



Bore Dia.	A (+ Stroke)	B	C	D	E
1/16	2.36"	0.5	10-32	1/16-20	10-32
3/16	2.19"	0.5	10-32	1/16-20	10-32
1/4	2.97"	0.5	1/4-28	3/8-18	1/2 NPT
3/8	2.69"	0.5	1/4-28	3/8-18	1/2 NPT
1/2	3.25"	0.5	5/16-24	3/8-18	1/2 NPT
3/4	3.75"	0.75	1/2-20	3/4-16	1/2 NPT
1	3.69"	0.75	1/2-20	3/4-16	1/2 NPT
2	4.69"	0.88	1/2-20	1 1/4-12	1/4 NPT

Bore Dia.	A (+ Stroke)	B	C	D	E	F
7/16	2.81"	0.5	10-32	7/16-20	10-32	0.31
9/16	2.56"	0.5	10-32	7/16-20	10-32	0.31
3/4	3.75"	0.5	1/4-28	5/8-18	1/8" NPT	0.38
7/8	3.31"	0.5	1/4-28	5/8-18	1/8" NPT	0.38
1-1/16	3.84"	0.5	5/16-24	5/8-18	1/8" NPT	0.38
1-1/4	4.47"	0.75	7/16-20	3/4-16	1/8" NPT	0.5
1-1/2	4.38"	0.75	7/16-20	3/4-16	1/8" NPT	0.62

Bore Dia.	A (+ Stroke)	B	C	D	E
7/16	3.06"	0.5	10-32	7/16-20	10-32
9/16	2.75"	0.5	10-32	7/16-20	10-32
3/4	4.03"	0.5	1/4-28	5/8-18	1/8" NPT
7/8	3.59"	0.5	1/4-28	5/8-18	1/8" NPT
1-1/16	4.12"	0.5	5/16-24	5/8-18	1/8" NPT
1-1/4	4.87"	0.75	7/16-20	3/4-16	1/8" NPT
1-1/2	4.5"	0.75	7/16-20	3/4-16	1/8" NPT
2	6.06"	0.88	1/2-20	1-1/4-12	1/4 NPT

Bore Dia.	Stroke	DOUBLE-ACTING NOSE MOUNT				DOUBLE-ACTING REAR PIVOT				DOUBLE-ACTING DOUBLE END			
		Item No.	Item No.	Item No.	Item No.	Item No.	Item No.	Item No.	Item No.	Item No.	Item No.	Item No.	Item No.
1/2 in	1/2	5TGA2	5TGP6	5THD5	5TGC4	5TGR8	5THF7	5TGD6	5TGU0	5THF9	1/2 in	5THH1	5TGE8
1 in	1	5TGA3	5TGP7	5THD6	5TGC5	5TGR9	5THF8	5TGD7	5TGU1	5THG0	1 in	5THH2	5TGE9
2 in	2	5TGA4	5TGP8	5THD7	5TGC6	5TGT0	5THF9	5TGD8	5TGU2	5THG1	2 in	5THH3	5TGF0
3 in	3	5TGA5	5TGP9	5THD8	5TGC7	5TGT1	5THF0	5TGD9	5TGU3	5THG2	3 in	5THH4	5TGF1
4 in	4	5TGA6	5TGR0	5THD9	5TGC8	5TGT2	5THF1	5TGE0	5TGU4	5THG3	4 in	5THH5	5TGF2
5 in	5	5TGA7	5TGR1	5THE0	5TGC9	5TGT3	5THF2	5 in	5TGE1	5TGU5	5 in	5THH6	5TGF3
6 in	6	5TGA8	5TGR2	5THE1	6 in	5TGD0	5TGT4	5THF3	6 in	5TGE2	5TGU6	5THG4	5TGF4
7 in	7	5TGA9	5TGR3	5THE2	7 in	5TGD1	5TGT5	5THF4	7 in	5TGE3	5TGU7	5THG5	5TGF5
8 in	8	5TGC0	5TGR4	5THE3	8 in	5TGD2	5TGT6	5THF5	8 in	5TGE4	5TGU8	5THG6	5TGF6
9 in	9	5TGC1	5TGR5	5THE4	9 in	5TGD3	5TGT7	5THF6	9 in	5TGE5	5TGU9	5THG7	5TGF7
10 in	10	5TGC2	5TGR6	5THE5	10 in	5TGD4	5TGT8	5THF7	10 in	5TGE6	5TGV0	5THG8	5TGF8
12 in	12	5TGC3	5TGR7	5THE6	12 in	5TGD5	5TGT9	5THF8	12 in	5TGE7	5TGV1	5THH0	5TGF9

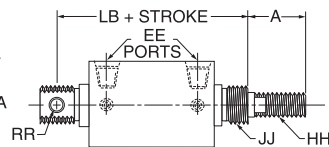
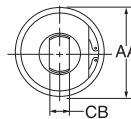
Repairable Round-Body Aluminum Air Cylinders

- Double-acting
- Max. operating pressure: 150 psi (10 bar)
- Operating temp. range: -10° to 165°F

Corrosion- and abrasion-resistant hard anodized aluminum cylinders have a high-strength steel retaining ring that is easily removed for maintenance and repair. Chrome-plated steel rod. Head and caps are sealed with an O-ring static tube seal to prevent leaks. All cylinders come "switch ready".



D8463



Bore Dia.	Dimensions (in.)				RR	JJ	HH	AA	CB
	A	LB	EE	RR					
1 1/2"	7/8	4 3/8	1/2	1/4	3/4-16	3/8-16	1 3/8	3/8	
1 1/2"	1 1/4	5 3/8	1/4	5/16	1-14	1/2-13	1 3/4	1/2	
2"	1 1/4	5 3/8	1/4	5/16	1-14	5/8-11	2 1/4	1/2	
2 1/2"	1 1/2	6 3/8	3/8	3/16	1 3/8-12	3/4-10	2 3/4	5/8	
3"	1 1/2	6 3/8	3/8	3/16	1 3/8-12	3/4-10	3 1/4	5/8	
4"	1 7/8	8 1/16	1/2	1/2	1 3/4-12	1-14	4 3/8	3/4	

Mount Type	Fits	Item No.
Clevis Bracket	1 1/2 in Bore	5VNY2
	1 in Bore, 2 in Bore	5VNY3
	2 1/2 in Bore, 3 in Bore	5VNY4
Cylinder Mounting Nut	4 in Bore	5VNY5
	1 1/2 in Bore	5VNW9
	1 1/2 in Bore, 2 in Bore	5VNX0
Flange Bracket	2 1/2 in Bore, 3 in Bore	5VNX1
	4 in Bore	5VNX2
	1 1/2 in Bore	5VNX7
Foot Bracket	1 1/2 Bore, 2 in Bore	5VNX8
	2 1/2 in Bore, 3 in Bore	5VNX9
	4 in Bore	5VNY0
Rod Clevis	1 1/2 in Bore	5VNX3
	1 in Bore	5VNX4
	2 1/2 in Bore, 3 in Bore	5VNX5
Rod Clevis	4 in Bore	5VNX6
	1 1/2 in Bore	5VNY1
	1 in Bore	5VNW5
	2 in Bore	5VNW6
	2 1/2 and 3 in Bore	5VNW7
	4 in Bore	5VNW8

Bore Dia.	Rod Thread Size	Stroke	WITHOUT CUSHION Item No.	WITH HEAD AND CAP CUSHION Item No.
1 1/2 in	3/8"-16	1 in, 1 1/2 in, 2 in, 2 1/2 in, 3 in, 3 1/2 in, 4 in	D8463	—
		3 in, 3 1/2 in, 4 in	—	D8496
	3/8"-16	5 in, 6 in, 7 in, 8 in	D8464	D8497
		9 in, 10 in, 11 in, 12 in	D8465	D8498
	1/2"-13	13 in, 14 in, 15 in, 16 in, 17 in, 18 in	D8466	D8499
		19 in, 20 in, 21 in, 22 in, 23 in, 24 in	D8467	D8501
1 1/2 in	1/2"-13	1 in, 1 1/2 in, 2 in, 2 1/2 in, 3 in, 3 1/2 in, 4 in	D8468	—
		3 in, 3 1/2 in, 4 in	—	D8502
	1/2"-13	5 in, 6 in, 7 in, 8 in	D8469	D8503
		9 in, 10 in, 11 in, 12 in	D8471	D8504
	1/2"-13	13 in, 14 in, 15 in, 16 in, 17 in, 18 in	D8472	D8505
		19 in, 20 in, 21 in, 22 in, 23 in, 24 in	D8473	D8506
2 in	5/8"-11	1 in, 1 1/2 in, 2 in, 2 1/2 in, 3 in, 3 1/2 in, 4 in	D8474	—
		3 in, 3 1/2 in, 4 in	—	D8507
	5/8"-11	5 in, 6 in, 7 in, 8 in	D8475	D8508
		9 in, 10 in, 11 in, 12 in	D8476	D8509
	5/8"-11	13 in, 14 in, 15 in, 16 in, 17 in, 18 in	D8477	D8511
		19 in, 20 in, 21 in, 22 in, 23 in, 24 in	D8478	D8512
2 1/2 in	3/4"-10	1 in, 1 1/2 in, 2 in, 2 1/2 in, 3 in, 3 1/2 in, 4 in	D8479	—
		3 in, 3 1/2 in, 4 in	—	D8513
	3/4"-10	5 in, 6 in, 7 in, 8 in	D8481	D8514
		9 in, 10 in, 11 in, 12 in	D8482	D8515
	3/4"-10	13 in, 14 in, 15 in, 16 in, 17 in, 18 in	D8483	D8516
		19 in, 20 in, 21 in, 22 in, 23 in, 24 in	D8484	D8517
3 in	3/4"-10	1 in, 1 1/2 in, 2 in, 2 1/2 in, 3 in, 3 1/2 in, 4 in	D8485	—
		3 in, 3 1/2 in, 4 in	—	D8518
	3/4"-10	5 in, 6 in, 7 in, 8 in	D8486	D8519
		9 in, 10 in, 11 in, 12 in	D8487	D8521
	3/4"-10	13 in, 14 in, 15 in, 16 in, 17 in, 18 in	D8488	D8522
		19 in, 20 in, 21 in, 22 in, 23 in, 24 in	D8489	D8523
4 in	1"-14	1 in, 1 1/2 in, 2 in, 2 1/2 in, 3 in, 3 1/2 in, 4 in	D8491	—
		3 in, 3 1/2 in, 4 in	—	D8524
	1"-14	5 in, 6 in, 7 in, 8 in	D8492	D8525
		9 in, 10 in, 11 in, 12 in	D8493	D8526
	1"-14	13 in, 14 in, 15 in, 16 in, 17 in, 18 in	D8494	D8527
		19 in, 20 in, 21 in, 22 in, 23 in, 24 in	D8495	D8528