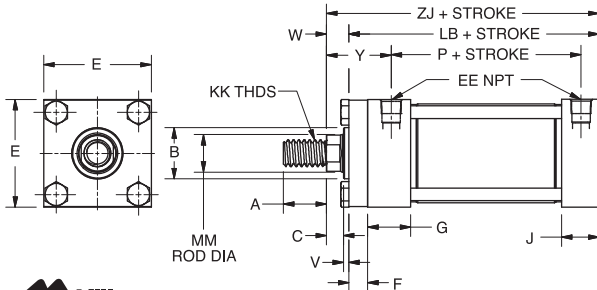




**4Z630**



## Hydraulic Cylinders

- Max. pressure: 2500 psi
- Temp. range: -20° to 160°F
- All-steel construction with black finish
- Modular mounting design

6", 8", 10", and 12" stroke cylinders have adjustable cushions on both ends. Piston rods are case hardened and hard chrome plated to resist mechanical damage. Urethane rod seal and nitrile piston seals are compatible with standard hydraulic fluids. Optional magnetic piston will actuate Position Sensors 4YRD6 or 4YRD7.

Note: Compact Hydraulic Cylinders available on Grainger.com®.

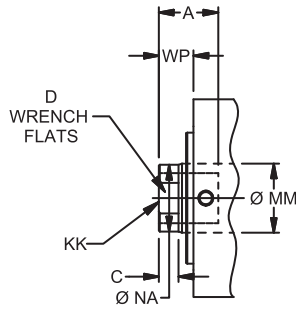
Bore Dia.	Dimensions (in.)															
	A	B	C	E	EE	F	G	J	KK	LB	MM	P	V	W	Y	ZJ
1 1/2 in	3/4	1 1/8	3/8	2 1/2	3/8	3/8	1 3/4	1 1/2	1/16-20	5	3/8	2 1/8	1/4	3/8	2	5 1/2
2 in	1 1/8	1 1/2	3/8	3 1/2	3/8	1 3/4	1 1/2	3/4-16	5 1/4	1	2 1/8	1/4	3/4	2 3/8	6	
2 1/2 in	1 1/8	1 1/2	1/2	3 1/2	1/2	3/4	1 3/4	1 1/2	3/4-16	5 3/4	1	3	1/4	3/4	2 3/8	6 1/2
3 1/4 in	1 1/8	2	3/8	4 1/2	3/4	3/4	2	1 1/4	1-14	6 1/4	1 3/8	3 1/2	1/4	7/8	2 3/4	7 1/2
4 in	2	2 3/8	3/4	5	3/4	7/8	2	1 1/4	1 1/4-12	6 3/4	1 3/4	3 3/4	1/4	1	3	7 3/4

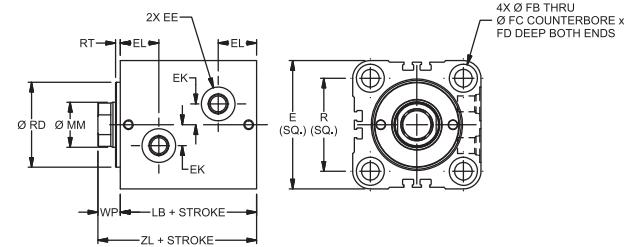
Bore Dia.	Stroke Length	WITH MAGNETIC PISTON		Bore Dia.	Stroke Length	WITH MAGNETIC PISTON	
		REGULAR Item No.	Item No.			REGULAR Item No.	Item No.
1 1/2"	1 in	4Z630	—	2 in	4Z648	—	—
	2 in	4Z631	—	4 in	4Z649	4YRC5	—
	3 in	4Z632	4YRA2	6 in	4Z650	4YRC6	—
	4 in	4Z633	4YRA3	8 in	4Z651	4YRC7	—
	6 in	4Z634	4YRA4	10 in	4Z652	4YRC8	—
2"	8 in	4Z635	4YRA5	12 in	4Z653	4YRC9	—
	1 in	4Z636	—	2 in	4Z654	—	—
	2 in	4Z637	—	4 in	4Z655	4YRD1	—
	4 in	4Z638	4YRA6	6 in	4Z656	4YRD2	—
	6 in	4Z639	4YRA7	8 in	4Z657	4YRD3	—
2 1/2"	8 in	4Z640	4YRA8	10 in	4Z658	4YRD4	—
	10 in	4Z641	4YRA9	12 in	4Z659	4YRD5	—
	1 in	4Z642	—	—	—	—	—
	2 in	4Z643	—	—	—	—	—
	4 in	4Z644	4YRC1	—	—	—	—
3"	6 in	4Z645	4YRC2	—	—	—	—
	8 in	4Z646	4YRC3	—	—	—	—
	10 in	4Z647	4YRC4	—	—	—	—

Function	Item No.
Position Sensors for Cylinders - Tie Rod Mounted	
Normally Open or Normally Closed PNP	4YRD6
Normally Open or Normally Closed NPN	4YRD7
Required Power Cord for Position Sensors, 16 ft.	
Power Supply/Signal Cordset	4YRD8

Bore Dia.	FRONT OR REAR FLANGE		EYE BRACKET	ROD CLEVIS
	Item No.	Item No.		
1 1/2"	1A329	1A331	1A344	1A345
2"	1A332	1A334	—	—
2 1/2"	1A335	1A337	1A346	1A347
3 1/4"	1A338	1A340	1A348	1A349
4"	1A341	1A343	1A350	1A351



**2XKK7**



## Compact Hydraulic Cylinders

- Temp. range: -10° to 165°F
- Aluminum body and piston

Almost half the length of comparable bore and stroke tie rod construction products. Piloted rod gland with long bearing area allows precise alignment of cylinder and load center lines. Standard SAE O-ring ports make leak-free hydraulic line connections.

### POSITIONING SENSORS

- Max. switching current: 100mA

Cost-effective alternative to machine-mounted switches for providing accurate indication of load position. Low-profile design keeps switch within compact cylinder body envelope. Solid-state switches use GMR technology to ensure precision, reducing hysteresis characteristics.

Bore Dia. (mm)	Dimensions (mm)																		
	MM	A	C	D	E	EE (SAE)	EK	EL	FB	FC	FD	KK	NA	R	RD	RT	WP	LB	ZL
20 mm	12	10	6	10	43	#2	6	16.5	5.5	9.5	5.4	3/16-24	11	30	24	3	11	43	54
25 mm	14	12	6	12	49	#2	8	17.5	5.5	9.5	5.4	3/16-24	13	36	27	3	11	45	56
32 mm	18	15	8	15	62	#4	11	20.5	7	11	6.5	1/8-20	17	47	36	3	13	51	64
40 mm	22	20	8	19	70	#4	12	21	9	14	8.6	3/16-18	21	52	43	3	13	55	68
50 mm	28	24	9	24	80	#4	14	22.5	11	17.5	10.8	3/16-16	27	58	53	3	14	60	74
63 mm	36	30	11	32	94	#4	17	26	13.5	20	13	1/4-14	35	69	66	3	16	67	83

Bore Dia.	Stroke Length	Max. Pressure	Retracted Length	Mfr. Model		Item No.
				Model	Model	
20 mm	10 mm	2,030 psi	64 mm	20	TNCH3T9A x 10.00	2XKK7
	25 mm	2,030 psi	79 mm	20	TNCH3T9A x 25.00	2XKK8
	50 mm	2,030 psi	104 mm	20	TNCH3T9A x 50.00	2XKK9
25 mm	10 mm	2,030 psi	66 mm	25	TNCH3T9A x 10.00	2XKL1
	25 mm	2,030 psi	81 mm	25	TNCH3T9A x 25.00	2XKL2
	50 mm	2,030 psi	106 mm	25	TNCH3T9A x 50.00	2XKL3
32 mm	10 mm	2,030 psi	74 mm	32	TNCH3T9A x 10.00	2XKL4
	25 mm	2,030 psi	89 mm	32	TNCH3T9A x 25.00	2XKL5
	50 mm	2,030 psi	114 mm	32	TNCH3T9A x 50.00	2XKL6
40 mm	80 mm	2,030 psi	144 mm	32	TNCH3T9A x 80.00	2XKL7
	100 mm	2,030 psi	164 mm	40	TNCH3T9A x 100.00	2XKL8
	25 mm	2,030 psi	93 mm	40	TNCH3T9A x 25.00	2XKL9
50 mm	50 mm	2,030 psi	118 mm	40	TNCH3T9A x 50.00	2XKN1
	80 mm	2,030 psi	148 mm	40	TNCH3T9A x 80.00	2XKN2
	100 mm	2,030 psi	168 mm	40	TNCH3T9A x 100.00	2XKN3
63 mm	25 mm	1,740 psi	99 mm	50	TNCH3T9A x 25.00	2XKN4
	50 mm	1,740 psi	124 mm	50	TNCH3T9A x 50.00	2XKN5
	80 mm	1,740 psi	154 mm	50	TNCH3T9A x 80.00	2XKN6
50 mm	100 mm	1,740 psi	174 mm	50	TNCH3T9A x 100.00	2XKN7
	25 mm	1,450 psi	108 mm	63	TNCH3T9A x 25.00	2XKN8
	50 mm	1,450 psi	133 mm	63	TNCH3T9A x 50.00	2XKN9
100 mm	1,450 psi	183 mm	63	TNCH3T9A x 100.00	2XKP1	

Function	Switching Voltage	Mfr. Model	Item No.
Position Indicating Switch, 32 to 125mm			
Normally Open NPN	10 to 30V DC	P8SAGNFAX	61RG47
Reed	10 to 30V AC/DC	P8SAGRFX	61RG48