

For Rotary Vane Air Motor Maintenance Kits, go to Grainger.com



Rotary Vane Air Motors

- Max. temp.: 250°F
- Variable speed

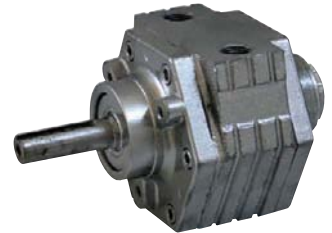
Use these compact, low-maintenance air motors in applications that would normally require similar, but more-expensive explosionproof electric motors. Can be operated in extreme temperatures. Cast-iron models include discharge muffler.

HP	Running Torque @ Max. Pressure	Max. Air Flow	No Load RPM	Shaft Dia.	Mounting	Port Size	Rotation*	Item No.
Cast-Iron Air Gearmotors								
0.32 hp	49 in-lb	21 cfm	400 RPM	½ in	Face	¼ in NPT	REV	22UX55
0.34 hp	62 in-lb	21 cfm	350 RPM	½ in	Face	¼ in NPT	REV	22UX82
0.64 hp	172 in-lb	20 cfm	110 RPM	¾ in	Base	¼ in NPT	CCW	22UX56
0.9 hp	256 in-lb	27 cfm	150 RPM	¾ in	Base	¼ in NPT	CCW	22UX57
1.25 hp	400 in-lb	60 cfm	200 RPM	1 in	Face and Foot	¼ in NPT	REV	22UX81
1.26 hp	274 in-lb	57.5 cfm	300 RPM	1 in	Face and Foot	¼ in NPT	REV	22UX54
Cast-Iron Air Motors								
0.45 hp	2.75 in-lb	20.5 cfm	10,000 RPM	¾ in	Hub	¼ in NPT	CCW	22UX71
	5.25 in-lb	27 cfm	6,000 RPM	¾ in	Hub	¼ in NPT	CW	22UX41
	5.25 in-lb	27 cfm	6,000 RPM	¾ in	Hub	¼ in NPT	REV	22UX42
0.93 hp	19.5 in-lb	30 cfm	3,000 RPM	¾ in	Hub	¼ in NPT	CCW	22UX43
	19.5 in-lb	30 cfm	3,000 RPM	¾ in	Flange	¼ in NPT	REV	22UX44
	19.5 in-lb	30 cfm	6,000 RPM	¾ in	Foot	¼ in NPT	REV	22UX72
1.7 hp	36 in-lb	78 cfm	3,000 RPM	¾ in	Face	¾ in NPT	REV	22UX45
	36 in-lb	78 cfm	3,000 RPM	¾ in	Flange	¼ in NPT	REV	22UX46
	36 in-lb	78 cfm	3,000 RPM	¾ in	Foot	¼ in NPT	REV	22UX73
4 hp	36 in-lb	78 cfm	3,000 RPM	¾ in	Foot	¼ in NPT	REV	22UX74
	36 in-lb	78 cfm	3,000 RPM	¾ in	Face	¼ in NPT	REV	22UX75
	84 in-lb	128 cfm	3,000 RPM	¾ in	Foot	½ in NPT	REV	22UX47
5.25 hp	84 in-lb	128 cfm	3,000 RPM	¾ in	Flange	½ in NPT	REV	22UX48
	84 in-lb	128 cfm	3,000 RPM	¾ in	Foot	½ in NPT	REV	22UX49
	84 in-lb	128 cfm	3,000 RPM	¾ in	Face	½ in NPT	REV	22UX76
9.5 hp	132 in-lb	175 cfm	2,500 RPM	¾ in	Foot	½ in NPT	REV	22UX50
	132 in-lb	175 cfm	2,500 RPM	¾ in	Flange	½ in NPT	REV	22UX51
	290 in-lb	275 cfm	2,000 RPM	1 ¼ in	Face and Foot	1 ¼ in NPT	REV	22UX52
Cast-Iron Oilless Air Motors								
0.42 hp	13.5 in-lb	30 cfm	2,000 RPM	½ in	Hub and Foot	¼ in NPT	CCW	22UX58
0.42 hp	13.5 in-lb	30 cfm	2,000 RPM	½ in	Hub and Foot	¼ in NPT	CW	22UX59
2.5 hp	78.75 in-lb	68 cfm	2,000 RPM	¾ in	Hub and Foot	½ in NPT	CW	22UX63
	78.75 in-lb	68 cfm	2,000 RPM	¾ in	Hub and Foot	½ in NPT	CCW	22UX62
Stainless Steel Air Motors								
0.45 hp	2.75 in-lb	20.5 cfm	10,000 RPM	¾ in	Face	¼ in NPT	REV	22UX65
1.7 hp	36 in-lb	78 cfm	3,000 RPM	¾ in	Face	¼ in NPT	REV	22UX67

* Clockwise (CW), Counterclockwise (CCW), Reversible (REV).



22UX55



22UX45



22UX58



Rotary Multivane Air Gearmotors

- Max. air pressure: 90 psi
- Max. temp.: 150°F

Provide higher torque at low speeds and continuous-duty forward or reverse operation. Keyed steel shafts with case-hardened gearing. Aluminum and steel construction.

HP	Running Torque @ Max. Pressure	Stall Torque	Max. Air Flow	No Load RPM	RPM @ Max. Torque	Shaft Dia.	Shaft Length	Keyway Length	Port Size	Gear Ratio	Overall Length	Outside Dia.	Mfr. Model	Item No.
Flange														
0.31 hp	99 in-lb	198 in-lb	18 cfm	280 RPM	140 RPM	¾ in	1 in	0.125 in	¼ in NPT	50:1	8.87 in	1.76 in	M004RVR050AR3	1AAG9
0.34 hp	330 in-lb	396 in-lb	18 cfm	85 RPM	42 RPM	¾ in	1 in	0.125 in	¼ in NPT	167:1	8.87 in	1.76 in	M004RVR167AR3	1AAG1
0.34 hp	71 in-lb	142 in-lb	18 cfm	450 RPM	225 RPM	¾ in	1 in	0.125 in	¼ in NPT	33:1	8.11 in	1.76 in	M004RVR033AR3	1AAG8
Face														
0.61 hp	612 in-lb	1,224 in-lb	33 cfm	94 RPM	47 RPM	¾ in	2.19 in	0.187 in	¼ in NPT	188:1	13.13 in	2.69 in	M007RVR188BR6	1AAG2
1.21 hp	1,212 in-lb	2,424 in-lb	33 cfm	47 RPM	23 RPM	¾ in	2.19 in	0.187 in	¼ in NPT	374:1	13.13 in	2.69 in	M007RVR374BR6	1AAG3
3 hp	1,800 in-lb	3,600 in-lb	95 cfm	170 RPM	83 RPM	1 in	2.25 in	0.25 in	½ in NPT	51:1	14.5 in	4 in	4840U	1AAG5
3.2 hp	378 in-lb	756 in-lb	95 cfm	975 RPM	485 RPM	1 in	2.25 in	0.25 in	½ in NPT	9:1	12.13 in	4 in	4840M	1AAG4



1AAG1



Tank-Mounted, Enclosed Oilless Air Compressors

- Field-adjustable pressure switch
- Single phase

Innovative reservoir can provide a blast of high pressure. Tank dampens pulsation from the reciprocating compressor.

All models incorporate a Gast piston compressor pump. Pressure switch setting: 70 psi-On/90 psi-Off. Gray finish.

1/6-HP Compressors—Include pressure switch, manual drain, pressure safety valve, pressure gauge, and globe valve.

½- to 1½-HP Compressors—Include coded tank, pressure switch, manual drain, pressure safety valve, pressure gauge, and globe valve. 5Z676 has magnetic starter.



2CJH1



5Z675

HP	Voltage	Amps AC	Tank Size	(F)NPT Outlet	L	Overall W	H	Mfr. Model	Item No.
1/6	115	—	2 gal.	¼ in	18 in	8 in	17 in	1LAA-251T-M100X	2CJH1
1/6	115	—	12 gal.	¼ in	26 in	14 in	21 in	3HBB-69T-M300AX	11X372
3/4	115/230	15.8/7.9	2 gal.	¼ in	18 in	13 in	22 in	5HCD-101T-M550NGX	5Z674
3/4	115/230	15.8/7.9	20 gal.	¼ in	33 in	16 in	27 in	5HCD-100TA-M550NGX	5Z675
1 1/2	230	—	30 gal.	¾ in	38 in	17 in	29 in	7HDD-70TA-M750X	5Z676

* Factory wired for 230V, may be converted to 115V.

Sign in to **Grainger.com®** to see **YOUR Pricing** and **MORE**