

## Hydraulic Cylinders

- Max. pressure: 2500 psi
- Temp. range: -10° to 165°F
- All-steel construction with black finish
- Modular mounting design

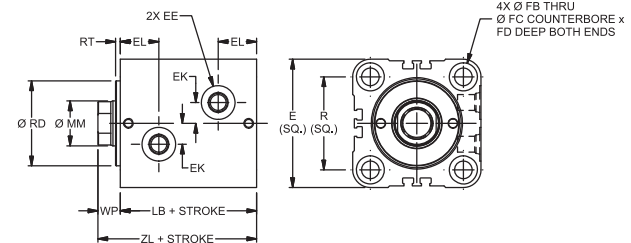
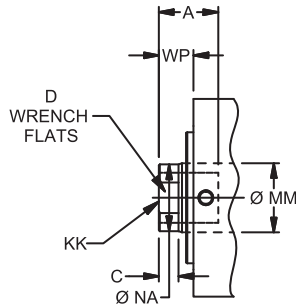
6", 8", 10", and 12" stroke cylinders have adjustable cushions on both ends. Piston rods are case hardened and hard chrome plated to resist mechanical damage. Urethane rod seal and nitrile piston seals are compatible with standard hydraulic fluids.

Note: Compact Hydraulic Cylinders available on Grainger.com.

Bore Dia.		Dimensions (in.)									
A	B	C	E	EE	F	G	J	K	L	M	P
1 1/2 in	3/4	1 1/2	3/8	2 1/2	3/8	1 1/4	1 1/2	3/4-16	5/4	1	2 1/2
2 in	1 1/2	1 1/2	3/8	3 1/2	3/8	1 1/4	1 1/2	3/4-16	5/4	1	3
2 1/2 in	1 1/2	1 1/2	3/8	3 1/2	3/8	1 1/4	1 1/2	3/4-16	5/4	1	3
3 1/4 in	1 1/2	2	3/8	4 1/2	3/8	2	1 1/4	1-14	6 1/4	1 1/4	3 1/2
4 in	2	2 1/2	3/4	5	3/4	2	1 1/4	1 1/4-12	6 3/4	1 3/4	3 3/4
Stroke Retracted Column Rod Switch Item											
Length Length Load Dia. Ready No.											
<b>1 1/2 in Bore Dia. - Double Acting</b>											
1 in	6 1/2 in	4425 lbf	% in	No	794K99						
2 in	7 1/2 in	4425 lbf	% in	No	794KA0						
3 in	8 1/2 in	4425 lbf	% in	No	794KA1						
4 in	9 1/2 in	4425 lbf	% in	No	794KA2						
6 in	11 1/2 in	4425 lbf	% in	No	794KA3						
8 in	13 1/2 in	4425 lbf	% in	No	794KA4						
6 in	11 1/2 in	4425 lbf	% in	No	794K79						
8 in	13 1/2 in	4425 lbf	% in	Yes	794K80						
<b>2 in Bore Dia. - Double Acting</b>											
1 in	7 1/2 in	7850 lbf	1 in	No	794KA5						
2 in	8 1/2 in	7850 lbf	1 in	No	794KA6						
4 in	10 1/2 in	7850 lbf	1 in	No	794KA7						
6 in	12 1/2 in	7850 lbf	1 in	No	794KA8						
8 in	14 in	7850 lbf	1 in	No	794KA9						
10 in	16 in	7850 lbf	1 in	No	794KC0						
<b>2 1/2 in Bore Dia. - Double Acting</b>											
1 in	7 1/4 in	12275 lbf	1 in	No	794KC1						
2 in	8 1/4 in	12275 lbf	1 in	No	794KC2						
4 in	10 1/4 in	12275 lbf	1 in	No	794KC3						
6 in	12 1/4 in	12275 lbf	1 in	No	794KC4						
8 in	14 1/4 in	12275 lbf	1 in	No	794KC5						
10 in	16 1/4 in	12275 lbf	1 in	No	794KC6						
<b>2 in Bore Dia. - Double Acting</b>											
6 in	12 in	7850 lbf	1 in	Yes	794K82						
8 in	14 in	7850 lbf	1 in	Yes	794K83						
10 in	16 in	7850 lbf	1 in	Yes	794K84						

Function		Item No.
Position Sensors for Cylinders - Tie Rod Mounted		
Normally Open or Normally Closed PNP		4YRD6
Normally Open or Normally Closed NPN		4YRD7
Required Power Cord for Position Sensors, 16 ft.		
Power Supply/Signal Cordset		4YRD8

Bore Dia.	FRONT OR REAR FLANGE Item No.	CLEVIS Item No.	EYE BRACKET Item No.	ROD CLEVIS Item No.
<b>Mounting Hardware</b>				
1 1/2 in	794K59	794K60	794K69	794K70
2 in	794K61	794K62	794K71	794K72
2 1/2 in	794K63	794K64	—	—
3 1/4 in	794K65	794K66	794K73	794K74
4 in	794K67	794K68	794K75	794K76



## Compact Hydraulic Cylinders

- Temp. range: -10° to 165°F
- Aluminum body and piston

Almost half the length of comparable bore and stroke tie rod construction products. Piloted rod gland with long bearing area allows precise alignment of cylinder and load center lines. Standard SAE O-ring ports make leak-free hydraulic line connections.

### POSITIONING SENSORS

- Max. switching current: 100mA

Cost-effective alternative to machine-mounted switches for providing accurate indication of load position. Low-profile design keeps switch within compact cylinder body envelope. Solid-state switches use GMR technology to ensure precision, reducing hysteresis characteristics.

Bore Dia.		Dimensions (mm)									
mm	mm	A	C	D	E	EE (SAE)	EK	EL	FB	FC	FD
20 mm	12	10	6	10	43	#2	6	16.5	5.5	9.5	5.4
25 mm	14	12	6	12	49	#2	8	17.5	5.5	9.5	5.4
32 mm	18	15	8	15	62	#4	11	20.5	7	11	6.5
40 mm	22	20	8	19	70	#4	12	21	9	14	8.6
50 mm	28	24	9	24	80	#4	14	22.5	11	17.5	10.8
63 mm	36	30	11	32	94	#4	17	26	13.5	20	13
Bore Dia.		Stroke Length		Max. Pressure		Retracted Length		Mfr. Model		Item No.	
mm	mm	mm	mm	psi	psi	mm	mm				
20 mm	10 mm	2,030 psi	64 mm	20	TNCH3T9A x 10.00	2XKK7					
	25 mm	2,030 psi	79 mm	20	TNCH3T9A x 25.00	2XKK8					
	50 mm	2,030 psi	104 mm	20	TNCH3T9A x 50.00	2XKK9					
25 mm	10 mm	2,030 psi	66 mm	25	TNCH3T9A x 10.00	2XKL1					
	25 mm	2,030 psi	81 mm	25	TNCH3T9A x 25.00	2XKL2					
	50 mm	2,030 psi	106 mm	25	TNCH3T9A x 50.00	2XKL3					
32 mm	10 mm	2,030 psi	74 mm	32	TNCH3T9A x 10.00	2XKL4					
	25 mm	2,030 psi	89 mm	32	TNCH3T9A x 25.00	2XKL5					
	50 mm	2,030 psi	114 mm	32	TNCH3T9A x 50.00	2XKL6					
40 mm	80 mm	2,030 psi	144 mm	32	TNCH3T9A x 80.00	2XKL7					
	100 mm	2,030 psi	164 mm	32	TNCH3T9A x 100.00	2XKL8					
50 mm	25 mm	2,030 psi	93 mm	40	TNCH3T9A x 25.00	2XKL9					
	50 mm	2,030 psi	118 mm	40	TNCH3T9A x 50.00	2XKN1					
	80 mm	2,030 psi	148 mm	40	TNCH3T9A x 80.00	2XKN2					
63 mm	100 mm	2,030 psi	168 mm	40	TNCH3T9A x 100.00	2XKN3					
	25 mm	1,740 psi	99 mm	50	TNCH3T9A x 25.00	2XKN4					
	50 mm	1,740 psi	124 mm	50	TNCH3T9A x 50.00	2XKN5					
63 mm	80 mm	1,740 psi	154 mm	50	TNCH3T9A x 80.00	2XKN6					
	100 mm	1,740 psi	174 mm	50	TNCH3T9A x 100.00	2XKN7					
	25 mm	1,450 psi	108 mm	63	TNCH3T9A x 25.00	2XKN8					
	50 mm	1,450 psi	133 mm	63	TNCH3T9A x 50.00	2XKN9					
	100 mm	1,450 psi	183 mm	63	TNCH3T9A x 100.00	2XKP1					

Function	Switching Voltage	Mfr. Model	Item No.
<b>Position Indicating Switch, 32 to 125mm</b>			
Normally Open NPN	10 to 30V DC	P8SAGNFAX	61RG47
Reed	10 to 30V AC/DC	P8SAGRFAX	61RG48