

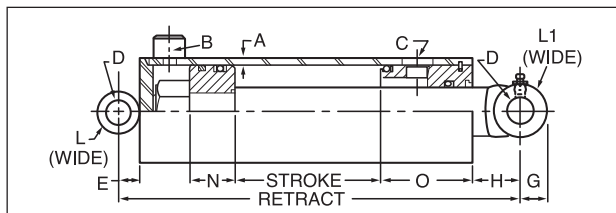


Double-Acting Ag/Mobile Welded Cylinders

- Max. working pressure: 2500 psi

Crosstube end mountings. All-steel welded construction. Heavy-wall honed steel tubing. Ground and polished chrome piston rod. Cast-iron ring, O-ring, and back-up washer packing on piston. Urethane U-cup rod seal. Truarc gland retainer. Cylinders will operate at full pressure through 24" stroke except: 5Z369 with limit of 13,000 lb. (1839 psi) in extension and 5Z371 with limit of 9700 lb.

57366

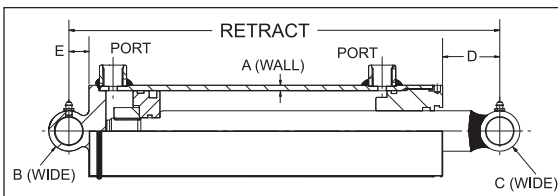


Bore Dia.	Stroke Length	Retracted Length	Rod Dia.	NPT Port (in.)	Mfr. Model	Item No.
2.5 in	16 in	24 in	1 3/8 in	3/8	PMC-5416	52366
	24 in	32 in	1 3/8 in	3/8	PMC-5424	52367
3 in	20 in	28 in	1 1/2 in	1/2	PMC-8320	52368
	30 in	38 in	1 1/2 in	1/2	PMC-8330	52369
3.5 in	36 in	44 in	1 1/2 in	1/2	PMC-5536	52371
	30 in	39 in	2 in	1/2	PMC-5630	52372
4 in	48 in	57 in	2 in	1/2	PMC-5648	5PP02

Bore Dia.	Dimensions (in.)										
	A	B*	C*	D	E	G	H	L	L1	N	O
2.5 in	$\frac{3}{16}$	$\frac{3}{8}$	$\frac{3}{8}$	0.760	$\frac{9}{16}$	$\frac{3}{4}$	2 $\frac{1}{16}$	3	1 $\frac{1}{8}$	1 $\frac{1}{4}$	2 $\frac{1}{2}$
2.5 in	$\frac{3}{16}$	$\frac{3}{8}$	$\frac{3}{8}$	0.760	$\frac{9}{16}$	$\frac{3}{4}$	2 $\frac{1}{16}$	3	1 $\frac{1}{8}$	1 $\frac{1}{4}$	2 $\frac{1}{2}$
2.5 in	$\frac{3}{16}$	$\frac{3}{8}$	$\frac{3}{8}$	0.760	$\frac{9}{16}$	$\frac{3}{4}$	2 $\frac{1}{16}$	3	1 $\frac{1}{8}$	1 $\frac{1}{4}$	2 $\frac{1}{2}$
3 in	$\frac{3}{16}$	$\frac{1}{2}$	$\frac{1}{2}$	1.015	$\frac{1}{16}$	1	2 $\frac{1}{16}$	3 $\frac{1}{2}$	1 $\frac{1}{2}$	1 $\frac{1}{4}$	2 $\frac{1}{2}$
3 in	$\frac{3}{16}$	$\frac{1}{2}$	$\frac{1}{2}$	1.015	$\frac{1}{16}$	1	2 $\frac{1}{16}$	3 $\frac{1}{2}$	1 $\frac{1}{2}$	1 $\frac{1}{4}$	2 $\frac{1}{2}$
3 in	$\frac{3}{16}$	$\frac{1}{2}$	$\frac{1}{2}$	1.015	$\frac{1}{16}$	1	2 $\frac{1}{16}$	3 $\frac{1}{2}$	1 $\frac{1}{2}$	1 $\frac{1}{4}$	2 $\frac{1}{2}$
3 in	$\frac{3}{16}$	$\frac{1}{2}$	$\frac{1}{2}$	1.015	$\frac{1}{16}$	1	2 $\frac{1}{16}$	3 $\frac{1}{2}$	1 $\frac{1}{2}$	1 $\frac{1}{4}$	2 $\frac{1}{2}$
3 in	$\frac{3}{16}$	$\frac{1}{2}$	$\frac{1}{2}$	1.015	$\frac{1}{16}$	1	2 $\frac{1}{16}$	3 $\frac{1}{2}$	1 $\frac{1}{2}$	1 $\frac{1}{4}$	2 $\frac{1}{2}$
3.5 in	$\frac{3}{16}$	$\frac{1}{2}$	$\frac{1}{2}$	1.015	$\frac{1}{16}$	1	1 $\frac{1}{16}$	4	1 $\frac{1}{2}$	1 $\frac{1}{2}$	2 $\frac{1}{2}$
3.5 in	$\frac{3}{16}$	$\frac{1}{2}$	$\frac{1}{2}$	1.015	$\frac{1}{16}$	1	1 $\frac{1}{16}$	4	1 $\frac{1}{2}$	1 $\frac{1}{2}$	2 $\frac{1}{2}$
4 in	$\frac{3}{16}$	$\frac{1}{2}$	$\frac{1}{2}$	1.265	$\frac{1}{16}$	1 $\frac{1}{8}$	2 $\frac{1}{8}$	4 $\frac{1}{2}$	2	1 $\frac{1}{2}$	2 $\frac{1}{2}$

* *Ports. NPTF.*

Bore Dia.															
Stroke Length		Retracted Length		1.5 in			2 in			2.5 in			3 in		
				Port Size	Item No.	Rod Dia.	Port Size	Item No.	Rod Dia.	Port Size	Item No.	Rod Dia.	Port Size	Item No.	Rod Dia.
4 in	12 in	1 in	#4 SAE	6FDD0	1 1/4 in	#6 SAE	6FDD8	1 1/2 in	#8 SAE	6FWT5	1 1/2 in	#4 SAE	6FWU9		
6 in	14 in	1 in	#4 SAE	6FDD1	1 1/4 in	#6 SAE	6FDD9	1 1/2 in	#8 SAE	6FWT6	1 1/2 in	#8 SAE	6FWX0		
8 in	16 in	1 in	#4 SAE	6FDD2	1 1/4 in	#6 SAE	6FDE0	1 1/2 in	#8 SAE	6FWT7	1 1/2 in	#8 SAE	6FWX1		
10 in	18 in	1 in	#4 SAE	6FDD3	1 1/4 in	#6 SAE	6FDE1	1 1/2 in	#8 SAE	6FWT8	1 1/2 in	#4 SAE	6FWX2		
12 in	20 in	1 in	#4 SAE	6FDD4	1 1/4 in	#6 SAE	6FDE2	1 1/2 in	#8 SAE	6FWT9	1 1/2 in	#4 SAE	6FWX3		
14 in	22 in	1 in	#4 SAE	6FDD5	1 1/4 in	#6 SAE	6FDE3	1 1/2 in	#8 SAE	6FWU0	1 1/2 in	#4 SAE	6FWX4		
16 in	24 in	1 in	#4 SAE	6FDD6	1 1/4 in	#6 SAE	6FDE4	1 1/2 in	#8 SAE	6FWU1	1 1/2 in	#4 SAE	6FWX5		
18 in	26 in	—	—	—	1 1/4 in	#6 SAE	6FDE5	1 1/2 in	#8 SAE	6FWU2	1 1/2 in	#8 SAE	6FWX6		
20 in	28 in	—	—	—	1 1/4 in	#6 SAE	6FDE6	1 1/2 in	#8 SAE	6FWU3	1 1/2 in	#8 SAE	6FWX7		
24 in	32 in	—	—	—	1 1/4 in	#6 SAE	6FDE7	1 1/2 in	#8 SAE	6FWU4	1 1/2 in	#4 SAE	6FWX8		
30 in	38 in	—	—	—	1 1/4 in	#6 SAE	6FWT1	1 1/2 in	#8 SAE	6FWU5	1 1/2 in	#4 SAE	6FWX9		
32 in	40 in	—	—	—	1 1/4 in	#6 SAE	6FWT2	1 1/2 in	#8 SAE	6FWU6	1 1/2 in	#4 SAE	6FWY0		
36 in	44 in	—	—	—	1 1/4 in	#6 SAE	6FWT3	1 1/2 in	#8 SAE	6FWU7	1 1/2 in	#4 SAE	6FWY1		
40 in	48 in	—	—	—	—	—	—	—	—	—	1 1/2 in	#8 SAE	6FWY2		
48 in	56 in	—	—	—	—	—	—	—	—	—	1 1/2 in	#8 SAE	6FWY3		



				Bore Dia.						Item No.	
				3.5 in		4 in		Type			
Stroke Length	Retracted Length	Rod Dia.	Port Size	Item No.	Rod Dia.	Port Size	Item No.	Seal Kits			
4 in	14 in	1 3/4 in	#8 SAE	6FWY5	2 in	#8 SAE	6FXA1	For 1.5 in Bore Welded Cylinder		6FDD7	
6 in	16 in	1 3/4 in	#8 SAE	6FWY6	2 in	#8 SAE	6FXA2	For 2 in Bore Welded Cylinder		6FWT4	
8 in	18 in	1 3/4 in	#8 SAE	6FWY7	2 in	#8 SAE	6FXA3	For 2.5 in Bore Welded Cylinder		6FWU8	
10 in	20 in	1 3/4 in	#8 SAE	6FWY8	2 in	#8 SAE	6FXA4	For 3 in Bore Welded Cylinder		6FWY4	
12 in	22 in	1 3/4 in	#8 SAE	6FWY9	2 in	#8 SAE	6FXA5	For 3.5 in Bore Welded Cylinder		6FXA0	
14 in	24 in	1 3/4 in	#8 SAE	6FWZ0	2 in	#8 SAE	6FXA6	For 4 in Bore Welded Cylinder		6FXC6	
16 in	26 in	1 3/4 in	#8 SAE	6FWZ1	2 in	#8 SAE	6FXA7				
18 in	28 in	1 3/4 in	#8 SAE	6FWZ2	2 in	#8 SAE	6FXA8				
20 in	30 in	1 3/4 in	#8 SAE	6FWZ3	2 in	#8 SAE	6FXA9				
24 in	34 in	1 3/4 in	#8 SAE	6FWZ4	2 in	#8 SAE	6FXC0				
30 in	40 in	1 3/4 in	#8 SAE	6FWZ5	2 in	#8 SAE	6FXC1				
32 in	42 in	1 3/4 in	#8 SAE	6FWZ6	2 in	#8 SAE	6FXC2				
36 in	46 in	1 3/4 in	#8 SAE	6FWZ7	2 in	#8 SAE	6FXC3				
40 in	50 in	1 3/4 in	#8 SAE	6FWZ8	2 in	#8 SAE	6FXC4				
48 in	58 in	1 3/4 in	#8 SAE	6FWZ9	2 in	#8 SAE	6FXC5				

[illegible]

		Dimensions (in.)				
Bore Dia.	Pin Dia.	A	B	C	D	E
2.5 in	1 in	1.88	3.236	2.251	2.645	0.750
2.5 in	1 in	1.888	3.236	2.251	2.645	0.750
2.5 in	1 in	1.888	3.236	2.251	2.645	0.750
2.5 in	1 in	1.888	3.236	2.251	2.645	0.750
2.5 in	1 in	1.888	3.236	2.251	2.645	0.750
2.5 in	1 in	1.888	3.236	2.251	2.645	0.750
3 in	1 in	1.888	3.740	2.251	2.126	0.750
3 in	1 in	1.888	3.740	2.251	2.126	0.750
3 in	1 in	1.888	3.740	2.251	2.126	0.750
3 in	1 in	1.888	3.740	2.251	2.126	0.750
3 in	1 in	1.888	3.740	2.251	2.126	0.750
3 in	1 in	1.888	3.740	2.251	2.126	0.750
3 in	1 in	1.888	3.740	2.251	2.126	0.750
3 in	1 in	1.888	3.740	2.251	2.126	0.750
3 in	1 in	1.888	3.740	2.251	2.126	0.750
3 in	1 in	1.888	3.740	2.251	2.126	0.750
3 in	1 in	1.888	3.740	2.251	2.126	0.750
3 in	1 in	1.888	3.740	2.251	2.126	0.750
3.5 in	1 1/4 in	0.219	4.236	2.244	3.862	1.000
3.5 in	1 1/4 in	0.219	4.236	2.244	3.862	1.000
3.5 in	1 1/4 in	0.219	4.236	2.244	3.862	1.000
3.5 in	1 1/4 in	0.219	4.236	2.244	3.862	1.000

[illegible]

Double-Acting Ag/Mobile Welded Cylinders

- Max. working pressure: 3000 psi
- Temp. range: 20° to 220°F

Cross-tube mounted cylinders feature ductile-iron pistons and precision-honed steel tubes, with Polypak rod seals and high-tensile strength chrome-plated tie rods. Black finish.