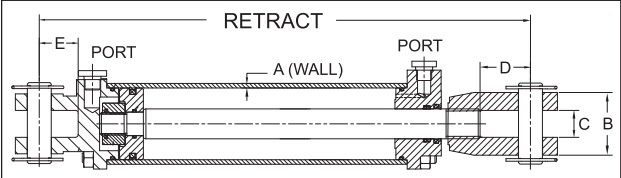


CHIEF Prince
Double-Acting
Tie-Rod Cylinders

2500 psi models feature: O-ring seal and vented back-up washers on piston, and U-cup on the gland. 3000 psi models feature: RoyalPlate Plus coating on all piston rods which offers substantial performance enhancements and outstanding corrosion protection. Precision-honed tubes and ground and polished chromed piston rods. Ductile-iron piston with O-ring seal between piston rod and piston. Urethane U-cup rod seal, metal encased rod wiper (2 1/2" bore and larger), crown seal on piston, nylon bearing on piston (4", 4 1/2", and 5" bores), and hardened pins (4", 4 1/2", and 5" bores). O-ring seal between tube and ductile-iron butt and gland casting.

Bore Dia.	Stroke Length	Retracted Length	Column Load	Rod Dia.	Max. Pressure	Dimensions (in.)										Mfr. Model	Item No.
						A	B*	C	D	E	F	G	H	J	K		
Chief																	
2 in	4 in	14 1/4 in	9420 lb	1 1/8 in	3,000 psi	3/16	SAE 8	1.0002.0202.6932	1253.4901	1.671	1.060	1 1/2-12	200411TCU3	53PZ37			
2 in	8 in	20 1/4 in	9420 lb	1 1/8 in	3,000 psi	3/16	SAE 8	1.0002.0202.6932	1255.4901	1.671	1.060	1 1/2-12	200811TCU3	53PZ38			
2 in	20 in	30 1/4 in	7050 lb	1 1/8 in	3,000 psi	3/16	SAE 8	1.0002.0202.6932	1253.4901	1.671	1.060	1 1/2-12	202011TCU3	53PZ39			
2 1/2 in	8 in	20 1/4 in	14,720 lb	1 1/2 in	3,000 psi	3/16	SAE 8	1.0002.0602.7132	1255.4901	1.671	1.060	1 1/2-12	250811TCU3	53PZ40			
2 1/2 in	12 in	22 1/4 in	14,720 lb	1 1/2 in	3,000 psi	3/16	SAE 8	1.0002.0602.7132	1253.4901	1.671	1.060	1 1/2-12	251211TCU3	53PZ41			
3 in	8 in	20 1/4 in	21,200 lb	1 1/4 in	3,000 psi	3/16	SAE 8	1.0602.0602.8272	1255.3521	1.671	1.060	1 1/2-12	300812TCU3	53PZ42			
3 in	16 in	31 1/2 in	21,200 lb	1 1/2 in	3,000 psi	3/16	SAE 8	1.0602.0602.8272	1258.6021	1.671	1.060	1 1/2-12	301615TCU3	53PZ43			
3 in	24 in	34 1/4 in	16,580 lb	1 1/2 in	3,000 psi	3/16	SAE 8	1.0602.0602.8272	1253.3071	1.671	1.060	1 1/2-12	302415TCU3	53PZ44			
3 1/2 in	8 in	20 1/4 in	28,860 lb	1 1/2 in	3,000 psi	3/16	SAE 8	1.0602.0002.7562	1255.3521	1.671	1.060	1 1/2-12	350815TCU3	53PZ45			
3 1/2 in	16 in	31 1/2 in	22,350 lb	1 1/2 in	3,000 psi	3/16	SAE 8	1.0602.0002.7562	1258.6021	1.671	1.060	1 1/2-12	351615TCU3	53PZ46			
4 in	8 in	20 1/4 in	37,690 lb	1 1/2 in	3,000 psi	3/16	SAE 8	1.1252.0002.8742	1253.3721	1.671	1.060	1 1/2-12	400815TCU3	53PZ47			
4 in	16 in	31 1/2 in	37,690 lb	2 in	3,000 psi	3/16	SAE 8	1.1252.0002.8742	1258.6221	1.671	1.060	1 1/2-12	401620TCU3	53PZ48			
4 in	24 in	34 1/4 in	37,690 lb	2 in	3,000 psi	3/16	SAE 8	1.1252.0002.8742	1253.3721	1.671	1.060	1 1/2-12	402420TCU3	53PZ49			
5 in	8 in	20 1/4 in	58,900 lb	2 in	3,000 psi	1/4	SAE 12	1.3782.1182.9252	1254.0891	2.001	1.130	1 1/2-12	500820TCU3	53PZ50			
5 in	16 in	31 1/2 in	58,900 lb	2 in	3,000 psi	1/4	SAE 8	1.3782.1182.9252	1257.3391	2.001	1.130	1 1/2-12	501620TCU3	53PZ51			
5 in	24 in	36 1/4 in	58,900 lb	2 1/4 in	3,000 psi	1/4	SAE 8	1.3782.1182.9252	1254.0891	2.001	1.130	1 1/2-12	502422TCU4	53PZ52			
Prince																	
2 in	4 in	14 1/4 in	9425 lb	1 1/8 in	3,000 psi	3/16	SAE 8	1.0151.11316	2 3/8	1 1/4	3 1/2	1.06	1 1/2-12 UNF	B200040ABAAA07B	4HL38		
2 in	8 in	20 1/4 in	9425 lb	1 1/8 in	3,000 psi	3/16	SAE 8	1.0151.11316	2 3/8	1 1/4	5 1/2	1.06	1 1/2-12 UNF	A200080ABAAA07B	4HL39		
2 in	20 in	30 1/4 in	7760 lb	1 1/8 in	3,000 psi	3/16	SAE 8	1.0151.11316	2 3/8	1 1/4	3 1/2	1.06	1 1/2-12 UNF	B200200ABAAA07B	4HL40		
2 1/2 in	8 in	20 1/4 in	14,730 lb	1 1/4 in	3,000 psi	3/16	SAE 8	1.0151.11316	2 3/8	1 1/4	5 1/2	1.06	1 1/2-12 UNF	A250080ABAAA07B	4HL41		
2 1/2 in	12 in	22 1/4 in	14,730 lb	1 1/4 in	3,000 psi	3/16	SAE 8	1.0151.11316	2 3/8	1 1/4	5 1/2	1.06	1 1/2-12 UNF	B250120ABAAA07B	4HL42		
3 in	8 in	20 1/4 in	16,900 lb	1 1/2 in	3,000 psi	3/16	SAE 8	1.0151.11316	2 3/8	1 1/4	5 1/2	1.06	1 1/2-12 UNF	E300080ABAAA07B	4HL43		
3 in	16 in	31 1/2 in	16,900 lb	1 1/2 in	3,000 psi	3/16	SAE 8	1.0151.11316	2 3/8	1 1/4	9	1.06	1 1/2-12 UNF	A300160ABAAA07B	4HL44		
3 in	24 in	34 1/4 in	16,900 lb	1 1/2 in	3,000 psi	3/16	SAE 8	1.0151.11316	2 3/8	1 1/4	3 1/2	1.06	1 1/2-12 UNF	B300240ABAAA07B	4HL45		
4 in	8 in	20 1/4 in	37,700 lb	1 1/4 in	3,000 psi	3/16	SAE 8	1.0151.11316	2 3/8	1 1/4	5 1/2	1.06	1 1/2-12 UNF	A400080ABAAA07B	4HL49		
4 in	16 in	31 1/2 in	37,700 lb	1 1/4 in	3,000 psi	3/16	SAE 8	1.0151.11316	2 3/8	1 1/4	5 1/2	1.06	1 1/2-12 UNF	A400160ABAAA07B	4HL50		
4 in	24 in	34 1/4 in	37,710 lb	1 1/4 in	3,000 psi	3/16	SAE 8	1.0151.11316	2 3/8	1 1/4	5 1/2	1.06	1 1/2-12 UNF	B400240ABAAA07B	4HL51		
5 in	8 in	20 1/4 in	58,900 lb	2 in	3,000 psi	1/4	SAE 8	1.2651.11316	2 3/8	2	4	1.13	1 1/2-12 UNF	B500080ACDAA07B	4HL56		
2 1/2 in	8 in	20 1/4 in	Full PSI	1 1/8 in	2,500 psi	3/16	SAE 8	1.0151.11316	2 3/8	1 1/4	5 1/2	1.06	1 1/2-12 UNF	SAE-7008	4Z189		
3 in	8 in	20 1/4 in	Full PSI	1 1/2 in	2,500 psi	3/16	SAE 8	1.0151.11316	2 3/8	1 1/4	5 1/2	1.06	1 1/2-12 UNF	SAE-7108	4Z190		
4 in	8 in	20 1/4 in	Full PSI	1 1/2 in	2,500 psi	3/16	SAE 8	1.0151.11316	2 3/8	1 1/4	5 1/2	1.06	1 1/2-12 UNF	SAE-8608	4Z192		
5 in	8 in	20 1/4 in	Full PSI	1 1/4 in	2,500 psi	3/4	SAE 8	1.2651.11316	2 3/8	2	4	1.06	1 1/2-12 UNF	SAE-8208	4Z193		

* SAE O-ring.



Double-Acting Tie-Rod Cylinders MAXIM

■ Max. working pressure: 2500 psi ■ Temp. range: -20° to 220°F
Cylinders feature precision-honed steel tube and ductile-iron piston with high-tensile strength chrome-plated rod. Polypak rod seals. Pins and clips are included. 1" pin dia., except 6FCX7, 6FCX8, 6FCZ2, 6FCZ3, and 6FDC0 are 1 1/4" dia. Black color.

Bore Dia.	Stroke Length	Retracted Length	Rod Dia.	A	B	C	D	E	Mr. Model	Item No.
2 in	4 in	14 1/4 in	1 1/8 in	0.189	2.500	1.125	2.125	1.625	218-297	6FCF19
2 in	6 in	16 1/4 in	1 1/8 in	0.189	2.500	1.125	2.125	1.625	218-298	6FCF00
2 in	8 in	18 1/4 in	1 1/8 in	0.189	2.500	1.125	2.125	1.625	218-299	6FCF01
2 in	10 in	20 1/4 in	1 1/8 in	0.189	2.500	1.125	2.125	1.625	218-300	6FCF02
2 in	12 in	22 1/4 in	1 1/8 in	0.189	2.500	1.125	2.125	1.625	218-306	6FCF03
2 in	14 in	24 1/4 in	1 1/8 in	0.189	2.500	1.125	2.125	1.625	218-307	6FCF04
2 in	16 in	26 1/4 in	1 1/8 in	0.189	2.500	1.125	2.125	1.625	218-308	6FCF05
2 in	18 in	28 1/4 in	1 1/8 in	0.189	2.500	1.125	2.125	1.625	218-309	6FCF06
2 in	20 in	30 1/4 in	1 1/8 in	0.189	2.500	1.125	2.125	1.625	218-311	6FCF08
2 in	24 in	34 1/4 in	1 1/8 in	0.189	2.500	1.125	2.125	1.625	218-312	6FCF09
2 in	30 in	40 1/4 in	1 1/8 in	0.189	2.500	1.125	2.125	1.625	218-313	6FCF10
2 in	36 in	46 1/4 in	1 1/8 in	0.189	2.500	1.125	2.125	1.625	218-314	6FCF11
2 in	48 in	58 1/4 in	1 1/8 in	0.189	2.500	1.125	2.125	1.625	218-315	6FCF12
2 1/2 in	4 in	14 1/4 in	1 1/4 in	0.189	2.500	1.125	2.125	1.625	218-316	6FCF14
2 1/2 in	6 in	16 1/4 in	1 1/4 in	0.189	2.500	1.125	2.125	1.625	218-317	6FCF15
2 1/2 in	8 in	18 1/4 in	1 1/4 in	0.189	2.500	1.125	2.125	1.625	218-318	6FCF16
2 1/2 in	10 in	20 1/4 in	1 1/4 in	0.189	2.500	1.125	2.125	1.625	218-301	6FCF17

* Pin dia.: 1/4"

Bore Dia.	Stroke Length	Retracted Length	Rod Dia.	Dimensions (in.)					Mr. Model	Item No.
A	B	C	D	E						
2 1/2 in	10 in	20 1/4 in	1 1/4 in	0.189	2.500	1.125	2.125	1.625	218-319	6FCV8
2 1/2 in	12 in	22 1/4 in	1 1/4 in	0.189	2.500	1.125	2.125	1.625	218-320	6FCV9
2 1/2 in	14 in	24 1/4 in	1 1/4 in	0.189	2.500	1.125	2.125	1.625	218-321	6FCW0
2 1/2 in	16 in	26 1/4 in	1 1/4 in	0.189	2.500	1.125	2.125	1.625	218-322	6FCW1
2 1/2 in	18 in	28 1/4 in	1 1/4 in	0.189	2.500	1.125	2.125	1.625	218-323	6FCW2
2 1/2 in	20 in	30 1/4 in	1 1/4 in	0.189	2.500	1.125	2.125	1.625	218-324	6FCW3
2 1/2 in	24 in	34 1/4 in	1 1/4 in	0.189	2.500	1.125	2.125	1.625	218-325	6FCW4
2 1/2 in	30 in	40 1/4 in	1 1/4 in	0.189	2.500	1.125	2.125	1.625	218-329	6FCW5
2 1/2 in	36 in	46 1/4 in	1 1/4 in	0.189	2.500	1.125	2.125	1.625	218-330	6FCW6
2 1/2 in	48 in	58 1/4 in	1 1/4 in	0.189	2.500	1.125	2.125	1.625	218-331	6FCW7
3 in	4 in	14 1/4 in	1 1/4 in	0.189	2.625	1.125	2.125	1.625	218-333	6FCX0
3 in	6 in	16 1/4 in	1 1/4 in	0.189	2.625	1.125	2.125	1.625	218-334	6FCX1
3 in	8 in	18 1/4 in	1 1/4 in	0.189	2.625	1.125	2.125	1.625	218-335	6FCX2
3 in	10 in	20 1/4 in	1 1/4 in	0.189	2.625	1.125	2.125	1.625	218-336	6FCX3
3 in	12 in	22 1/4 in	1 1/4 in	0.189	2.625	1.125	2.125	1.625	218-337	6FCX5
3 in	14 in	24 1/4 in	1 1/4 in	0.189	2.625	1.125	2.125	1.625	218-338	6FCX6
3 in	16 in	26 1/4 in	1 1/4 in	0.189	2.625	1.125	2.125	1.625	218-339	6FCX7 *
3 in	16 in	31 1/2 in	1 1/4 in	0.189	2.625	1.125	2.125	1.625	218-340	6FCX8 *
3 in	18 in	28 1/4 in	1 1/4 in	0.189	2.625	1.125	2.125	1.625	218-341	6FCX9
3 in	20 in	30 1/4 in	1 1/4 in	0.189	2.625	1.125	2.125	1.625	218-342	6FCY0
3 in	24 in	34 1/4 in	1 1/4 in	0.189	2.625	1.125	2.125	1.625	218-343	6FCY1 *
3 in	30 in	40 1/4 in	1 1/2 in	0.189	2.625	1.125	2.125	1.625	218-344	6FCY2
3 in	36 in	46 1/4 in	1 1/2 in	0.189	2.625	1.125	2.125	1.625	218-345	6FCY3
3 in	48 in	58 1/4 in	1 1/2 in	0.189	2.625	1.125	2.125	1.625	218-346	6FCY4
3 1/2 in	8 in	18 1/4 in	1 1/2 in	0.218	2.625	1.125	2.125	1.625	218-349	6FCY7
3 1/2 in	8 in	20 1/4 in	1 1/4 in	0.218	2.625	1.125	2.125	1.625	218-303	6FCY8
3 1/2 in	10 in	20 1/4 in	1 1/4 in	0.218	2.625	1.125	2.125	1.625	218-350	6FCY9
3 1/2 in	12 in	22 1/4 in	1 1/4 in	0.218	2.625	1.125	2.125	1.625	218-351	6FCZ0
3 1/2 in	14 in	24 1/4 in	1 1/4 in	0.218	2.625	1.125	2.125	1.625	218-352	6FCZ1
3 1/2 in	16 in	26 1/4 in	1 1/4 in	0.218	2.625	1.125	2.125	1.625	218-353	6FCZ2 *
3 1/2 in	16 in	31 1/2 in	1 1/2 in	0.218	2.625	1.125	2.125	1.625	218-354	6FCZ3 *
3 1/2 in	18 in	28 1/4 in	1 1/4 in	0.218	2.625	1.125	2.125	1.625	218-355	6FCZ4
3 1/2 in	20 in	30 1/4 in	1 1/4 in	0.218	2.625	1.125	2.125	1.625	218-356	6FCZ5
3 1/2 in	24 in	34 1/4 in	1 1/2 in	0.218	2.625	1.125	2.125	1.625	218-326	6FCZ6
3 1/2 in	30 in	40 1/4 in	1 1/2 in	0.218	2.625	1.125	2.125	1.625	218-327	6FCZ7
3 1/2 in	36 in	46 1/4 in	1 1/2 in	0.218	2.625	1.125	2.125	1.625	218-328	6FCZ8
3 1/2 in	6 in	14 1/4 in	1 1/4 in	0.218	2.625	1.125	2.125	1.625	218-347	6FDA0
3 1/2 in	8 in	16 1/4 in	1 1/4 in	0.218	2.625	1.125	2.125	1.625	218-348	6FDA1
3 1/2 in	48 in	58 1/4 in	1 1/2 in	0.218	2.625	1.125	2.125	1.625	218-357	6FDA0
4 in	8 in	18 1/4 in	1 1/2 in	0.244	2.625	1.125	2.125	1.625	218-360	6FDA4
4 in	8 in	20 1/4 in	1 1/2 in	0.244	2.625	1.125	2.125	1.625	218-304	6FDA5
4 in	10 in	20 1/4 in	1 1/2 in	0.244	2.625	1.125	2.125	1.625	218-361	6FDA6
4 in	12 in	22 1/4 in	1 1/2 in	0.244	2.625	1.125	2.125	1.625	218-362	6FDA7
4 in	14 in	24 1/4 in	1 1/2 in	0.244	2.625	1.125	2.125	1.625	218-363	6FDA8
4 in	16 in	26 1/4 in	1 1/2 in	0.244	2.625	1.125	2.125	1.625	218-364	6FDA9
4 in	16 in	31 1/2 in	2 in	0.244	2.625	1.125	2.125	1.625	218-365	6FDC0 *
4 in	18 in	28 1/4 in	1 1/2 in	0.244	2.625	1.125	2.125	1.625	218-366	6FDA1
4 in	20 in	30 1/4 in	1 1/2 in	0.244	2.625	1.125	2.125	1.625	218-367	6FDC2
4 in	24 in	34 1/4 in	1 1/2 in	0.244	2.625	1.125	2.125	1.625	218-305	6FDC3
4 in	24 in	34 1/4 in	2 in	0.244	2.625	1.125	2.125	1.625	218-332	6FDC4
4 in	30 in	40 1/4 in	2 in	0.244	2.625	1.125	2.125	1.625	218-368	6FDC5
4 in	36 in	46 1/4 in	2 in	0.244	2.625	1.125	2.125	1.625	218-369	6FDC6
4 in	48 in	58 1/4 in	2 in	0.244	2.625	1.125	2.125	1.625	218-370	6FDC7