

Prince Parker Adjustable-Flow Control Valves

Pressure compensated operation varies speed smoothly over the full range. Once speed is set with the lever, it remains constant regardless of load variation.



6X842

Max. Flow	Outlet Port Size	Max. Pressure	Adjustable Relief Valve	Mfr. Model	Brand	Item No.
16 gpm	1/2 in NPT	3,000 psi	No	RD-150-16	Prince	5PP06
	1/2 in NPT	3,000 psi	Yes	RDRS-150-16	Prince	5PP08
30 gpm	3/4 in NPT	3,000 psi	Yes	RDRS-175-30	Prince	6X842
	3/4 in NPT	3,000 psi	No	RD-175-30	Prince	5PP07
35 gpm	3/4 in NPT	2,000 psi	No	CFQ-A-75	Parker Gresen	38D922
	#12 SAE	3,000 psi	No	CFQ-A-12	Parker Gresen	38D921

Find Check, Relief, and Flow Control Valves at Grainger.com.



Flow Dividers

Accurately divide flow from a single pump source to a pair of matched cylinders or fluid motors. Gear-type rotary flow dividers synchronize 2 parallel motions hydraulically rather than mechanically. Max. outlet pressure: 4500 psi. Max. speed: 4500 rpm. Integral differential relief valves for each circuit limit pressure intensification. Cast-iron body.



4F661

Flow Rate (gpm)	Displacement (cc/rev)	Operating Pressure (psi)	SAE Port Sizes (in.) Inlet	SAE Port Sizes (in.) Outlet	Brand	Item No.
2.4-5	0.129 cc/rev	3,000 psi	3/4 -16	3/4 -16	Concentric	4F660
5-10	0.258 cc/rev	2,300 psi	1/2 -14	1/2 -14	Concentric	4F661
10-20	0.581 cc/rev	2,750 psi	1 1/16 -12	1 1/16 -14	Concentric	4F662
35	—	2,000 psi	3/4	3/4	Parker Gresen	38D930
35	—	2,500 psi	1 1/16 -12	1 1/16 -12	Parker Gresen	38D929

D03 and D05 Size Solenoid-Operated Directional Valves

Bolt kits for valves available separately.

Note: Additional solenoid-operated directional valves are available; on Grainger.com, search for "solenoid-operated directional valves."

D03 SIZE

- Working port pressure (P, A, B): 5000 psi max.
- Max. tank pressure: 1500 psi AC, 3000 psi DC
- AC valves have conduit box-style termination; DC valves require wire connector plugs, 4UB23 and 4UB24, sold separately

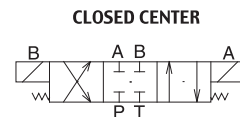
Optimized valve body/spool design minimizes pressure drop and energy consumption. Compatible with D03 and CETOP-3 mounting patterns.

D05 SIZE

- Max. operating pressure: 5000 psi
- Max. tank pressure: 1500 psi AC, 3000 psi DC
- Integral conduit box for wire termination
- Feature higher machine productivity and uptime. Compatible with D05 and CETOP-5 mounting patterns. Solenoid/core tube design allows coils to be changed without removing valve from installation. Manual overrides.

Coil Volts	Spool Type	D03 VALVES			D05 VALVES		
		Max. GPM @ 3000 psi	Mfr. Model	Item No.	Max. GPM @ 3000 psi	Mfr. Model	Item No.
110-120 AC	Open	12.5	D1VW002CNYGF5	2NMU2	30	D3W002CNYK5	5AE84
	Closed	22	D1VW001CNYGF5	2NMU3	28	D3W001CNYK5	4UB27
	Float	12	D1VW004CNYGF5	2NMU4	17	D3W004CNYK5	4UB28
	Tandem	12.5	D1VW009CNYGF5	2NMU5	12	D3W009CNYK5	4UB29
12 DC	Open	20	D1VW002CNKW	2NMU6	40	D3W002CNKW	4DJY6
	Closed	20	D1VW001CNKW	2NMU7	40	D3W001CNKW	4DJY7
	Float	18.5	D1VW004CNKW	2NMU8	—	—	—
	Tandem	13.3	D1VW009CNKW	2NMU9	23	D3W009CNKW	4DJY9
24 DC	Open	20	D1VW002CNJW	2NMV1	—	—	—
	Closed	20	D1VW001CNJW	2NMV2	40	D3W001CNJW	4DJ22
	Float	18.5	D1VW004CNJW	2NMV3	—	D3W004CNJW	4DJ23
	Tandem	13.3	D1VW009CNJW	2NMV4	23	D3W009CNJW	4DJ24

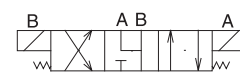
Description		D03 ACCESSORIES			D05 ACCESSORIES		
		Port Size	Mfr. Model	Item No.	Port Size	Mfr. Model	Item No.
Accessories for D03 and D05 Valves							
Subplate Bottom Port		SAE #8 (3/4 x 16)	SPD24SS35	4UB20	1/2-14 NPTF	SPD34NS35	4UB31
Subplate Side Port		1/4-18 NPTF	SPD22NS35	4UB21	—	—	—
Black Wire Connector Plug for Solenoid B		SAE #8 (3/4 x 16)	SPD24SA35	4UB22	—	—	—
Gray Wire Connector Plug for Solenoid A		—	692914	4UB23	—	—	—
Bolt Kit for CETOP-03 Valves		—	692915	4UB24	—	—	—
Subplate Side Port		—	BK209	4UB25	—	—	—
Bolt Kit for CETOP-05 Valves		SAE #8 (3/4 x 16)	SPD34SA35	4UB32	—	—	—
Cover Plate		—	SPD2C1EN35	45NL42	BK98	4UB33	—
		—	—	—	SPD3C1EN35	45NL43	—



CLOSED CENTER



OPEN CENTER

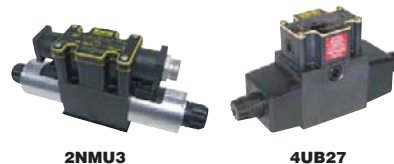


FLOAT CENTER



TANDEM CENTER

Spool Type



2NMU3

4UB27

Monoblock Valves

- Load checks provided on all spools (except 1A967)
- All valves have direct-acting relief valves

Single-spool valves are 3-position and tandem center, 2- and 3-spool valves have a float spool. 6X845, 4HL36, 4HL37, 6W566, and 4HL32 can be converted to closed center or to power beyond operation; 6W565 can be converted to closed center only. 1A967 has a pressure detent release preset at 1200 psi.

Note: Additional stack valves are available; on Grainger.com, search for "stack valves."



6X844



6W566

Spool Action	Ways	Spools	Inlet/Outlet Port Size NPT (in.)	Work Port Size NPT (in.)	Capacity gpm	Factory Relief Setting	Relief Range psi	Max. psi	Mfr. Model	Item No.
Spring Center To Neutral	4	1	1/2	1/2	16	1500 psi @ 12 gpm	1000 to 2750	3000	RD2555T4ESA1	6X844
	4	1	3/4	1/2	30	2000 psi @ 10 gpm	1500 to 3000	3000	RD512CA5A4B1	6X845
	4	1	3/4	1/2	20	1500 psi @ 12 gpm	1000 to 2750	3000	RD2575T4EDA1	6W565
	4	1	3/4	1/2	30	2000 psi @ 10 gpm	1500 to 3000	3000	RD512CB5A4B1	4HL36
Detented	4	1	3/4	1/2	30	2000 psi @ 10 gpm	1500 to 3000	3000	RD512AA5A4B1	4HL37
	4	2	3/4	1/2	25	2250 psi @ 3 gpm	1000 to 2750	2750	LS3000-1	1A967
Spring Center To Neutral, 4th Position Detent	4	1	3/4	1/2	25	2000 psi @ 10 gpm	1500 to 3000	3000	RD522GCA5A4B1	6W566
No. 1: Spring Center To Neutral and 4th Position Detent. No. 2: Spring Center To Neutral	4	2	3/4	1/2	25	2000 psi @ 10 gpm	1500 to 3000	3000	RD532GCCGA5A4B1	4HL32
No. 1: Spring Center To Neutral and 4th Position Detent. No. 2 and No. 3: Spring Center To Neutral	4	3	3/4	1/2	25	2000 psi @ 10 gpm	1500 to 3000	3000	RD532GCCGA5A4B1	4HL32

* Power beyond requires Prince Number 40ZV88 plug. † Closed center requires Prince Number 40ZV87 plug. ‡ Closed center requires Prince Number 40ZV89. Repair parts can be ordered from your local Grainger branch.