



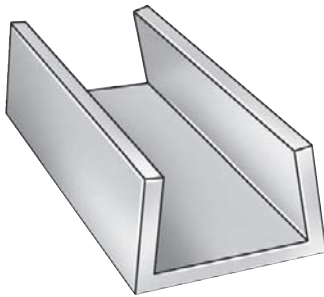
For more information on Plastics, see page 2208



Plastic PTFE Cords

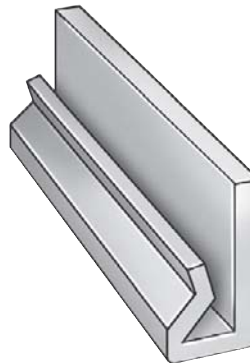
- White Color
- Opaque

Plastic Diameter	Plastic Length		
	10 ft Item No.	25 ft Item No.	50 ft Item No.
Plastic Diameter Tolerance ±0.002 in			
0.028 in	30GA48	30GA61	30GA74
0.031 in	30GA49	30GA62	30GA75
0.035 in	30GA50	30GA63	30GA76
0.039 in	30GA51	30GA64	30GA77
0.047 in	30GA52	30GA65	30GA78
0.05 in	30GA53	30GA66	30GA79
0.055 in	30GA54	30GA67	30GA80
0.062 in	30GA55	30GA68	30GA81
0.07 in	30GA56	30GA69	30GA82
Plastic Diameter Tolerance ±0.003 in			
0.078 in	30GA57	30GA70	30GA83
0.094 in	30GA58	30GA71	30GA84
0.1 in	30GA59	30GA72	30GA85
0.125 in	30GA60	30GA73	30GA86



Plastic U-Shaped Channels

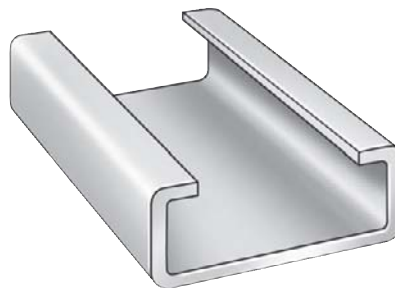
Plastic Length	Outside Base Width	Outside Leg Length	Inside Base Width	Inside Leg Length	Color	Plastic Clarity	Item No.
Polycarbonate							
1 ft	0.49 in	0.4 in	0.39 in	0.35 in	Clear	Clear	60DP50
	0.365 in	0.345 in	0.265 in	0.295 in	Clear	Clear	60DP49
	0.235 in	0.3 in	0.135 in	0.25 in	Clear	Clear	60DP48
2 ft	0.49 in	0.4 in	0.39 in	0.35 in	Clear	Clear	60DP47
	0.365 in	0.345 in	0.265 in	0.295 in	Clear	Clear	60DP46
	0.235 in	0.3 in	0.135 in	0.25 in	Clear	Clear	60DP45
3 ft	0.49 in	0.4 in	0.39 in	0.35 in	Clear	Clear	60DP44
	0.365 in	0.345 in	0.265 in	0.295 in	Clear	Clear	60DP43
	0.235 in	0.3 in	0.135 in	0.25 in	Clear	Clear	60DP42
6 ft	0.49 in	0.4 in	0.39 in	0.35 in	Clear	Clear	60DP41
	0.365 in	0.345 in	0.265 in	0.295 in	Clear	Clear	60DP40
	0.235 in	0.3 in	0.135 in	0.25 in	Clear	Clear	60DP39
PVC Type 1							
5 ft	3.54 in	0.781 in	—	—	Dark Gray	Opaque	1UNK1
	2.51 in	1.469 in	—	—	Dark Gray	Opaque	1UN9
	1.14 in	1.656 in	—	—	Dark Gray	Opaque	1UN7
	0.51 in	0.594 in	—	—	Dark Gray	Opaque	1UN3
UHMW Polyethylene							
10 ft	1.25 in	0.734 in	1 in	0.609 in	White	Opaque	2NJC6
	3 in	1 in	2.25 in	0.5 in	White	Opaque	2NJC5
	1 in	0.75 in	0.5 in	0.375 in	White	Opaque	2NJ4
	1.5 in	0.875 in	1 in	0.5 in	White	Opaque	2NJ3
	2 in	1 in	1.5 in	0.625 in	White	Opaque	2NJ2
	2.5 in	1 in	2 in	0.625 in	White	Opaque	2NJ1
	3 in	1 in	2.5 in	0.625 in	White	Opaque	2NJA9
	4.25 in	1.25 in	3.5 in	0.875 in	White	Opaque	2NJA8



Plastic J Legs

- UHMW Polyethylene

Plastic Width	Plastic Length	Rail Gauge	Plastic Thickness	Item No.
1 in	10 ft	12	1/4 in	2NJE1
3 in				2NJE2



Plastic C Sections

- 1/8" wall thickness
- 10 ft. length
- UHMW Polyethylene
- White

Inside Base Width	Inside Leg Length	Bottom Opening Width	Item No.
1 in	1/4 in	3/8 in	2NJE3
1 in	1 in	1/2 in	2NJE6
1 1/2 in	1/2 in	1 in	2NJE5
2 in	1/4 in	1 3/8 in	2NJE4
2 in	1 1/2 in	1 1/2 in	2NJE7



Plastic Perforated Sheets

- Round hole shape

Hole Pattern	Hole Diameter	Plastic Thickness	Plastic Width	Plastic Length	Item No.
Polypropylene					
Staggered	1/8 in	0.063 in	48 in	32 in	5PCY1
		0.063 in	48 in	96 in	5PCY4
		0.125 in	48 in	32 in	5PCX3
	3/16 in	0.125 in	48 in	96 in	5PCX9
		0.125 in	48 in	32 in	5PCX2
		0.125 in	48 in	96 in	5PCX8
Straight	1/4 in	0.125 in	48 in	32 in	5PCW9
		0.25 in	48 in	32 in	5PCW5
		0.25 in	48 in	96 in	5PCW7
PVC Type 1					
Staggered	1/2 in	0.25 in	48 in	32 in	5PCY9
		0.063 in	48 in	96 in	5PDA2
		0.125 in	48 in	96 in	5PCZ8



Plastic Balls

Plastic Diameter	Color	Plastic Hardness	Item No.
Acetal			
3/4"	White	Rockwell M90	497Y76
1"	White	Rockwell M90	497Y77
1 1/2"	White	Rockwell M90	497Y78
Nylon			
1/8"	Off-White	Rockwell M85	497Y79
1/4"	Off-White	Rockwell M85	497Y81
1"	Off-White	Rockwell M85	497Y85
Polypropylene			
1/8"	White	Rockwell M85	497Y86
1/4"	White	Rockwell M85	497Y87
3/8"	White	Rockwell M85	497Y88
1/2"	White	Rockwell M85	497Y89
3/4"	White	Rockwell M85	497Y90
1"	White	Rockwell M85	497Y91