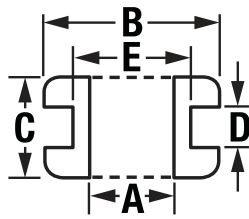
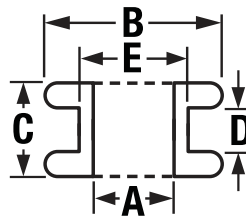


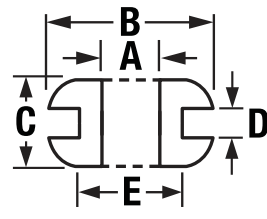
1-800-GRAINGER (472-4643)



Style 1



Style 3



Style 5

Rubber Grommets

■ General purpose grade

Protect against abrasion damage when wires, tubes, and other objects are inserted through holes in metal, plastic, or other hard materials.



Inside Dia. (A)	Outside Dia. (B)	Overall Thickness (C)	Panel Thickness (D)	Panel Hole Dia. (E)	Item No.	Pkg. Qty.
Style 1						
General Purpose SBR - Meets ASTM D2000 2AA606						
3/16 in	13/32 in	5/16 in	3/32 in	9/32 in	3MPN7	100
9/32 in	9/16 in	1/4 in	1/16 in	3/8 in	3MPK5	100
5/16 in	11/16 in	7/16 in	1/4 in	1/2 in	3MPN7	100
3/8 in	5/8 in	1/2 in	1/16 in	1/2 in	3MPL3	50
3/8 in	7/8 in	3/4 in	1/8 in	5/8 in	3MPK7	100
1/2 in	13/16 in	9/32 in	1/16 in	5/8 in	3MPL5	50
1/2 in	1 in	9/32 in	3/32 in	3/4 in	3MPK8	100
9/16 in	1 in	5/16 in	1/16 in	3/4 in	3MPR4	100
9/16 in	1 1/8 in	5/16 in	1/16 in	7/8 in	3MPR5	100
9/16 in	1 1/8 in	3/8 in	1/8 in	7/8 in	3MPR6	100
3/4 in	1 1/8 in	5/16 in	3/32 in	19/16 in	3MPL8	50
3/4 in	1 1/2 in	5/16 in	3/32 in	1 1/8 in	3MPT1	25
7/8 in	1 5/8 in	7/16 in	1/16 in	1 1/4 in	3MPL1	25
1 1/4 in	1 7/8 in	11/32 in	1/16 in	1 1/2 in	3MPT4	25
1 1/4 in	1 7/8 in	3/8 in	3/32 in	1 1/2 in	3MPT5	25
1 in	1 3/4 in	3/8 in	3/32 in	1 3/8 in	3MPT2	25
1 in	1 3/4 in	13/32 in	7/64 in	1 3/8 in	3MPT3	25
1 1/2 in	2 3/8 in	9/32 in	3/32 in	2 in	3MPT7	25
Style 3						
1/4 in	9/16 in	5/16 in	1/16 in	7/16 in	3MPT9	20
3/16 in	3/4 in	3/8 in	1/8 in	1/2 in	3MPU1	20
3/8 in	15/16 in	13/32 in	9/32 in	5/8 in	3MPK9	100
13/32 in	13/16 in	5/16 in	1/16 in	9/16 in	3MPU2	20
Style 5						
General Purpose SBR - Meets ASTM D2000 2AA606						
3/16 in	5/8 in	7/32 in	1/16 in	5/16 in	3MPU5	20
3/8 in	1 in	13/32 in	9/64 in	11/16 in	3MPU6	20

AN	MS	Inside Dia. (A)	Outside Dia. (B)	Overall Thickness (C)	Panel Thickness (D)	Panel Hole Dia. (E)	Item No.	Pkg. Qty.
Specifications:								
931 No. 35489 No.								
Style 1								
Oil Resistant Buna-N - Meets ASTM D2000 2BG506								
3-5	4	3/16 in	7/16 in	3/16 in	1/16 in	5/16 in	3MRG4	50
A3-5	33	3/16 in	7/16 in	1/4 in	1/8 in	5/16 in	3MRG5	50
A5-12	39	5/16 in	1 in	3/8 in	1/8 in	3/4 in	3MRJ3	25
B6-10	69	3/8 in	7/8 in	7/16 in	3/16 in	5/8 in	3MRK2	50
A10-14	46	5/8 in	1 1/8 in	3/8 in	3/8 in	7/8 in	3MLR4	10
B10-14	75	5/8 in	1 1/8 in	7/16 in	3/16 in	7/8 in	3MLR5	10
12-20	135	3/4 in	1 3/8 in	1/4 in	1/16 in	1 1/4 in	3MRN5	10
12-17	20	3/4 in	1 3/8 in	3/8 in	1/16 in	1 1/8 in	3MRN2	25
A12-17	49	3/4 in	1 3/8 in	7/16 in	1/8 in	1 1/8 in	3MRN3	25
C12-17	107	3/4 in	1 3/8 in	9/16 in	1/4 in	1 1/8 in	3MRN4	25
A14-20	51	7/8 in	1 5/8 in	1/2 in	1/8 in	1 1/4 in	3MRN9	25
B14-20	80	7/8 in	1 5/8 in	9/16 in	3/16 in	1 1/4 in	3MRP1	25
16-22	23	1 in	1 3/4 in	7/16 in	1/16 in	1 3/8 in	3MRP2	10
A16-22	52	1 in	1 3/4 in	1/2 in	1/8 in	1 3/8 in	3MRP3	10
B16-22	81	1 in	1 3/4 in	9/16 in	3/16 in	1 3/8 in	3MRP4	25
24-28	27	1 1/2 in	2 1/8 in	7/16 in	1/16 in	1 3/4 in	3MRP4	25
A24-28	56	1 1/2 in	2 1/8 in	1/2 in	1/8 in	1 3/4 in	3MRP5	25
B24-28	85	1 1/2 in	2 1/8 in	9/16 in	3/16 in	1 3/4 in	3MRP5	25
C24-28	114	1 1/2 in	2 1/8 in	3/8 in	1/4 in	1 3/4 in	3MPN6	25

Rubber Edging

Material	Groove Width	Groove Depth	Overall Width	Overall Height	L	Temp. Range	Color	Std.	Item No.
Style A									
SBR	3/16 in	7/16 in	9/16 in	1/2 in	100 ft	0 °F to 220 °FF	Black	ASTM D2000 AA	3HC61
	1/4 in	5/16 in	3/8 in	3/8 in	100 ft	0 °F to 220 °FF	Black	ASTM D2000 AA	3HC62
Style B									
SBR	1/32 in	5/32 in	7/64 in	7/32 in	100 ft	0 °F to 220 °FF	Black	ASTM D2000 AA	3HC65
	1/16 in	11/32 in	7/32 in	7/16 in	100 ft	0 °F to 220 °FF	Black	ASTM D2000 AA	3HC66
	3/32 in	21/64 in	3/16 in	3/8 in	100 ft	0 °F to 220 °FF	Black	ASTM D2000 AA	3HC67
Style C									
SBR	1/8 in	1/4 in	1/4 in	3/8 in	100 ft	0 °F to 220 °FF	Black	ASTM D2000 AA	3HC68
	1/32 in	9/32 in	9/32 in	3/8 in	100 ft	-20 °F to 150 °FF	Black	ASTM D2000 BC	3HC69
	1/8 in	23/32 in	9/16 in	1 in	100 ft	-20 °F to 150 °FF	Black	ASTM D2000 BC	3HC71
Neoprene	1/4 in	1/2 in	1/2 in	3/8 in	100 ft	-20 °F to 150 °FF	Black	ASTM D2000 BC	3HC72
	Style D								
Neoprene	1/16 in	1/4 in	3/16 in	5/16 in	100 ft	-20 °F to 150 °FF	Black	ASTM D2000 BC	3HC75
	3/16 in	3/8 in	3/8 in	9/16 in	100 ft	-20 °F to 150 °FF	Black	ASTM D2000 BC	3HC76
Style E									
Neoprene	1/16 in	5/16 in	1/8 in	3/8 in	100 ft	-20 °F to 150 °FF	Black	ASTM D2000 BC	3HC78
	1/8 in	1/4 in	1/4 in	5/16 in	100 ft	-20 °F to 150 °FF	Black	ASTM D2000 BC	3HC79
Style F									
Neoprene	1/32 in	1/4 in	19/64 in	3/8 in	100 ft	-20 °F to 150 °FF	Black	ASTM D2000 BC	3HCJ2
	1/16 in	3/8 in	1/4 in	1/2 in	10 ft	-20 °F to 150 °FF	Black	ASTM D2000 BC	38EH43
	1/16 in	3/8 in	1/4 in	1/2 in	25 ft	-20 °F to 150 °FF	Black	ASTM D2000 BC	38EH44
	1/16 in	3/8 in	1/4 in	1/2 in	50 ft	-20 °F to 150 °FF	Black	ASTM D2000 BC	38EH45
	1/16 in	3/8 in	1/4 in	1/2 in	100 ft	-20 °F to 150 °FF	Black	ASTM D2000 BC	3HCJ3
	1/8 in	15/32 in	23/64 in	3/8 in	100 ft	-20 °F to 150 °FF	Black	ASTM D2000 BC	3HCJ4
	3/16 in	9/16 in	15/32 in	3/4 in	100 ft	-20 °F to 150 °FF	Black	ASTM D2000 BC	3HCJ5
	1/4 in	19/32 in	27/64 in	19/16 in	100 ft	-20 °F to 150 °FF	Black	ASTM D2000 BC	3HCJ6
	3/8 in	25/32 in	43/64 in	1 in	100 ft	-20 °F to 150 °FF	Black	ASTM D2000 BC	3HCJ8
	Silicone	1/16 in	3/8 in	1/4 in	1/2 in	100 ft	-90 °F to 450 °FF	Red	ASTM D2000 GE
1/8 in		15/32 in	23/64 in	3/8 in	100 ft	-90 °F to 450 °FF	Red	ASTM D2000 GE	3HC71
Style G									
Neoprene	1/32 in	5/32 in	11/64 in	1/4 in	100 ft	-20 °F to 150 °FF	Black	ASTM D2000 BC	3HC73
	1/16 in	7/32 in	13/64 in	5/16 in	100 ft	-20 °F to 150 °FF	Black	ASTM D2000 BC	3HC74
	1/8 in	9/32 in	15/64 in	3/8 in	100 ft	-20 °F to 150 °FF	Black	ASTM D2000 BC	3HC75
Style I									
EPDM	1/4 in	5/8 in	3/4 in	19/16 in	100 ft	-40 °F to 210 °FF	Black	ASTM D2000 BA	3HCL2
	3/8 in	3/8 in	3/4 in	19/16 in	100 ft	-40 °F to 210 °FF	Black	ASTM D2000 BA	3HCL3



Sign in to **Grainger.com**® to see **YOUR Pricing** and **MORE**