



Round Tube



Square Tube



Standard I-Beam



U-Channel



Cylindrical Rod



## Dynaform Structural Shapes

- Temp. range: -100° to 150°F
- Tensile strength: 30,000 psi; except cylindrical rods are 100,000 psi

Resin material is ideal for platforms, walkways, and equipment support. Isophthalic polyester resin formulation (ISOFR) provides a low flame-spread rating of 25 or less (when tested according to ASTM E-84). Cylindrical rods are made of olive green isophthalic polyester (ISO) resin which resists a wide array of chemicals and highly acidic conditions. Not fire retardant.

Inside Dia.	Outside Dia.	Outside Dia. Tolerance	Wall Thickness	Wall Thickness Tolerance	5-Ft. L* Item No.	10-Ft. L† Item No.
<b>Round Tubes</b>						
¾ in	1 in	+/-0.020 in	¼ in	+/-0.019 in	4ATR2	4ATR5
1 ¼ in	1 ½ in	+/-0.020 in	¼ in	+/-0.019 in	4ATR3	4ATR6
1 ½ in	2 in	+/-0.040 in	¼ in	+/-0.038 in	4ATR4	4ATR7

Inside Square	Outside Square	Outside Square Tolerance	Wall Thickness	Wall Thickness Tolerance	5-Ft. L* Item No.	10-Ft. L† Item No.
<b>Square Tubes</b>						
¾ in	1 in	+/-0.020 in	0.125 in	+/-0.019 in	4ATN8	4ATP5
1 ¼ in	1 ½ in	+/-0.020 in	0.125 in	+/-0.019 in	4ATN9	4ATP6
1 ¾ in	2 in	+/-0.020 in	0.125 in	+/-0.019 in	4ATP1	4ATP7
1 ½ in	2 in	+/-0.020 in	0.25 in	+/-0.038 in	4ATP2	4ATP8
2 ½ in	3 in	+/-0.040 in	0.25 in	+/-0.038 in	4ATP3	4ATP9
3 ½ in	4 in	+/-0.040 in	0.25 in	+/-0.038 in	4ATP4	4ATR1

H	W	Thickness	Length Tolerance	10 ft L Item No.	10 FT L Item No.	20 ft L Item No.	20 FT L Item No.
<b>Standard I-Beams</b>							
4 in	2 in	¼ in	—	4AUU2	—	4AUU1	—
6 in	3 in	¼ in	—	4AUU4	—	4AUU3	—
<b>Wide Flanged I-Beams</b>							
4 in	4 in	¼ in	+/-0.125 in	—	4AUT5	4AUT4	—
6 in	6 in	¼ in	+/-0.125 in	4AUT7	—	4AUT6	—
6 in	6 in	¾ in	+/-0.125 in	4AUT9	—	—	4AUT8

Leg Length	Base Width	Base Width Tolerance	Wall Thickness	Wall Thickness Tolerance	5-Ft. L* Item No.	10-Ft. L† Item No.
<b>U-Channels</b>						
¾ in	2 in	+/-0.094 in	¼ in	+/-0.010 in	4ATM3	4ATN1
¾ in	3 in	+/-0.094 in	¼ in	+/-0.010 in	4ATM4	4ATN2
1 ½ in	4 in	+/-0.094 in	¼ in	+/-0.010 in	4ATM5	4ATN3
1 ½ in	6 in	+/-0.094 in	¼ in	+/-0.010 in	4ATM6	4ATN4
1 ½ in	6 in	+/-0.094 in	¾ in	+/-0.010 in	4ATM7	4ATN5
2 ¾ in	8 in	+/-0.094 in	¾ in	+/-0.010 in	4ATM8	4ATN6
2 ¾ in	10 in	+/-0.094 in	¾ in	+/-0.010 in	4ATM9	4ATN7

Dia.	Dia. Tolerance	5-Ft. L* Item No.	10-Ft. L† Item No.
<b>Cylindrical Rods</b>			
¼ in	+/-0.010 in	4ATK9	4ATL6
¾ in	+/-0.010 in	4ATL1	4ATL7
¾ in	+/-0.010 in	4ATL2	4ATL8
¾ in	+/-0.010 in	4ATL3	4ATL9
1 in	+/-0.010 in	4ATL4	4ATM1
1 ¼ in	+/-0.010 in	4ATL5	4ATM2

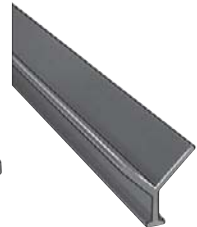
\* Length Tolerance ±0.1875", † Length Tolerance ±0.125"; ‡ Length tolerance: ±0.094"



90°



EZ Angle® Concrete Embedment



Y Concrete Embedment



## Dynaform Fiberglass Angle

- Leg length tolerance: ±0.094"
- Thickness tolerance: ±0.010"
- Tensile strength: 30,000 psi

**90°**—Use for constructing structural support systems, including platforms, walkways, and equipment support. Made from an isophthalic polyester fire-retardant resin (ISOFR).

- Temp. range: -100° to 150°F

**EZ Angle Concrete Embedment**—Install at edge of concrete trenches to support trench gratings. Made from a fire-retardant vinyl ester (VEFR) resin.

- Temp. range: -100° to 180°F

**Y Concrete Embedment**—Use in place of steel concrete embedment angles. Install at edge of trenches where gratings are supported. Made from a fire-retardant vinyl ester (VEFR) resin.

- Temp. range: -100° to 180°F

Leg Length	5 ft L Item No.	10 ft L Item No.	Leg Length	20 ft L Item No.
<b>90 Degree</b>				
<b>¼ in Thick</b>				
1 in x 1 in	4ATH7	4ATJ8	<b>EZ Angle Concrete Embedment</b>	
<b>¼ in Thick</b>				
1 ½ in x 1 ½ in	4ATH8	4ATJ9	1 in x 1 ½ in	4AUR9
2 in x 2 in	4ATH9	4ATK1	2 in x 1 ½ in	4AUR8
3 in x 3 in	4ATJ1	4ATK2	<b>Y Concrete Embedment</b>	
4 in x 4 in	4ATJ3	4ATK4	<b>¼ in Thick</b>	
<b>¾ in Thick</b>				
3 in x 3 in	4ATJ2	4ATK3	1 in x 1 ½ in	4AUT1
4 in x 4 in	4ATJ4	4ATK5	2 in x 1 ½ in	4AUT3
6 in x 6 in	4ATJ6	4ATK7	<b>½ in Thick</b>	
<b>½ in Thick</b>				
4 in x 4 in	4ATJ5	4ATK6		
6 in x 6 in	4ATJ7	4ATK8		



Threaded Rod



Square Nut



## Fiberglass Accessories

- Threaded rod temp. range: -100° to 180°F



Hex Nut

Description	Size	Material	Brand	Item No.
Fully Threaded Rod	½"-13 Thread, 4 ft	Vinyl Ester Resin	—	4AUU5
	¾"-10 Thread, 4 ft			4AUU6
Square Nut	½"-13 Thread	Isoplast	Dynaform	4AUU7
	¾"-10 Thread			4AUU8
Hex Nut	½"-13 Thread	Nylon	—	4AUU2
	¾"-10 Thread			4AUU3
Flat Washer	½" I.D., 1 ¾" O.D.	—	—	4AUU9
	¾" I.D., 1 ¾" O.D.			4AUU1



## Safe-T-Stand Portable Work Platforms

- Max. weight: 300 lb.
- Max. temp.: 150°F
- Green color
- FGI-AM resin

Provide a comfortable working height for work stations. A/O grit platform surface with slip-resistant rubber feet.



H	Base Width	Base Length	Item No.
2'	25 ¾"	25 ¾"	4ATZ8
4'	25 ¾"	25 ¾"	4ATZ9
6'	26 ½"	26 ½"	4AUU1