

### Knife Thread Inserts

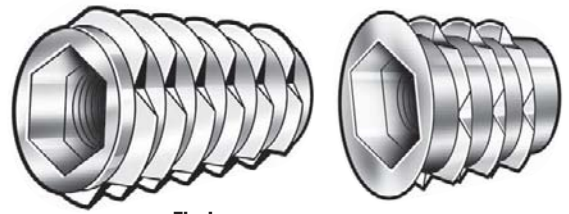
- Brass
- Use with hardwoods

External knife threads with slotted drive hold firm without crushing.

Note: Stainless steel knife thread inserts are available on Grainger.com®; search for "knife thread inserts."



Internal Thread Size	Length	Drill Size	Power Driver	Item No.	Pkg. Qty.
4-40	3/8 in	1/4 in	—	4ZU54	50
	3/8 in	1/4 in	—	4KXP3	250
6-32	3/8 in	1/4 in	4ZE51	4ZU55	25
	3/8 in	1/4 in	4ZE51	4KXP4	250
8-32	3/8 in	1/4 in	4ZE52	4ZU56	50
	3/8 in	1/4 in	4ZE52	4KXP5	250
10-24	1/2 in	3/8 in	4ZE53	4ZU58	25
	1/2 in	3/8 in	4ZE53	4KXP6	250
10-32	1/2 in	3/8 in	4ZE53	4ZU59	25
	1/2 in	3/8 in	4ZE53	4KXP7	250
1/4-20	1/2 in	25/64 in	4ZE54	4ZU61	25
	1/2 in	3/8 in	4ZE54	4KXP8	250
1/4-28	1/2 in	3/8 in	4ZE54	4ZU62	25
5/16-18	3/8 in	1/2 in	4ZE55	4ZU64	25
	3/8 in	1/2 in	4ZE55	4KXP9	100
5/16-24	3/8 in	1/2 in	4ZE55	4ZU65	25
3/8-16	3/8 in	1/2 in	4ZE56	4ZU66	25
	3/8 in	1/2 in	4ZE56	4KXR1	100
3/8-24	3/8 in	1/2 in	4ZE56	4ZU67	25
M4 x 0.7	3/8 in	1/4 in	4ZE52	4ZU69	10
M5 x 0.8	1/2 in	3/8 in	4ZE53	4ZU70	10
M6 x 1	1/2 in	3/8 in	4ZE54	4ZU71	10
M8 x 1.25	5/8 in	1/2 in	4ZE55	4ZU72	10



### Hex Drive Thread Inserts

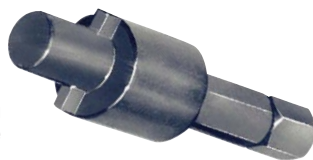
- Die cast zinc alloy
- Use with soft woods, composition board, and MDF
- Install with a standard hex key or power driver

Flush models are for installation on curves or below surfaces. Flanged models help control the insert depth. For knock-down furniture, shipping crates, and cabinetry.

Internal Thread Size	Length	Drill Size	Hex Key Size	Power Driver	Item No.	Pkg. Qty.
<b>Flush</b>						
8-32	25/64 in	1/64 in	M4	4ZU82	4ZU75	100
10-24	3/64 in	9/32 in	M5	4ZU85	4ZU76	50
10-32	3/64 in	5/32 in	M5	4ZU85	4ZU77	50
1/4-20	25/64 in	25/64 in	M6	4ZU86	4ZU78	100
	25/32 in	25/64 in	M6	4ZU86	4ZU79	100
5/16-18	65/64 in	7/16 in	M8	4ZU87	4ZU83	50
	65/64 in	7/16 in	M8	4ZU87	4ZU84	50
M6 x 1.0	33/64 in	25/64 in	M6	4ZU86	4ZU73	50
	25/32 in	25/64 in	M6	4ZU86	4ZU74	50
M8 x 1.25	33/64 in	7/16 in	M8	4ZU87	4ZU80	25
	25/32 in	7/16 in	M8	4ZU87	4ZU81	25
<b>Flanged</b>						
8-32	25/64 in	1/64 in	M4	4ZU82	4ZU89	100
10-24	25/64 in	9/32 in	M5	4ZU85	4ZU90	50
10-32	25/64 in	9/32 in	M5	4ZU85	4ZU91	50
	1/16 in	9/32 in	M5	4ZU85	4ZU92	50
	33/64 in	9/32 in	M5	4ZU85	4ZU93	50
	25/32 in	9/32 in	M5	4ZU85	4ZU94	25
1/4-20	33/64 in	25/64 in	M6	4ZU86	4ZU95	100
	25/32 in	25/64 in	M6	4ZU86	4ZU96	100
3/8-16	65/64 in	3/8 in	M10	4ZU87	4ZU98	25
	65/64 in	3/8 in	M10	4ZU87	4ZU99	25
5/16-18	33/64 in	7/16 in	M8	4ZU86	4ZU94	50
	65/64 in	7/16 in	M8	4ZU86	4ZU95	25
M6 x 1.0	33/64 in	25/64 in	M6	4ZU86	4ZU87	50
	25/32 in	25/64 in	M6	4ZU86	4ZU88	50
M8 x 1.25	33/64 in	7/16 in	M8	4ZU87	4ZU90	25
	25/32 in	7/16 in	M8	4ZU87	4ZU91	25

### Thread Insert Power Drivers

Install thread inserts without engaging the threads. Drivers ensure inserts are installed at the proper depth.



Use With Internal Thread Size	Item No.	Use With Internal Thread Size	Item No.
1/4 in Shank		3/8 in Shank	
#6	4ZE51	3/8 in and M10	4ZE56
#8, and M5, M4	4ZE52	1/8 in and M12	4ZE57
#10	4ZE53	1/2 in and 3/8 in	4ZE58
1/4 in and M6	4ZE54	3/8 in and M16	4ZE59
5/16 in and M8	4ZE55	3/4 in	4ZE60
M4 Hex	4ZU82	M8 Hex	4ZU81
M5 Hex	4ZU85	M10 Hex	4ZU83
M6 Hex	4ZU86		

Internal Thread Size	External Thread Size	Length	Wall Type	Drill Size	Power Driver	Item No.	Pkg. Qty.
4-40	10-32	1/4 in	Heavy	5/32 in	—	4ZY16	10
	1/4-20	5/32 in	Heavy	7	4ZE51	4ZB93	10
6-32	M6 x 1	6.5 mm	Heavy	5.1mm	4ZE51	4ZE61	5
	5/16-18	19/64 in	Heavy	F	4ZE52	4ZB94	10
8-32	M8 x 1.25	7.5 mm	Heavy	6.9mm	4ZE52	4ZE62	5
	5/16-18	5/16 in	Thin	I	4ZE53	4ZB81	10
10-24	3/8-16	13/32 in	Heavy	9/16 in	4ZE53	4ZE14	10
	M8 x 1.25	7.5 mm	Heavy	6.9mm	4ZE53	4ZE63	5
	5/16-18	5/16 in	Thin	I	4ZE53	4ZB82	10
10-32	3/8-16	13/32 in	Heavy	9/16 in	4ZE53	4ZE15	10
	M8 x 1.25	7.5 mm	Heavy	6.9mm	4ZE53	4ZE14	5
	5/16-18	5/16 in	Thin	Q	4ZE54	4ZB83	10
1/4-20	7/8-14	7/16 in	Heavy	23/64 in	4ZE54	4ZE16	10
	M10 x 1.5	10.5 mm	Heavy	8.6mm	4ZE54	4ZE65	5
	1/2-13	3/64 in	Extra Heavy	25/64 in	4ZE54	4ZE30	10
1/4-28	3/8-16	3/8 in	Thin	Q	4ZE54	4ZB84	10
	1/16-14	7/16 in	Heavy	25/64 in	4ZE54	4ZE17	10
	1/16-14	7/16 in	Thin	X	4ZE55	4ZB85	10
5/16-18	1/2-13	3/64 in	Heavy	23/64 in	4ZE55	4ZE18	10
	M12 x 1.75	12.5 mm	Heavy	10.4mm	4ZE55	4ZE66	5
	3/8-12	3/64 in	Extra Heavy	3/64 in	4ZE55	4ZE31	10
	1/16-14	7/16 in	Thin	X	4ZE55	4ZB86	10
5/16-24	1/2-13	3/64 in	Heavy	23/64 in	4ZE55	4ZE19	10
	1/2-13	1/2 in	Thin	25/64 in	4ZE56	4ZB87	10
	3/8-12	3/64 in	Heavy	3/64 in	4ZE56	4ZE20	10
3/8-16	M16 x 2	17 mm	Heavy	14mm	4ZE56	4ZE67	5
	5/8-11	23/32 in	Extra Heavy	13/32 in	4ZE56	4ZE32	5
	1/2-13	1/2 in	Thin	25/64 in	4ZE56	4ZB88	10
3/8-24	3/8-12	33/64 in	Heavy	33/64 in	4ZE56	4ZE21	10
	5/16-12	5/16 in	Thin	33/64 in	4ZE57	4ZB89	5
7/16-14	5/8-11	23/32 in	Heavy	17/32 in	4ZE57	4ZE22	5
	3/8-12	3/16 in	Thin	33/64 in	4ZE57	4ZB90	5
7/16-20	5/8-11	23/32 in	Heavy	17/32 in	4ZE57	4ZE23	5
	3/8-11	5/8 in	Thin	33/64 in	4ZE58	4ZB91	5
	3/4-10	23/32 in	Heavy	23/32 in	4ZE58	4ZE24	5
	3/4-10	1 in	Heavy	23/32 in	4ZE58	4ZE25	5
1/2-13	M16 x 2	1 mm	Heavy	14mm	4ZE58	4ZE68	5
	7/8-9	11/16 in	Extra Heavy	4ZE58	4ZE33	5	
	5/8-11	5/8 in	Thin	33/64 in	4ZE58	4ZB92	5
1/2-20	3/4-10	23/32 in	Heavy	23/32 in	4ZE58	4ZE26	5
	3/16-12	3/4-10	Heavy	23/32 in	4ZE58	4ZE27	5
	3/16-12	3/4-10	Heavy	23/32 in	4ZE58	4ZE28	5
	7/8-9	11/16 in	Heavy	49/64 in	4ZE59	4ZB95	5
	7/8-9	1 1/8 in	Heavy	49/64 in	4ZE59	4ZB96	5
5/8-11	1-8	25/32 in	Extra Heavy	7/8 in	—	4ZE29	5

### E-Z LOK Self-Locking Thread Inserts

- Carbon steel
- Adhesive on the external threads activates immediately after installation, locking the insert into place and sealing against liquids and gases to pressures of 6000 psi.



Note: Internal thread class for internal thread sizes is 2B; 6H for metric sizes. External thread class for external inch thread sizes is 2A; 6G for metric sizes.

303 stainless steel available; on Grainger.com®, search for "303 stainless steel self-locking thread inserts."

Internal Thread Size	External Thread Size	Length	Wall Type	Drill Size	Power Driver	Item No.	Pkg. Qty.	
3/8-16	1-8	1 1/8 in	Heavy	49/64 in	4ZE59	4ZB97	5	
3/4-10	1-8	25/32 in	Heavy	7/8 in	4ZE60	4ZB98	5	
3/4-16	1-8	25/32 in	Heavy	7/8 in	4ZE60	4ZB99	5	
1-8	1 1/4-7	1 1/8 in	Heavy	1 1/8 in	—	4ZE10	5	
1-8	1 1/4-7	1 1/8 in	Heavy	1 1/8 in	—	4ZE11	5	
1-8	1 1/8-12	1 1/4 in	Heavy	1 1/8 in	—	4ZE12	5	
1-14	1 1/8-12	1 1/4 in	Heavy	1 1/8 in	—	4ZE13	5	
M3 x 0.5	M6 x 1	6.5 mm	Heavy	5.1mm	—	4ZE38	10	
M4 x 0.7	M8 x 1.25	7.5 mm	Heavy	6.9mm	4ZE52	4ZE39	10	
M5 x 0.8	M8 x 1.25	7.5 mm	Heavy	6.9mm	4ZE52	4ZE40	10	
M6 x 1	M10 x 1.5	10.5 mm	Heavy	8.6mm	4ZE54	4ZE41	10	
	3/8-16	13/32 in	Heavy	9/16 in	4ZE54	4ZE42	10	
M8 x 1.25	M12 x 1.75	12.5 mm	Heavy	10.4mm	4ZE55	4ZE43	5	
	1/2-13	3/64 in	Heavy	23/64 in	4ZE55	4ZE44	10	
M10 x 1.25	5/16-12	33/64 in	Heavy	33/64 in	4ZE56	4ZE45	10	
	M16 x 2	17 mm	Heavy	14mm	4ZE56	4ZE46	5	
M10 x 1.5	3/4-10	23/32 in	Heavy	23/32 in	4ZE56	4ZE47	5	
	M14 x 2	7/8-9	Heavy	49/64 in	—	4ZE72	5	
	M16 x 2	M24 x 3	20 mm	Heavy	21mm	4ZE59	4ZE36	5
	1-8	25/32 in	Heavy	7/8 in	4ZE59	4ZE73	5	
M20 x 2.5	M36 x 4	30 mm	Heavy	33mm	—	4ZE37	5	