



For more information on Plastics, see page 2107.

Plastic Angles

■ 90° of bend

Leg Length	CHOOSE: Length	CHOOSE: Plastic Thickness	CHOOSE: Color	Plastic Clarity	Item No.
Chemical-Resistant PVC Type 1 Plastic Angles					
1/2 in x 1/2 in	1 ft, 2 ft, 3 ft, 5 ft, 6 ft	0.08 in, 0.0625 in	Gray, Dark Gray	Opaque	K6900
3/4 in x 1 1/2 in	1 ft, 2 ft, 3 ft, 5 ft, 6 ft, 10 ft	0.08 in, 0.15625 in, 0.0625 in	Gray, Dark Gray	Opaque	K6904
3/4 in x 3/4 in	1 ft, 2 ft, 3 ft, 6 ft	0.08 in	Gray	Opaque	K6906
3/4 in x 3 in	1 ft, 2 ft, 3 ft, 6 ft	0.125 in	Gray	Opaque	K6905
1 in x 1 in	1 ft, 2 ft, 3 ft, 5 ft, 6 ft, 10 ft	0.125 in, 0.25 in	Gray, Dark Gray	Opaque	K6899
1 1/4 in x 1 1/4 in	1 ft, 2 ft, 3 ft, 5 ft, 6 ft	0.125 in, 0.1875 in, 0.25 in	Gray, Dark Gray	Opaque	K6898
1 1/2 in x 1 1/2 in	1 ft, 2 ft, 3 ft, 5 ft, 6 ft, 10 ft	0.125 in, 0.1875 in, 0.25 in	Gray, Dark Gray	Opaque	K6897
2 in x 2 in	1 ft, 2 ft, 3 ft, 5 ft, 6 ft, 10 ft	0.08 in, 0.125 in, 0.1875 in, 0.25 in	Gray, Dark Gray	Opaque	K6902
2 1/2 in x 2 1/2 in	1 ft, 2 ft, 3 ft, 6 ft	0.28125 in	Gray	Opaque	K6901
3 1/2 in x 3 1/2 in	1 ft, 2 ft, 3 ft, 6 ft	0.28125 in	Gray	Opaque	K6903
Clear Impact-Resistant Polycarbonate Plastic Angles					
1/2 in x 1/2 in	1 ft, 2 ft, 3 ft, 6 ft	0.05 in	Clear	Clear	K6896
1 in x 1 in	1 ft, 2 ft, 3 ft, 6 ft	0.05 in	Clear	Clear	K6895
1 1/2 in x 1 1/2 in	1 ft, 2 ft, 3 ft, 6 ft	0.05 in	Clear	Clear	K6894



Plastic Snap-Ons

- UHMW Polyethylene
- Standard Grade
- 10 ft
- +0.125/-0.000 in Length Tolerance
- White

Plastic Height	Top Opening Width	Inside Width	Inside Height	Inside Base Width	Plastic Width	Item No.
1 1/2 in	1/2 in	3/4 in	1/4 in	1/16 in	5/8 in	2NJF1
1/2 in	3/8 in	1/4 in	3/8 in	13/64 in	1/2 in	2NJE8
1/2 in	1/2 in	3/8 in	3/8 in	1/16 in	1/2 in	2NJF2
3/8 in	3/8 in	3/8 in	1/2 in	1 1/64 in	3/4 in	2NJE9



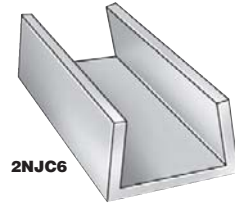
Plastic Full Rounds

- UHMW Polyethylene
- Standard Grade
- 10 ft
- +0.125/-0.000 in Length Tolerance
- White

Inside Radius	Outside Radius	Opening Angle	Item No.
5/16 in	1/16 in	90°	2NJD7
1 1/2 in	1/2 in	90°	2NJD8



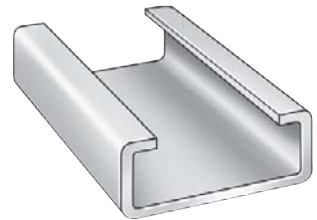
Plastic U-Shaped Channels



Plastic Length	Outside Base Width	Outside Leg Length	Inside Base Width	Inside Leg Length	Color	Plastic Clarity	Item No.
Polycarbonate							
1 ft	0.235 in	0.3 in	0.135 in	0.25 in	Clear	Clear	60DP48
	0.365 in	0.345 in	0.265 in	0.295 in	Clear	Clear	60DP49
	0.49 in	0.4 in	0.39 in	0.35 in	Clear	Clear	60DP50
2 ft	0.235 in	0.3 in	0.135 in	0.25 in	Clear	Clear	60DP45
	0.365 in	0.345 in	0.265 in	0.295 in	Clear	Clear	60DP46
	0.49 in	0.4 in	0.39 in	0.35 in	Clear	Clear	60DP47
3 ft	0.235 in	0.3 in	0.135 in	0.25 in	Clear	Clear	60DP42
	0.365 in	0.345 in	0.265 in	0.295 in	Clear	Clear	60DP43
	0.49 in	0.4 in	0.39 in	0.35 in	Clear	Clear	60DP44
6 ft	0.235 in	0.3 in	0.135 in	0.25 in	Clear	Clear	60DP39
	0.365 in	0.345 in	0.265 in	0.295 in	Clear	Clear	60DP40
	0.49 in	0.4 in	0.39 in	0.35 in	Clear	Clear	60DP41
PVC Type 1							
5 ft	0.51 in	0.594 in	—	—	Dark Gray	Opaque	1UNJ3
	1.14 in	1.656 in	—	—	Dark Gray	Opaque	1UNJ7
	2.51 in	1.469 in	—	—	Dark Gray	Opaque	1UNJ9
	3.54 in	0.781 in	—	—	Dark Gray	Opaque	1UNK1
UHMW Polyethylene							
10 ft	1 in	0.75 in	0.5 in	0.375 in	White	Opaque	2NJC4
	1.25 in	0.734 in	1 in	0.609 in	White	Opaque	2NJC6
	1.5 in	0.875 in	1 in	0.5 in	White	Opaque	2NJC3
	2 in	1 in	1.5 in	0.625 in	White	Opaque	2NJC2
	2.5 in	1 in	2 in	0.625 in	White	Opaque	2NJC1
	3 in	1 in	2.25 in	0.5 in	White	Opaque	2NJC5
	3 in	1 in	2.5 in	0.625 in	White	Opaque	2NJ9A
	4.25 in	1.25 in	3.5 in	0.875 in	White	Opaque	2NJA8

Plastic C Sections

- 1/8" wall thickness
- 10 ft. length
- UHMW Polyethylene
- White



Inside Base Width	Inside Leg Length	Bottom Opening Width	Item No.
1 in	1/4 in	3/8 in	2NJE3
1 in	1 in	1/2 in	2NJE6
1 1/2 in	1/2 in	1 in	2NJE5
2 in	1/4 in	1 3/8 in	2NJE4
2 in	1 1/2 in	1 1/2 in	2NJE7

Plastic Half Rounds

- UHMW Polyethylene
- Standard Grade
- White
- 10 ft
- +0.125/-0.000 in Length Tolerance

Inside Diameter	Outside Diameter	Bottom Opening Width	Wall Thickness	Item No.
1 1/2 in	2 3/32 in	1 1/4 in	0.093 in	2NJD5
3/8 in	1 1/16 in	3/8 in	0.093 in	2NJD4
3/4 in	1 1/16 in	1/2 in	0.093 in	2NJD3



DOWNLOAD
the Grainger
Mobile App!



- Easy Check Out
- Create Location-Based Lists
- Track Orders
- Search by Image



Apple, the Apple logo and iPhone are trademarks of Apple Inc. App Store is a service mark of Apple Inc. Google Play is a trademark of Google Inc.

