

1-800-GRAINGER (472-4643)

## Cylindrical Vibration Isolators

Isolators are compression-mounted to control noise, vibration, and shock. 50 durometer, natural rubber pads are chemically bonded to steel with superior abrasion resistance and high tensile strength. Grade 5 screws are clear, zinc-plated.

Max. Load Downward Compression (lb.)	Max. Load Sideways Shear (lb.)	Cylinder Dia.	H	Thread Length	Thread Size	Item No.
<b>Female Threads Both Ends</b>						
25 lb	5 lb	3/8 in	1/2 in	—	#8-32	2NPD2
55 lb	8 lb	1 in	1 in	—	3/8"-18	2NPD3
165 lb	55 lb	2 in	1.63 in	—	3/8"-16	2NPD5
170 lb	40 lb	1 1/2 in	1 in	—	M8 x 1.25	2NPD7
170 lb	40 lb	1 1/2 in	1 in	—	3/8"-18	2NPD6
180 lb	45 lb	2 in	1.38 in	—	3/8"-16	2NPD4
210 lb	30 lb	1 in	1/2 in	—	1/4"-20	2NPD8
720 lb	140 lb	3 1/8 in	2 1/4 in	—	1/2"-13	2NPD9
<b>Female Threads Top End, Male Threads, Bottom End</b>						
7 lb	1 lb	3/8 in	1/2 in	1/2 in	#8-32	2NPF1
20 lb	3 lb	3/8 in	1/2 in	1/2 in	#8-32	2NPF2
31 lb	4 1/2 lb	3/8 in	0.83 in	1/2 in	1/4"-20	2NPF3
50 lb	15 lb	1 in	3/4 in	1/2 in	1/4"-20	2NPF4
50 lb	15 lb	1 in	3/4 in	1/2 in	M6 x 1	2NPF5
55 lb	8 lb	1 in	1 in	3/4 in	3/8"-18	2NPF6
55 lb	8 lb	1 in	1 in	3/4 in	M8 x 1.25	2NPF7
75 lb	25 lb	1 in	1/2 in	1/2 in	1/4"-20	2NPF8
80 lb	15 lb	1 1/8 in	1 in	3/4 in	3/8"-18	2NPF9
125 lb	20 lb	1 1/2 in	1 in	3/4 in	3/8"-18	2NPF1
125 lb	20 lb	1 1/2 in	1 in	3/4 in	M8 x 1.25	2NPF2
165 lb	55 lb	2 in	1.63 in	3/4 in	3/8"-16	2NPF5
165 lb	55 lb	2 in	1.63 in	3/4 in	M10 x 1.50	2NPF6
180 lb	45 lb	2 in	1.38 in	3/4 in	3/8"-16	2NPF3
180 lb	45 lb	2 in	1.38 in	3/4 in	M10 x 1.50	2NPF4
720 lb	140 lb	3 1/8 in	2 1/4 in	1 1/4 in	1/2"-13	2NPF7
720 lb	140 lb	3 1/8 in	2 1/4 in	1 1/4 in	M12 x 1.75	2NPF8
<b>Male Threads, Bottom End</b>						
20 lb	—	1 5/8 in	0.83 in	1/2 in	1/4"-20	2NPF9

Note: Not for wall- or ceiling-suspended installations. Not suitable for excess exposure to oil, grease, and solvents, or temps. over 150°F.

Max. Load Downward Compression (lb.)	Max. Load Sideways Shear (lb.)	Cylinder Dia.	H	Thread Length	Thread Size	Item No.
<b>Male Threads Both Ends</b>						
7 lb	1 lb	3/8 in	1/2 in	1/2 in	#8-32	2NNZ5
20 lb	3 lb	3/8 in	1/2 in	1/2 in	#8-32	2NNZ6
40 lb	6 lb	3/4 in	3/4 in	3/4 in	1/4"-20	2NNZ7
40 lb	6 lb	3/4 in	3/4 in	3/4 in	M6 x 1	2NNZ8
45 lb	8 lb	1 in	1 in	3/4 in	3/8"-18	2NNZ9
50 lb	9 lb	1 in	3/4 in	1/2 in	1/4"-20	2NPA1
50 lb	9 lb	1 in	3/4 in	1/2 in	M6 x 1	2NPA2
50 lb	9 lb	1 in	3/4 in	3/4 in	3/8"-18	2NPA3
50 lb	9 lb	1 in	3/4 in	3/4 in	M8 x 1.25	2NPA4
75 lb	12 lb	1 1/4 in	3/4 in	1/2 in	1/4"-20	2NPA5
75 lb	12 lb	1 1/4 in	3/4 in	3/4 in	3/8"-18	2NPA6
75 lb	12 lb	1 1/4 in	3/4 in	3/4 in	M8 x 1.25	2NPA7
80 lb	15 lb	1 1/8 in	1 in	3/4 in	3/8"-18	2NPA8
125 lb	20 lb	1 1/2 in	1 in	3/4 in	3/8"-18	2NPA9
125 lb	20 lb	1 1/2 in	1 in	3/4 in	M8 x 1.25	2NPC1
125 lb	20 lb	1 1/2 in	1 in	3/4 in	3/8"-16	2NPC2
125 lb	20 lb	1 1/2 in	1 in	3/4 in	M10 x 1.50	2NPC3
165 lb	55 lb	2 in	1.63 in	3/4 in	3/8"-16	2NPC5
180 lb	45 lb	2 in	1.38 in	3/4 in	3/8"-16	2NPC4
370 lb	90 lb	2 in	3/4 in	1 1/4 in	1/2 in	2NPC6
370 lb	90 lb	2 in	3/4 in	1 1/4 in	M10 x 1.50	2NPC7
460 lb	155 lb	2 1/2 in	0.83 in	1 1/4 in	3/8"-16	2NPC8
720 lb	140 lb	3 1/8 in	2 1/4 in	1 1/4 in	1/2"-13	2NPC9
720 lb	140 lb	3 1/8 in	2 1/4 in	1 1/4 in	M12 x 1.75	2NPD1
<b>Male Threads Top End</b>						
60 lb	—	1 in	0.83 in	3/4 in	3/8"-18	2NPG3
80 lb	—	1 1/8 in	1 in	3/4 in	3/8"-18	2NPG1
80 lb	—	1 1/8 in	1 in	3/4 in	M8 x 1.25	2NPG2
125 lb	—	1 1/2 in	1 in	3/4 in	3/8"-18	2NPG4
125 lb	—	1 1/2 in	1 in	3/4 in	M8 x 1.25	2NPG5
310 lb	—	2 in	3/4 in	1 1/4 in	3/8"-16	2NPG6
310 lb	—	2 in	3/4 in	1 1/4 in	M10 x 1.50	2NPG7



**Female  
Threads  
Both Ends**



**Female Threads  
Top End,  
Male Threads  
Bottom End**



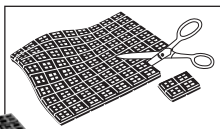
**Male Threads,  
Bottom End**



**Male Threads  
Both Ends**



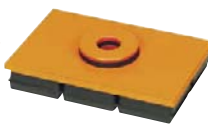
**Male Threads  
Top End**



**5XR47  
Super W**



**4C975  
Type A**



**4C974  
Type B**



**5C027  
Neoprene & Cork**



**20UZ23  
Nitrile Pad**

L	W	H	Max. Steady Load	Item No.	Pkg. Qty.
<b>Neoprene - Mini Super W 2" x 2" Modules 45 Duro.</b>					
4 in	4 in	3/4 in	720 lb	4C973	2
6 in	6 in	3/4 in	1620 lb	5C022	1
18 in	18 in	3/4 in	180 per 2x2	4C972	1
<b>Neoprene - Super W 2" x 2" Modules 45 Duro.</b>					
2 in	2 in	3/4 in	180 lb	2LVR4	2
3 in	3 in	3/4 in	45 psi	2LVR5	2
4 in	4 in	3/4 in	720 lb	2LVR6	2
6 in	6 in	3/4 in	1620 lb	2LVR7	1
18 in	18 in	3/4 in	180 per 2x2	5XR47	1
<b>Neoprene - Super W 3" x 3" Modules 60 Duro.</b>					
3 in	3 in	3/4 in	600 lb	20UZ18	2
6 in	6 in	3/4 in	2400 lb	20UZ19	2
18 in	18 in	3/4 in	600 per 3x3	20UZ20	1
<b>Neoprene and Steel - Type A</b>					
4 in	4 in	1 1/4 in	800 lb	2LVP1	1
6 in	4 in	1 1/4 in	1200 lb	4C975	1
6 in	6 in	1 1/4 in	1800 lb	2LVP3	1
8 in	8 in	1 1/4 in	3200 lb	2LVP4	1
10 in	10 in	1 1/4 in	5000 lb	2LVP5	1
10 in	12 in	1 1/4 in	6000 lb	2LVP6	1

## Vibration Isolation Pads

**MASON INDUSTRIES**

Pads protect equipment from shaking and are designed for use when machines are bolted to the floor.

### NEOPRENE

Pad modules are easy to cut to size. Self-gasketing waffle pattern helps contain spills and improves suction and grip.

### Mini Super W

**Pads**—Provide 1/8" max. deflection.

**Super W Pads**—Provide 1/8" max. deflection.

### NEOPRENE AND STEEL

For concentrated loads such as heavy machines with small legs or formed sheet metal legs without a bottom surface.

**Type A**—Have a cemented steel plate between a bottom super waffle pad and top 1/4" friction pad.

**Type B**—Have a 3/4"-dia. center hole for bolting, no top friction pad. Includes 3/4" neoprene isolation washer cemented to a steel washer.

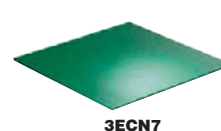
### NEOPRENE AND CORK

2 honeycombed neoprene sheets are adhered to a dense, granulated cork core.

### NITRILE PADS

Oil-resistant pads are great for applications with constant exposure to oil, grease, or gasoline.

L	W	H	Max. Steady Load	Item No.	Pkg. Qty.
<b>Neoprene and Steel - Type B</b>					
4 in	4 in	1 in	800 lb	2LVP7	1
6 in	4 in	1 in	1200 lb	4C974	1
6 in	6 in	1 in	1800 lb	2LVP9	1
8 in	8 in	1 in	3200 lb	2LVR1	1
10 in	10 in	1 in	5000 lb	2LVR2	1
<b>Neoprene and Cork</b>					
2 in	2 in	1 in	200 lb	5C027	2
3 in	3 in	1 in	450 lb	4C976	2
4 in	4 in	1 in	800 lb	4C977	2
6 in	6 in	1 in	1800 lb	5XR49	1
12 in	12 in	1 in	7200 lb	5C026	1
18 in	18 in	1 in	16,200 lb	5C025	1
<b>Nitrile Pads (Highest Oil Resistance)</b>					
6 in	6 in	3/8 in	7200 lb	20UZ21	2
18 in	18 in	3/8 in	200 psi	20UZ22	1
18 in	18 in	1/2 in	280 psi	20UZ23	1



**3ECN7  
AirLoc**



**3ECK4**

## Vibration Isolation Pads

Profile neoprene provides best isolation; flat neoprene provides better equipment stability. Nitrile provides greater vibration damping.

**Precut Pad Packs**—Provide 4 points of support. Include 4 primary pads and 4 shim pads. Use metal shim between pad surfaces to compensate different heights of equipment.

**Elastomer Sheets**—Reduce noise and vibration of equipment. Use whole or cut sheets to custom sizes.

L	W	H	Max. Steady Load	Item No.	Pkg. Qty.
<b>Neoprene Elastomer Sheets</b>					
19 1/16 in	1/2 in	1/2 in	58 psi	3ECL7	1
19 1/16 in	1 in	1 in	87 psi	3ECN2	1
39 1/16 in	1 in	1 in	87 psi	3ECN1	1
19 1/16 in	3/8 in	3/8 in	116 psi	3ECL9	1
19 1/16 in	3/8 in	3/8 in	464 psi	3ECL8	1
39 1/16 in	3/8 in	3/8 in	464 psi	3ECN8	1
39 1/16 in	3/8 in	3/8 in	464 psi	3ECN7	1
39 1/16 in	1 in	1 in	464 psi	3ECN9	1
19 1/16 in	1 in	1 in	464 psi	3ECP1	1
<b>Neoprene Precut Pad Packs - Pkg. of 4</b>					
2 in	2 in	3/4 in	8500 lb	3ECL3	4
4 in	4 in	1 1/4 in	2500 lb	3ECK5	4
6 in	4 in	3/4 in	20,000 lb	3ECL4	4
6 in	6 in	3/4 in	35,000 lb	3ECL5	4
8 in	8 in	3/4 in	90,000 lb	3ECL6	4
<b>Neoprene Precut Pad Packs - Pkg. of 8</b>					
2 in	2 in	1 1/8 in	1000 lb	3ECK4	8
6 in	6 in	1 1/8 in	4000 lb	3ECK6	8
8 in	8 in	1 1/8 in	10,000 lb	3ECK7	8
<b>Nitrile Elastomer Sheets</b>					
19 1/16 in	3/8 in	3/8 in	232 psi	3ECN4	1
39 1/16 in	3/8 in	3/8 in	232 psi	3ECN3	1
19 1/16 in	1 in	1 in	232 psi	3ECN6	1
39 1/16 in	1 in	1 in	232 psi	3ECN5	1
<b>Nitrile Precut Pad Packs - Pkg. of 4</b>					
2 in	2 in	3/4 in	3500 lb	3ECK8	4
4 in	4 in	3/4 in	8000 lb	3ECK9	4
6 in	6 in	3/4 in	14,000 lb	3ECL1	4
8 in	8 in	3/4 in	28,000 lb	3ECL2	4

Sign in to **Grainger.com®** to see **YOUR Pricing** and **MORE**