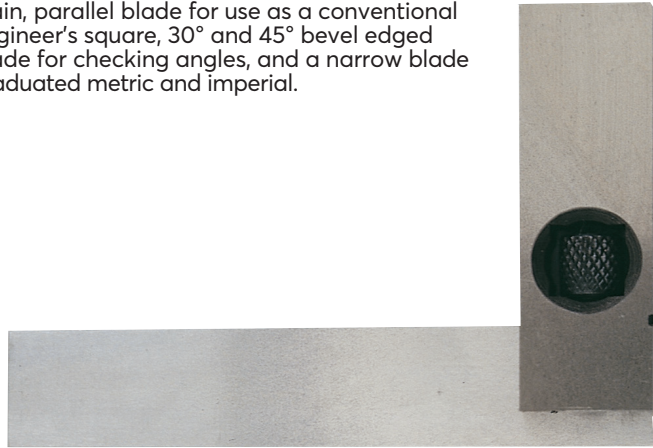


KENNEDY
QUALITY INDUSTRIAL TOOLING**Adjustable Steel Squares**

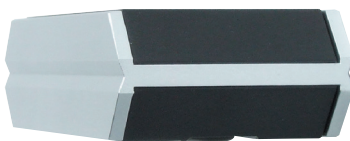
Made from hardened steel and precision ground. Supplied with three fully adjustable blades. One plain, parallel blade for use as a conventional engineer's square, 30° and 45° bevel edged blade for checking angles, and a narrow blade graduated metric and imperial.



Measured Length	Weight each	Order Code KEN-518	Price/1 THB
100mm/4"	340g	-4150K	3276.00
150mm/6"	410g	-4160K	3539.00

KENNEDY
QUALITY INDUSTRIAL TOOLING**Digital Protractor**

This digital protractor has a range of 360° split into 4 x 90° quadrants. It is simple to calibrate and the intelligent display changes orientation at 90° and 270° to remain readable. It has a 'V' groove on the top and bottom for easy placement on acute angled or cylindrical objects. 3V lithium battery gives up to 2000 hours use. Complete with a leatherette pouch that has a belt loop.



Product Number	Range	Resolution	Weight each	Order Code KEN-331	Price/1 THB
PDV360	360° (90° x 4)	0.1°	10.2kg	-4020K	3633.00

**OXFORD**
PRECISION**Engineer's Squares**

Manufactured from hardened steel that has been precisely ground to produce parallel edges so that the square has an exact right angle on both the inside and outside of the stock and blade, to ensure accuracy. Conforms to **BS939 Grade B**.



Size (mm)	tol. (mm)	Order Code OXD-340	Price/1 THB
75 (3")		-0030K	1176.00
100 (4")		-0040K	1309.00
150 (6")	+/- 0.016	-0060K	1755.00
225 (9")		-0090K	3584.00
300 (12")	+/- 0.024	-0120K	4608.00

OXFORD
PRECISION**Engineer's Levels**

Manufactured from hardened steel that has been precisely ground to produce parallel edges so that the square has an exact right angle on both the inside and outside of the stock and blade, to ensure accuracy. Conforms to **BS939 Grade B**.



Size (mm)	Order Code OXD-340	Price/1 THB
165 x 34	-4940K	4830.00
310 x 36	-4970K	8453.00