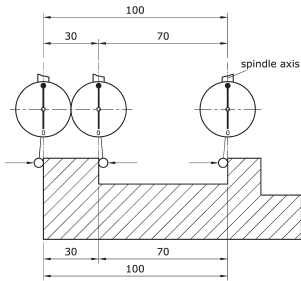


**KENNEDY** 3D Axis Gauging  
QUALITY INDUSTRIAL TOOLING

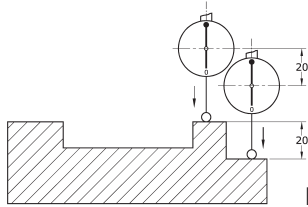
The New Generation of NC axis gauging equipment, for quick, accurate setting of all three axes (X, Y, Z) by analogue differential indicator. Suitable for all machine tools with CNC, NC or DRO and also for EDM/spark erosion tools - the stylus is electrically insulated from the spindle. Universal - one tool measures length, height and diameter and centre. The synchronous single needle allows greater needle displacement before reaching '12 o'clock'. A positive reading is given regardless of direction of axis movement. No calculations and no 'trial and error' involved. Increases production and efficiency, reduces job time and operator requirement. The stylus is designed to break on a 'nominal fracture' before the workpiece or tester can be damaged. Three plug in styli types can be changed in seconds without the use of special tools. Pre-adjusted to a concentricity of 0.01mm maximum.

**Indicator diameter:** 50mm.  
**Clamping shank diameter:** 16mm.

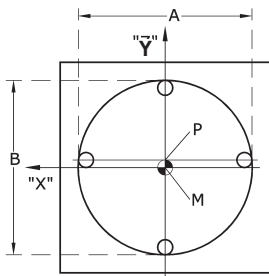
Scale for radial and axial approach



a. Measuring length



b. Measuring height



c. Establishing true centre and diameter of bores.

Insert stylus roughly in centre of bore, measure distance A and divide by 2 (P). Measure distance B in Y direction, across point P and divide by 2.

Result: true centre point (M). Repeat measuring of distance A.

**3D Axis Gauge**

Indicator Dia.	Effective Length	Shank Dia.	Weight each	Order Code	Price/1 THB
50mm	125mm	16mm	89g	KEN-302 -2010K	24150.00

**Stylii**

Conical precision plug-in mechanism. Insulated, no electrical conductivity. Designed-in nominal fracture point.

Type	Length mm	Anvil Dia.	Weight each	Order Code	Price/1 THB
Short	33	4.0	3g	KEN-302 -2130K	1901.00
Long	72	6.0	10g	-2170K	2846.00

