

## PCL Instant Air Couplings

Bayonet type range, positive seal, quick release couplings.  
**Nominal Bore:** 5.6mm  
**Flow rate @ 6 bar** - 54cfm @ 100psi  
**Maximum working pressure:** 17 bar/250psi  
**Adaptor series:** InstantAir

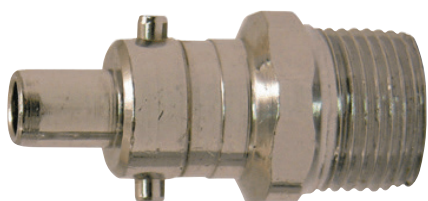


**Female Thread**

Product Number	Thread Size	Order Code PCL-259	Price/1 THB
<b>Male Thread</b>			
AC51CM	G $\frac{1}{4}$	-1978B	1020.00
AC51EM	G $\frac{3}{8}$	-1978D	1020.00
AC51JM	R $\frac{1}{2}$	-1978F	1430.00
<b>Female Thread</b>			
AC51EF	Rp $\frac{3}{8}$	-1978J	1020.00
<b>Hose Tailpiece</b>			
AC51R	6.35mm/ $\frac{1}{4}$	-1978N	1020.00
AC51S	7.9mm/ $\frac{5}{16}$	-1978Q	1100.00
AC51T	9.55mm/ $\frac{3}{8}$	-1978S	1100.00

## InstantAir Adaptors

Made in the UK. Bayonet style and are zinc plated steel.  
**Nominal Bore:** 5.6mm  
**Flow rate @ 6 bar** - 54 cfm @ 100psi  
**Maximum working pressure:** 17 bar/250psi  
**Coupling series:** InstantAir

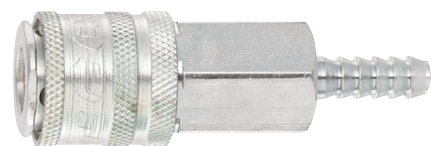


**Male Thread**

Product Number	Thread Size	Order Code PCL-259	Price/1 THB
<b>Hose Tailpiece</b>			
AA5110	6.35mm/ $\frac{1}{4}$	-1006P	690.00
AA5111	7.9mm/ $\frac{5}{16}$	-1006Q	690.00
AA5112	9.55mm/ $\frac{3}{8}$	-1006R	690.00

## XF Couplings

Offers excellent flow character providing the workshop with increase airflow when required.  
**Nominal Bore:** 7.4mm  
**Flow rate @ 6 bar** - 43cfm @ 100psi 2,200 l/min  
**Adaptor series:** XF Series  
**Interchangeable:** Cein 320, Legris 25/26, Norgren 234/238, Rectus 25/26, Schrader Intercheck 35



Product Number	Thread Size	Order Code PCL-259	Price/1 THB
<b>Hose Tailpiece</b>			
AC7106	6mm	-1982N	885.00
AC7108	8mm	-1982X	885.00
AC7109	9mm	-1982Z	885.00
AC7110	10mm	-1982P	885.00
AC7113	13mm	-1982L	885.00

## XF Coupling and Adaptor Air Tool Hose

Rubber PVC Alloy (PTE) compound that is available in popular cut lengths.  
**Burst pressure:** 63 bar  
**Working pressure @ 20°C:** 300 lbf/in<sup>2</sup> (21 bar)



Product Number	Length (Meters)	Inside Dia. (mm)	Order Code PCL-259	Price/1 THB
HA2140	5	10	-3318K	1958.00
HA2141	10	10	-3318L	2663.00
HA2142	15	10	-3318M	3338.00
HA2143	20	10	-3318N	3690.00

## 100 Series Coupling and Adaptor Air Tool Hose

Rubber PVC Alloy (PTE) compound. Complete with coupling and adaptor ends to suit 100 series.  
**Burst pressure:** 63 bar  
**Working pressure @ 20°C:** 300 lbf/in<sup>2</sup> (21 bar)



Product Number	Length (Meters)	Inside Dia. (mm)	Order Code PCL-259	Price/1 THB
HA2144	10	13	-3312K	5033.00
HA2150	15	13	-3312L	6705.00
HA2128	20	13	-3312M	8363.00
HA2152	30	13	-3312N	11693.00

## High Visibility Air Hoses with Fitting

Reinforced air hose manufactured in high visibility yellow material.  
**Burst pressure:** 63 bar  
**Working pressure @ 20°C:** 300 lbf/in<sup>2</sup> (21 bar)  
**Fittings:** Rp $\frac{1}{2}$  swivel ends



Product Number	Length (Meters)	Inside Dia. (mm)	Order Code PCL-259	Price/1 THB
HA2044HV	10	10	-3331M	2198.00
HA2046HV	20	10	-3331N	3488.00

## Air Line Whip Hoses

The vibrations caused in the use of air tools make a coupling connection subject to Health & Safety Regulations.  
 The international Standard (ISO 6150:1998) recommends a minimum of 300mm of flexible hose to be used between a vibrating tool and quick release coupling.  
**Burst pressure:** 63 bar  
**Working pressure @ 20°C:** 300 lbf/in<sup>2</sup> (21 bar).  
 Comprises of adaptor and male thread fitting



Product Number	Length (Meters)	Inside Dia. (mm)	Adaptor Series	Thread Size	Order Code PCL-259	Price/1 THB
HA2108	0.6	7	Standard	R $\frac{1}{4}$	-3300F	574.00
HA2124N	0.6	7	Standard	NPT $\frac{1}{4}$	-3300G	491.00
HA2149	0.6	10	Standard	R $\frac{1}{4}$	-3300H	724.00
HA2109	0.6	10	Standard	R $\frac{3}{8}$	-3300J	724.00
HA2155	0.4	8	Standard	R $\frac{3}{8}$	-3300K	724.00
HA2116	0.6	13	100 Series	R $\frac{1}{2}$	-3300L	1178.00
HA2132	0.6	10	XF Series	R $\frac{1}{4}$	-3300M	900.00

## Standard & Vertex Coupling Air Tool Hose

Rubber PVC Alloy (PTE) compound.  
**Burst pressure:** 63 bar  
**Working pressure @ 20°C:** 300lbf/in<sup>2</sup> (21bar)



Product Number	Length (Meters)	Inside Dia. (mm)	Order Code PCL-259	Price/1 THB
HA2133	5	8	-3305K	1853.00
HA2134	10	8	-3305L	2543.00
HA2139	15	8	-3305M	3225.00
HA2129	20	8	-3305N	3578.00
HA2135	5	10	-3310K	1650.00
HA2125	10	10	-3310L	2145.00
HA2137	15	10	-3310M	2625.00
HA2138	20	10	-3310N	3120.00

## Air Hose with Fittings

Rubber PVC Alloy (PTE). Coupling and adaptor ends to suit Standard & Vertex series.  
**Burst pressure:** 63 bar  
**Working pressure @ 20°C:** 300lbf/in<sup>2</sup> (21bar)



Product Number	Length (Meters)	Order Code PCL-259	Price/1 THB
<b><math>\frac{5}{16}</math> Hose, 8mm/<math>\frac{5}{16}</math>" inside diameter Rp<math>\frac{1}{4}</math> swivel ends</b>			
HA2012	5	-3321K	1388.00
HA2017	10	-3321L	1890.00
HA2021	15	-3321M	2363.00
HA2002	20	-3321N	2865.00
<b><math>\frac{3}{8}</math> Hose, 10mm/<math>\frac{3}{8}</math>" inside diameter Rp<math>\frac{1}{4}</math> swivel ends</b>			
HA2043	5	-3325K	1590.00
HA2044	10	-3325L	2295.00
HA2045	15	-3325M	2970.00
HA2046	20	-3325N	3323.00
<b><math>\frac{1}{2}</math> Hose, 13mm/<math>\frac{1}{2}</math>" inside diameter Rp<math>\frac{1}{2}</math> swivel ends</b>			
HA2019	10	-3328L	3825.00
HA2023	15	-3328M	4695.00
HA2004	20	-3328N	5558.00