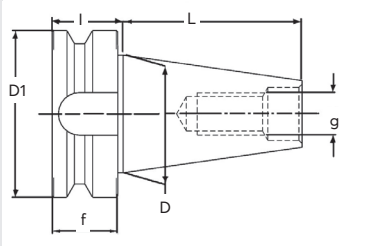


INDEXA-SEIKI

Japanese Standard BT-MAS 403

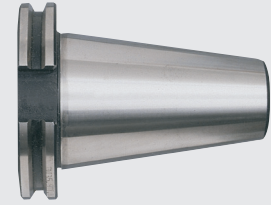
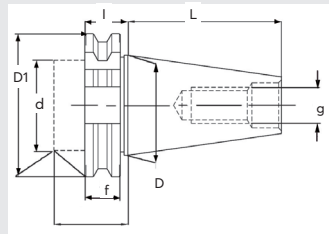
International Standards DIN 69871/A - ISO7388/1 - NFE 62540 Commonly interchangeable with ANSI/Caterpillar Shanks

BT



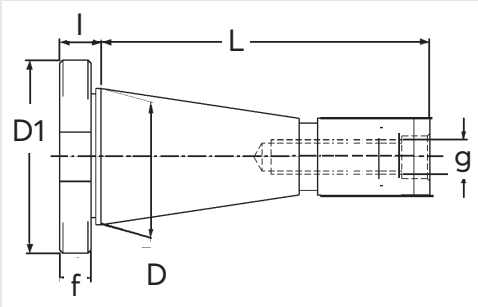
Taper	D	D1	f	g	I	L
30	31.75	46	20	M12	22	48.4
35	38.10	53	22	M12	24	56.5
40	44.45	63	25	M16	27	65.4
45	57.15	85	30	M20	33	82.8
50	69.85	100	35	M24	38	101.8

DIN



Taper	D	D1	d max	f	g	L	I	flmin
30	31.75	50	45	15.9	M12	47.8	19.1	35
40	44.45	63.55	50	15.9	M16	68.4	19.1	35
45	57.15	82.55	63	15.9	M20	82.7	19.1	35
50	69.85	97.5	80	15.9	M24	101.75	19.1	35

ISO Including Quick Change.



ISO Standard ISO R 297-2583 - DIN 2080



ISO

Taper	D	D1	f	g	I	L	L1
30	31.75	50	8	M12	9.61	68.39	-
40	44.45	63	10	M16	11.6	93.40	7
45	57.15	80	12	M20	15.2	106.8	-
50	69.85	97.5	12	M24	15.2	126.8	13

Quick Change

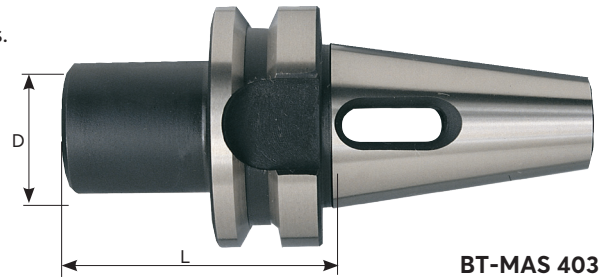
Taper	D	D1	L	f	I	g
30	31.75	46.0	69	8.76	10.7	M12
40	44.45	63.5	93	7.98	9.9	M16

MT - Morse Taper Adaptors

With internal morse taper socket. For use on drilling machines etc.
For drills, core drills, reamers etc. Manufactured to stringent quality standards.

BT = BT-MAS 403.....(See main picture)

QC = ISO/DIN 2080
Quick Change.....



BT-MAS 403

Shank	Morse Taper	L	D	Weight each	Order Code IND-144	Price/1 THB
QC40	2	50	32	882g	-5826K	4883.00
	3	65	40	1008g	-5830K	4883.00
	4	95	48	1304g	-5834K	5765.00

Shank	Morse Taper	L	D	Weight each	Order Code IND-144	Price/1 THB
BT40	2	50	32	1050g	-5926K	6206.00
	3	70	40	1186g	-5930K	6206.00
	4	95	48	1394g	-5934K	6668.00
BT50	3	65	40	3750g	-5974K	8453.00

INDEXA-SEIKI

ER Industrial Hook Wrench

For ER8/ER40 collet nuts. Adjustable size, drop forged steel. Single hand adjustment. One spanner will cover 35 - 105 collet nuts.

To suit collets: ER 8, 16, 25, 32 and 40.
Metric sizes: 35, 50, 60, 70, 80, 90 and 105mm.



Description	Weight each	Order Code IND-140	Price/1 THB
Adjustable	500g	-8100K	2100.00

Spanners & Locknuts

Suitable for all collet chucks including straight shank.

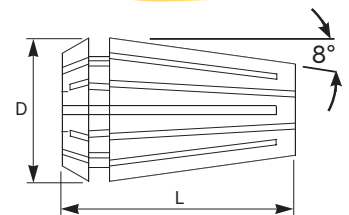
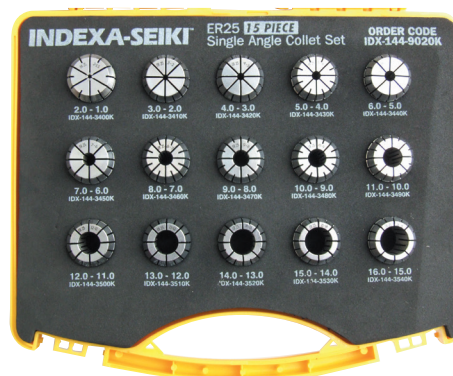


Spanners

Chuck Type	Order Code KEN-580	Price/1 THB
ER16 Mini	-5160K	288.00
ER16	-5300K	306.00
ER25	-5400K	306.00
ER32	-5450K	383.00

ER - Collet Sets

Manufactured from hardened and tempered high alloy steel. All supplied in hard wearing bench cases. Conform to DIN 6499.



Collet Dimensions (mm)

Type	Capacity	D	L	Collet Number	Range of Collets Dia.(mm)	Weight each	Order Code IND-144	Price/1 THB
ER11	1.0-7.0	11.5	18.0	13	1.0 - 7.0	490g	-2898K	9807.00
ER16	0.5-10	17.0	27.0	9	1.0 - 10.0	535g	-9010K	6027.00
ER20	3.0-13	21.0	31.5	11	2.0 - 13.0	637g	-9015K	23027.00
ER25	1.0-16	26.0	35.0	15	1.0 - 16.0	1207g	-9020K	9618.00
ER32	2.0-20	33.0	40.0	18	2.0 - 20.0	4.8kg	-9030K	11886.00
ER40	3.0-26	41.0	46.0					