

**INDEXA Drill Press Vices**

Available in four different jaw widths. For drilling, light milling, vertical and horizontal work. One grooved and one plain replaceable jaw for square and hexagonal shapes across flats or corners, thin strips and discs. Jaws and lead screw are hardened and ground.

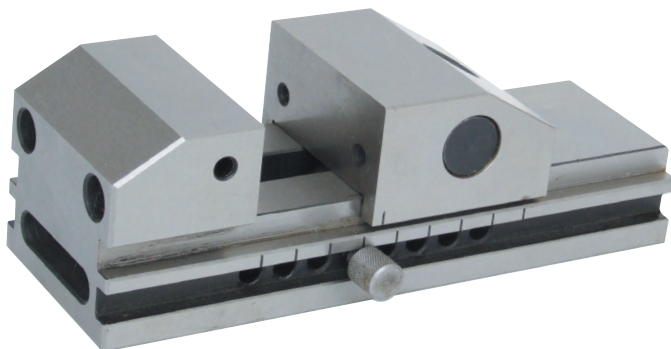


Jaw Width	Jaw Opening	Order Code IND-445	Price/1 THB
85mm	70mm	-0010K	4150.00
100mm	85mm	-0020K	5600.00
120mm	120mm	-0030K	8040.00
150mm	150mm	-0040K	9350.00

**Toolmaker's Vices - Plain Jaw**

Manufactured from high quality alloy steel, case hardened to HRC 58 - 62. For wire cutting, machining, measurement and inspection. With a dowel pin quick release mechanism with linear scale for accurate alignment.

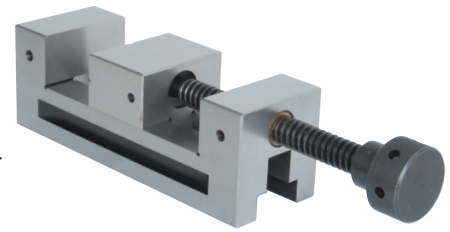
**Accuracy:** 0.003mm.



Jaw Dimensions Width x Opening x Height	Overall Length	Weight each	Order Code IND-445	Price/1 THB
60 x 80 x 28mm	175mm	3.9kg	-0200K	29537.00

**Precision Toolmaker's Vices**

Squareness and parallelism to within **0.003mm**. Designed for precision grinding and many other tool room applications.



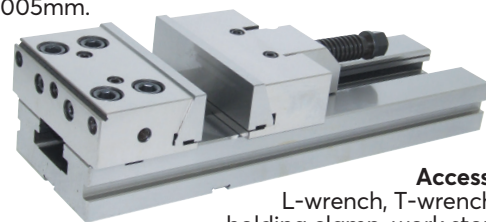
Jaw Dimensions Width x Opening x Height	Overall Length	Weight each	Order Code IND-445	Price/1 THB
73 x 100 x 35mm	205	5.00kg	-0430K	17283.00
100 x 125 x 45mm	255	13.00kg	-0450K	24833.00

**Modular Precision Machine Vices**

Precision modular vices are designed to be used on standard and CNC machines for precision grinding and milling. The vice could be set up individually or work in multiples, on tables or palletised components depending on the machined material dimensions. Made from hardened high grade alloy steel.

**Perpendicular accuracy:** 0.005mm.

**Parallelism:** 0.005mm.

**Accessories:**

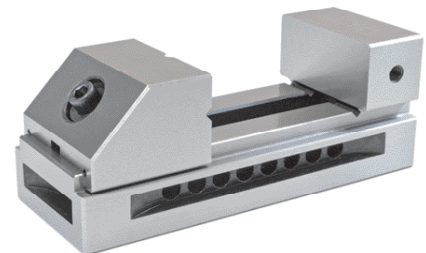
L-wrench, T-wrench, vice holding clamp, work stop with main bolt, positioning key-nuts etc.

Jaw Width x Opening x Height	Overall Length	Clamping Force	Weight each	Order Code IND-445	Price/1 THB
125 x 150 x 40mm	345mm	3000kg	12.70kg	-0620K	67137.00
150 x 200 x 50mm	420mm	5000kg	25.60kg	-0640K	93986.00
150 x 300 x 50mm	520mm	5000kg	29.50kg	-0660K	100706.00

**Toolmaker's Vice - V-Groove Jaw**

Manufactured from high quality alloy steel, case hardened to HRC 58 - 62. With a rack quick release mechanism.

**Accuracy:** 0.003mm.



Jaw Dimensions Width x Opening x Height	Overall Length	Weight each	Order Code IND-445	Price/1 THB
63 x 85 x 32mm	170mm	2.95kg	-0330K	17693.00

**ATLAS WORKHOLDERS Bench Shears**

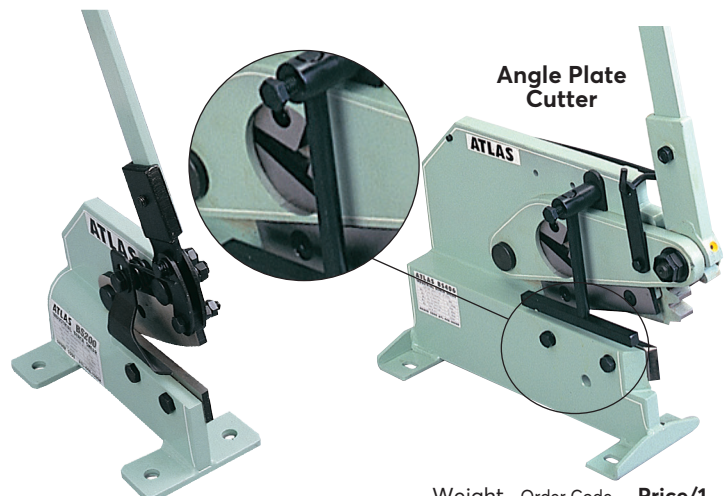
Hand operated, compound lever action bench shears. Capable of rapidly cutting through metal plate, strip and bar. Solid steel frame for rigidity and strength. With hardened and precision ground blades for accurate cutting. Adjustable blade guard.



Group 960



Model Number	Plate (mm)	Angle Plate	Max Strip	Bar (mm)	Jaw Width	Weight each	Order Code ATL-448	Price/1 THB
BS120	4	-	5 x 70	10	120	8.3kg	-1200K	11403.00
BS200	6	-	7 x 70	13	200	20.1kg	-2000K	19467.00
BS406	8	40 x 6	10 x 100	16	200	46.6kg	-3000K	46998.00

**Angle Plate Cutter**

Description	Weight each	Order Code ATL-567	Price/1 THB
Top Blade for ATL-448- 1200K Shear	445g	-3100K	3014.00
Bottom Blade for ATL-448- 1200K Shear	250g	-3110K	1859.00
Top Blade for ATL-448- 2000K Shear	1.4kg	-3150K	8505.00
Bottom Blade for ATL-448- 2000K Shear	790g	-3160K	3875.00
Top Blade for ATL-448- 3000K Shear	430g	-3200K	2709.00
Bottom Blade for ATL-448- 3000K Shear	220g	-3210K	3875.00