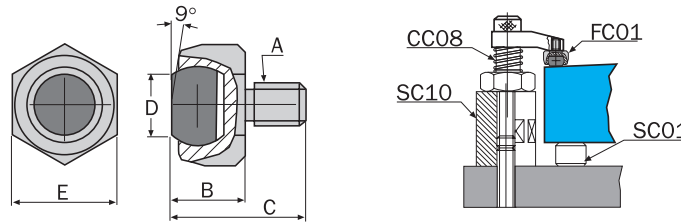


INDEXA FC01 - Plain Ball End

Precision swivel ball that can be used either as a contact bolt or rest pad. As contact pads these swivel ball units are ideal for evenly distributing clamping pressure on sloped or uneven surfaces.



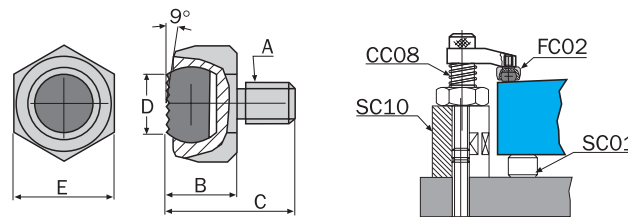
Material:
Body - Medium Carbon Steel.
Ball - Through Hardened Steel
EN 31.
Hardness:
Bolt - HRC 35.
Ball - HRC 62.
Surface finish:
Black Oxide.



Product Number	Thread A	Dimensions (mm)					Weight each	Order Code	Price/1 THB
		B	C	D	E				
FC010216	M16 x 2.00	26	42	14	27	0.14kg	IND-425 -2010R	1775.00	

FC02 - Serrated Ball End

Precision swivel ball that can be used either as a contact bolt or rest pad. As contact pads these swivel ball units are ideal for evenly distributing clamping pressure on sloped or uneven surfaces.

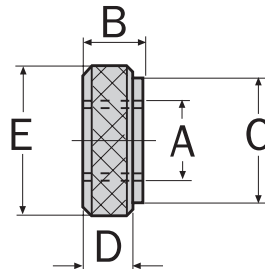


Material:
Body - Medium Carbon Steel.
Ball - Through Hardened Steel
EN 31.
Hardness:
Bolt - HRC 35.
Ball - HRC 62.
Surface finish:
Black Oxide.



Product Number	Thread A	Dimensions (mm)					Weight each	Order Code	Price/1 THB
		B	C	D	E				
FC010112	M12 x 1.75	22	35	12	22	0.070kg	IND-425 -2015J	1775.00	
FC010216	M16 x 2.00	26	42	14	27	0.14kg	IND-425 -2015R	2426.00	

FC03 - Knurled Nut

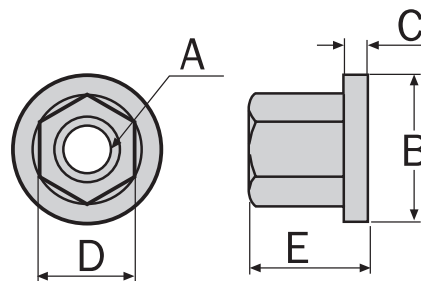


Material: Medium Carbon Steel.
Hardness: HRC 30 - 35.
Surface finish: Black Oxide.



Product Number	Thread A	Dimensions (mm)					Weight each	Order Code	Price/1 THB
		B	C	D	E				
FC030210	M10	10	20	8	25	0.030kg	IND-425 -2020K	390.00	
FC030416	M16	12	25	10	30	0.045kg	IND-425 -2020R	525.00	

FC04 - Flanged Nut



Material: Medium Carbon Steel.
Hardness: HRC 30 - 35.
Surface finish: Black Oxide.



Product Number	Thread A	Dimensions (mm)					Weight each	Order Code	Price/1 THB
		B	C	D	E				
FC040110	M10	22	3	17	13	0.020kg	IND-425 -2025G	180.00	
FC040212	M12	28	4	19	17	0.040kg	IND-425 -2025K	187.00	
FC040214	M14	28	4	22	17	0.040kg	IND-425 -2025M	207.00	
FC040316	M16	33	5	24	20	0.060kg	IND-425 -2025P	229.00	
FC040420	M20	40	6	30	25	0.110kg	IND-425 -2025T	420.00	