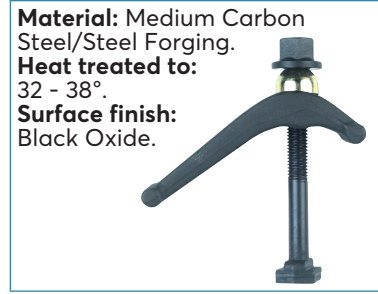
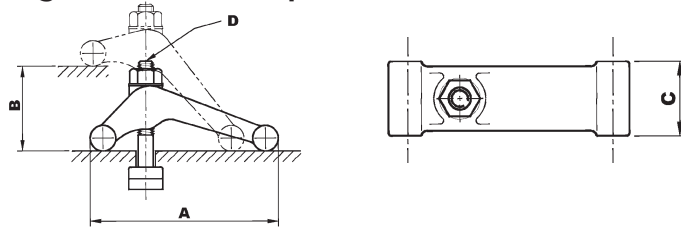


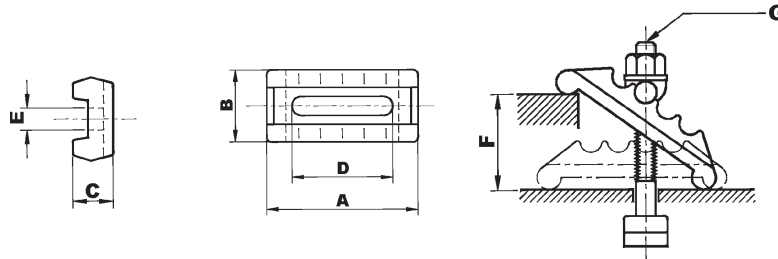
INDEXA CC20 - Forged Swivel Clamp



Product Number	Length x Width A x B	Dimensions (mm)		Weight each
		C	D	
CC20-NC6	150 x 85mm	52	M16-150	2.42kg
CC20-NC8	194 x 105mm	58	M20-175	4.50kg

Order Code	Price/1 THB
IND-425	
-1090M	4274.00
-1090T	5975.00

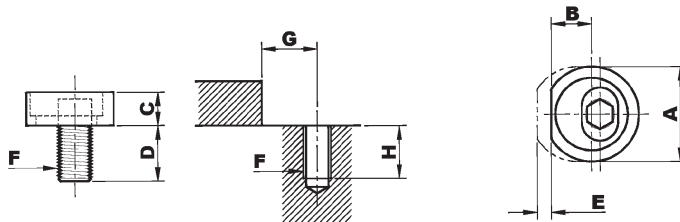
CC21 - Swivel Rack Clamp



Product Number	Length x Width A x B	Dimensions (mm)					Weight each
		C	D	E	F	G	
CC21-0216	125 x 56mm	33	84	18	65	M16	2.10kg

Order Code	Price/1 THB
IND-425	
-1095M	4232.00

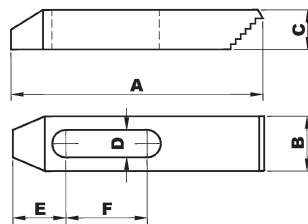
CC24 - Eccentric Cam Lock



Product Number	Dimensions (mm)								Weight each
	A	B	C	D	E	F	G	H	
CC240210	26	11.8	8	14.3	4	M10	12.5	22	.03kg
CC240312	30	13.5	9	19	5	M12	14.5	22	.06kg
CC240416	38	16.0	12	23	6	M16	17.5	26	.12kg

Order Code	Price/1 THB
IND-425	
-1110C	1176.00
-1110G	1292.00
-1110P	1533.00

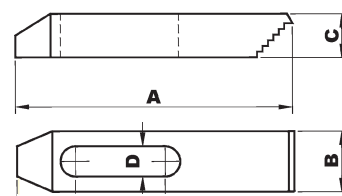
CC25 - Step Clamp



Product Number	Length x Width A x B	Dimensions (mm)					To Suit Stud Size	Weight each
		C	D	E	F			
CC251463	63 x 25mm	13	15	20	14	M14	0.12kg	
CC2514100	100 x 32mm	19	15	29	34	M14	0.38kg	
CC2514150	150 x 32mm	22	15	32	50	M14	0.68kg	
CC2516100	100 x 32mm	19	17	31	26	M16	0.42kg	
CC2516150	150 x 30mm	22	17	40	47	M16	0.72kg	

Order Code	Price/1 THB
IND-425	
-1130C	599.00
-1130G	819.00
-1130J	956.00
-1135G	714.00
-1135J	1134.00

ATLAS WORKHOLDERS Step Clamp



Product Number	To Suit Stud Size	Dimensions (mm)			Order Code ATL-425	Price/1 THB	Product Number	To Suit Stud Size	Dimensions (mm)			Order Code ATL-425	Price/1 THB
		A x B	C	D					A x B	C	D		
SC105222	M10/3/8" UNC	55 x 25	12	13	-2020K	341.00	SC146428	M14	64 x 28	12	15	-2220K	714.00
SC108825		88 x 25	16	11	-2040K	504.00	SC1410035		100 x 35	19	15	-2240K	662.00
SC1012828		128 x 28	19	11	-2060K	651.00	SC1415032		150 x 32	22	15	-2260K	714.00
SC126428	M12/1/2" UNC	64 x 28	12	13	-2120K	341.00	SC166432	M16/5/8" UNC	64 x 32	12	17	-2420K	364.00
SC1210032		100 x 32	19	13	-2140K	504.00	SC1610038		100 x 38	20	17	-2440K	651.00
SC1215032		150 x 32	22	13	-2160K	714.00	SC1615038		150 x 38	22	17	-2460K	809.00