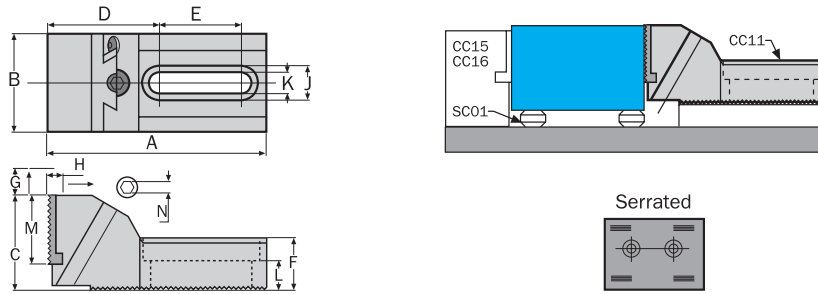


## INDEXA CC11 - Free Vice Jaw

Clamping force in two directions, with serrated jaws for holding large or irregular shapes.



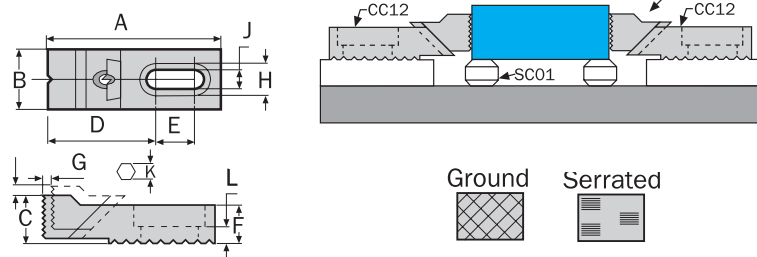
**Material:** Body: Grey Cast Iron.  
Jaw: Medium Carbon Steel EN8D.  
**Hardness:** Jaw Only: HRC 45 - 48.  
**Surface finish:** Jaw: Black Oxide.



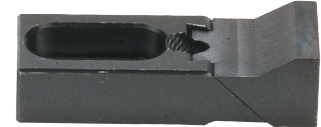
| Product Number | Type     | Length x Width<br>A x B | Dimensions (mm) |    |    |    |    |   |    |    |      |    | Weight each | Order Code<br>IND-425 | Price/1 THB |          |
|----------------|----------|-------------------------|-----------------|----|----|----|----|---|----|----|------|----|-------------|-----------------------|-------------|----------|
|                |          |                         | C               | D  | E  | F  | G  | H | J  | K  | L    | M  |             |                       |             | N        |
| CC110112       | Serrated | 133 x 60mm              | 54.5            | 68 | 50 | 32 | 16 | 6 | 22 | 13 | 16.8 | 42 | 10          | 2.0kg                 | -1045D      | 15467.00 |

## CC12 - Adjustable Clamp

Low profile clamp that keeps top surfaces clear for machining. Ideal for rough or finished parts.



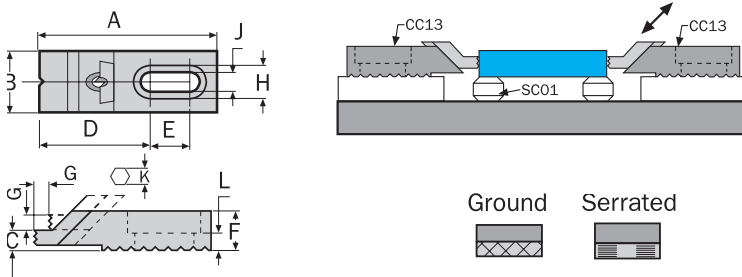
**Material:** Medium Carbon Steel.  
**Hardness:** Jaw Only: HRC 38.  
**Surface finish:** Black Oxide.  
**Jaws:** Surface treated with high frequency quenching.



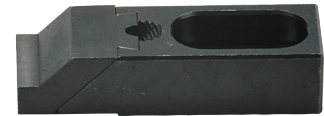
| Product Number | Type     | Length x Width x Height<br>A x B x C | Dimensions (mm) |      |    |    |    |      |   |    |        |        | Weight each | Order Code<br>IND-425 | Price/1 THB |
|----------------|----------|--------------------------------------|-----------------|------|----|----|----|------|---|----|--------|--------|-------------|-----------------------|-------------|
|                |          |                                      | D               | E    | F  | G  | H  | J    | K | L  |        |        |             |                       |             |
| CC120108       | Serrated | 73.45 x 25 x 18mm                    | 46.95           | 16.5 | 16 | 7  | 14 | 8.5  | 4 | 7  | 0.18kg | -1050D | 4841.00     |                       |             |
| CC120212       |          | 106.64 x 35 x 27.5mm                 | 62.14           | 30.0 | 22 | 12 | 20 | 13.5 | 6 | 9  | 0.52kg | -1050F | 5775.00     |                       |             |
| CC120316       |          | 134.64 x 40 x 37.5mm                 | 82.14           | 35.0 | 30 | 14 | 26 | 17.0 | 8 | 13 | 1.02kg | -1050H | 7329.00     |                       |             |
| CC120408       | Ground   | 72.00 x 25 x 20.0mm                  | 45.00           | 16.0 | 16 | 7  | 14 | 8.5  | 4 | 7  | 0.16kg | -1050J | 4694.00     |                       |             |
| CC120512       |          | 104.64 x 35 x 27.5mm                 | 62.14           | 30.0 | 22 | 12 | 20 | 13.5 | 6 | 9  | 0.52kg | -1050M | 5492.00     |                       |             |
| CC120616       |          | 134.64 x 40 x 37.5mm                 | 82.14           | 35.0 | 30 | 14 | 26 | 17.0 | 8 | 13 | 1.02kg | -1050R | 9335.00     |                       |             |

## CC13 - Adjustable Stepped Clamp

Low profile clamp for holding thin parts and keeping top surfaces clear for machining.

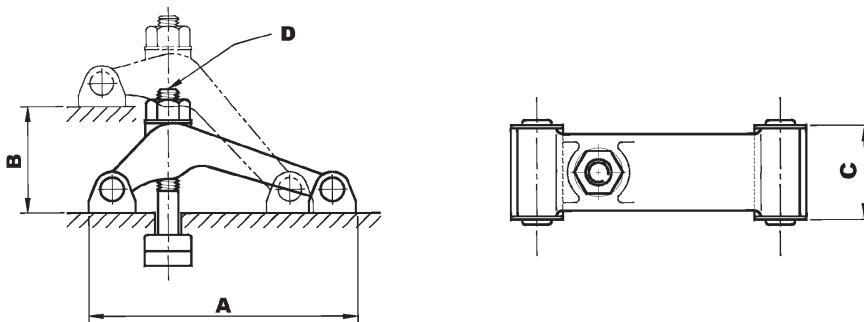


**Material:** Medium Carbon Steel.  
**Heat treated to:** HRC 38.  
**Surface finish:** Black Oxide.  
**Jaws:** Surface treated with high frequency quenching.



| Product Number | Type     | Length x Width x Height<br>A x B x C | Dimensions (mm) |      |      |    |    |      |   |    |        |        | Weight each | Order Code<br>IND-425 | Price/1 THB |
|----------------|----------|--------------------------------------|-----------------|------|------|----|----|------|---|----|--------|--------|-------------|-----------------------|-------------|
|                |          |                                      | D               | E    | F    | G  | H  | J    | K | L  |        |        |             |                       |             |
| CC130108       | Serrated | 73.45 x 25 x 18mm                    | 46.95           | 16.5 | 16.5 | 7  | 14 | 8.5  | 5 | 7  | 0.18kg | -1055D | 7046.00     |                       |             |
| CC130212       |          | 106.64 x 35 x 27.5mm                 | 64.14           | 30.0 | 22.0 | 12 | 20 | 13.5 | 6 | 9  | 0.52kg | -1055F | 5691.00     |                       |             |
| CC130316       | Ground   | 133.14 x 40 x 14mm                   | 90.00           | 30.0 | 30.0 | 14 | 26 | 17.0 | 8 | 13 | 0.85kg | -1055H | 6699.00     |                       |             |

## CC19 - Forged Swivel Clamp



**Material:** Medium Carbon Steel/Steel Forging.  
**Heat treated to:** 32 - 38°.  
**Surface finish:** Black Oxide.



| Product Number | Length x Width<br>A x B | Dimensions (mm) |         | Weight each | Order Code<br>IND-425 | Price/1 THB |
|----------------|-------------------------|-----------------|---------|-------------|-----------------------|-------------|
|                |                         | C               | D       |             |                       |             |
| CC19-NC50      | 131 x 75mm              | 46.5            | M12-125 | 1.50kg      | -1085D                | 5838.00     |