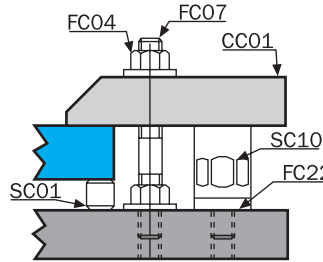
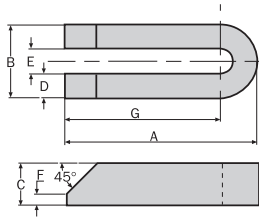


INDEXA CC01 - U-Clamp

Open end permits quick and easy installation.



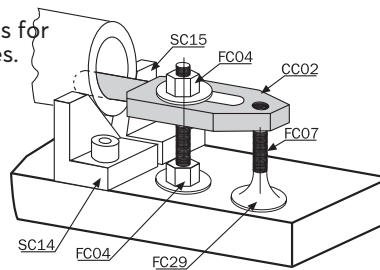
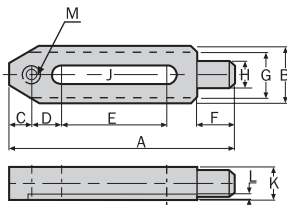
Material: Medium Carbon Steel.
Heat treated to: HRC 32 - 38.
Surface finish: Black Oxide.



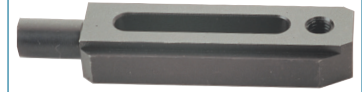
Product Number	Length x Width A x B	Dimensions (mm)					Weight each	Order Code IND-425	Price/1 THB
		C	D	E	F	G			
CC010112	100 x 38mm	22	12.5	13	6	81	0.41kg	-1005D	1019.00
CC010316	150 x 50mm	30	16.5	17	8	125	1.10kg	-1005J	1775.00
CC010420	200 x 60mm	35	19.5	21	10	170	2.10kg	-1005M	4421.00

CC02 - Bore Clamp

The cylindrical pin minimises the contact area. This clamp is for clamping inside horizontal bores and onto concave surfaces.



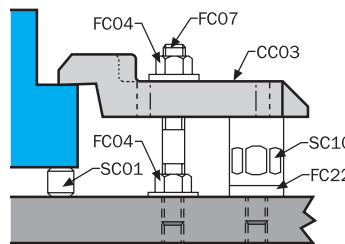
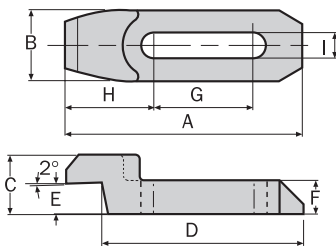
Material: Medium Carbon Steel.
Heat treated to: HR C32 - 38.
Surface finish: Black Oxide.



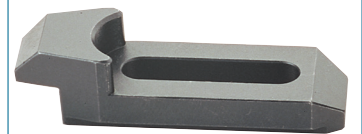
Product Number	Length x Width A x B	Dimensions (mm)										Weight each	Order Code IND-425	Price/1 THB
		C	D	E	F	G	H	J	K	L	M			
CC020112	150 x 38mm	15	20	70	25	30	18	13	22	4	M12	0.58kg	-1010D	1502.00
CC020216	150 x 48mm	20	25	40	35	40	24	17	32	5	M16	1.12kg	-1010G	1880.00

CC03 - Swan Necked Clamp

Low profile design helps eliminate cutter interference.



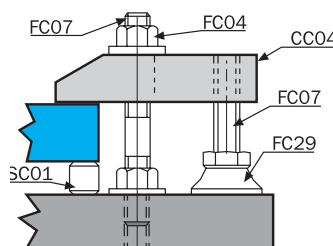
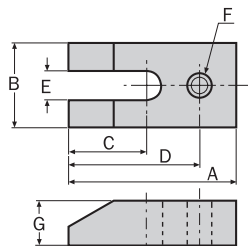
Material: Medium Carbon Steel.
Heat treated to: HRC 32 - 38.
Surface finish: Black Oxide.



Product Number	Length x Width A x B	Dimensions (mm)							Weight each	Order Code IND-425	Price/1 THB
		C	D	E	F	G	H	I			
CC030112	120 x 36mm	30	102	16	17	50	45	13	0.49kg	-1015H	2142.00
CC030216	150 x 48mm	48	130	25	25	55	60	17	1.30kg	-1015K	3066.00
CC030320	175 x 60mm	60	150	30	30	65	70	21	2.26kg	-1015N	4757.00

CC04 - Tapped End U-Clamp

Open end design permits easy assembly.



Material: Medium Carbon Steel.
Heat treated to: HRC 32 - 38.
Surface finish: Black Oxide.



Product Number	Length x Width A x B	Dimensions (mm)					Weight each	Order Code IND-425	Price/1 THB
		C	D	E	F	G			
CC040616	150 x 50mm	95	130	17	M16	25	1.50kg	-1020R	2604.00