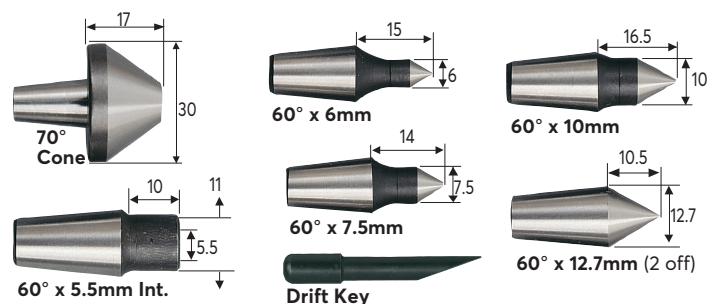


Standard Duty Interchangeable Revolving Centre Sets

Manufactured from high alloy steel, precision ground internally and externally with pre-lubricated bearings. A versatile revolving centre with interchangeable points for a wide variety of applications. Ideal for toolroom or manufacture of small turned components. Points fit into body by means of a taper and are removed by use of the drift key supplied. All mating surfaces are precision ground and the set is supplied in a varnished wooden storage box.

Morse Taper	Axial Load at 100rpm	Radial Load at 100rpm	Max rpm	Max Runout
No. 2	200Kgf	100Kgf	4000	0.005mm
No. 3	400Kgf	200Kgf	3000	0.005mm



Morse Taper	Length (mm)	Diameter (mm)	Weight each	Order Code KEN-488	Price/1 THB
No.2	124	33	0.85kg	-1320K	20234.00
No.3	152	42	1.10kg	-1330K	18921.00

Replacement Interchangeable Points

A complete range of interchangeable points to complement the revolving centre sets.

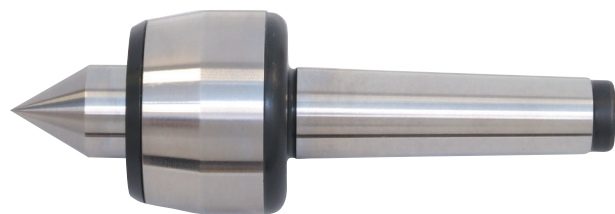
Description	Weight each	Order Code KEN-489	Price/1 THB
60° Point x 6mm Dia.	20g	-1020K	2258.00
60° Point x 7.5mm Dia.	20g	-1030K	2258.00
60° Point x 10mm Dia.	25g	-1040K	851.00
60° Point x 12.7mm Dia.	20g	-1050K	977.00



Standard Duty Revolving Centres

Manufactured from high alloy steel hardened and tempered then precision ground externally. Precision bearings are fitted as standard and the centres have a 60° point.

Maximum runout: 0.005mm.



Morse Taper	Max rpm	Radial Load (rpm) @100 (kgf)	Radial Load (rpm) @max (kgf)	Axial Load (rpm) @100 (kgf)	Axial Load (rpm) @3000 (kgf)	Weight each	Order Code ATL-488	Price/1 THB
No.2	7000	200	50	250	50	0.50kg	-1020K	5975.00
No.3	6000	300	80	380	90	0.80kg	-1030K	5156.00
No.4	5000	800	220	900	270	2.30kg	-1040K	6216.00

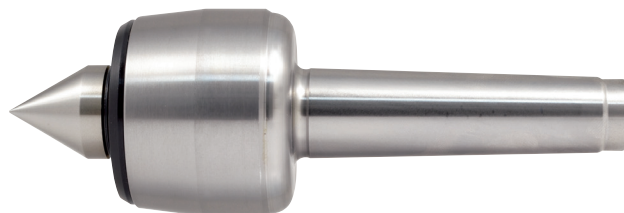
INDEXA Heavy Duty Revolving Centres

Manufactured from high alloy steel, heat treated and precision ground. Fitted with heavy duty precision taper roller and thrust bearings to support both radial and axial loads. The 60° point is ground after assembly for absolute concentricity. Designed for heavy load and high production applications where durability is the main criteria. Mounting Tapers are accurate to **DIN228** Form A, Tolerance Class AT5.

Maximum runout:

No.2 to 5 taper: 0.005mm.

No.6 taper: 0.010mm.



Morse Taper	Max rpm	Radial Load (rpm) @100 (kgf)	Radial Load (rpm) @max (kgf)	Axial Load (rpm) @100 (kgf)	Axial Load (rpm) @3000 (kgf)	Weight each	Order Code IND-488	Price/1 THB
No.1	5000	35	10	190	50	0.25kg	-2010K	6857.00
No.2	5000	85	20	350	100	0.35kg	-2020K	11424.00
No.3	4000	175	50	700	200	0.92kg	-2030K	11750.00
No.4	3000	350	125	700	200	1.45kg	-2040K	16317.00
No.5	2500	800	350	1200	500 ⁽¹⁾	3.55kg	-2050K	21546.00
No.7	1000	3500	2000	4500	1800 ⁽³⁾	22.80kg	-2070K	NA

⁽¹⁾@2500rpm; ⁽²⁾@2000rpm; ⁽³⁾@1000rpm



Standard Duty Revolving Centres

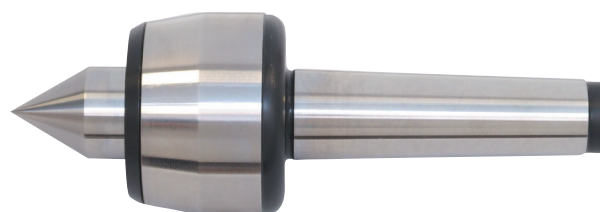
Manufactured from high alloy steel hardened and tempered then precision ground externally. Precision bearings are fitted as standard and the centres have a 60° point.

Mounting Tapers are accurate to **DIN228** Form A, Tolerance Class AT5.

Maximum runout:

No.1 to 4 taper: 0.005mm.

No.5 to 6 taper: 0.010mm.



Morse Taper	Max rpm	Radial Load (rpm) @100 (kgf)	Radial Load (rpm) @max (kgf)	Axial Load (rpm) @100 (kgf)	Axial Load (rpm) @3000 (kgf)	Weight each	Order Code KEN-488	Price/1 THB
No.1	7000	80	32	250	50	0.37kg	-1010K	4263.00
No.2	7000	200	55	275	60	0.43kg	-1020K	6962.00
No.3	6000	300	70	400	70	0.67kg	-1030K	8117.00
No.4	5000	600	75	500	125	1.23kg	-1040K	11214.00
No.5	4000	800	280	570	230	3.00kg	-1050K	16233.00

Industrial Solid Centres

Manufactured from high quality tool steel, hardened and ground with 60° point and spanner flats as standard. Mounting Tapers are accurate to **DIN228** Form A, Tolerance Class AT5.



Morse Taper	Diameter (mm)	Across Flats	Length (mm)	Weight each	Order Code KEN-487	Price/1 THB
No.1	12.20	10	78	60g	-1010K	420.00
No.2	18.00	13	90	200g	-1020K	357.00
No.3	24.10	19	138	300g	-1030K	767.00
No.4	31.60	24	138	450g	-1040K	1292.00